

New Year Greetings

The Chelsea Standard

WEATHER

	Min.	Max.	Precep.
day, Dec. 20	33	35	0.02
Dec. 21	33	36	Trace
Dec. 22	35	38	Trace
Dec. 23	31	37	Trace
Dec. 24	33	37	0.01
Dec. 25	33	38	Trace
Dec. 26	30	34	0.11

By H.K.L.

HUNDRED-THIRD YEAR—No. 28

16 Pages This Week

CHELSEA, MICHIGAN, THURSDAY, DECEMBER 28, 1972

15c per copy

SUBSCRIPTION: \$4.00 PER YEAR

QUOTE

"A child's education should begin at least 100 years before he is born."
—Oliver W. Holmes

Labor Relations Hold Key to U.S. Economic Progress During 1973

By Babson's Reports, Inc.

The forecast a year ago was laced with reasons for optimism regarding economic and social prospects for 1972. In retrospect, our two key predictions proved to be correct.

On the economic front we envisioned the emergence of a more positive attitude on the part of businessmen and consumers that would speed up the economic recovery.

On the financial front we projected a good year for the stock market in 1972, and indicated that the Dow Jones Industrial Average would pierce the 1,000 mark in either late summer or early fall.

Home Free in '73
1972 turned out to be a year of almost unbroken economic and business progress. The public might

well have been more keenly aware of this healthy environment had it not been for the politically motivated rhetoric on some of the less-than-Utopian aspects of the business picture.

The most facile means of forecasting is, of course, simply to take prevailing conditions and project them into the future, even though this is not necessarily the most logical or accurate way.

Such an approach is commonly used among laymen, and often even by those more knowledgeable in business affairs. Little wonder, then, that just as optimists were conspicuous by their absence a year ago, most forecasters of 1973 business up to this point reflect today's enthusiasm and happy anticipation.

Pockets of Potential Trouble

The staff of Babson's Reports once again stands somewhat apart from the herd and takes a more moderate view of developments over the next 12 months. Our opinion is far from pessimistic, but it does incorporate a healthy respect for some of the vital problems which the nation's economy may have to face in the new year. Hence, readers of this Babson Forecast are advised to be psychologically prepared to cope with possible disruptions of varying intensity along the labor front, on the monetary scene, in the fight against inflation, and in areas of high sociological sensitivity.

Strike Threat

A year from now, we may look back and credit labor relation with having molded the profile of 1973's business pattern. Whether the nation is to suffer an inordinate degree of economic dislocation during the coming twelve months could depend to a considerable extent on just how aggressively and persistently labor leaders press their demands, and also on how the Administration handles the labor issues in its effort to stave off serious longterm injury to the economy from further ravages of inflation.

While the Babson staff is hopeful that the over-all damage will not be excessive, there are bound to be a number of conflicts which will jar business and public confidence for a while.

Labor management confrontations will start at the crack of the new year and, except for brief respite, will remain on scene throughout 1973. It is estimated that more than 4,000,000 workers in a fistful of key industries will become involved in new labor contract negotiations.

First at bat are the United Rubber Workers who are already facing the petrochemical companies to hammer out a labor pact to re-

Wrestlers Score Well in Ann Arbor Novice Tourney

Chelsea wrestlers were in action in last week following the loss of two dual meets and the Mason-Township Tournament to bad weather.

Chelsea grapplers competed in a double dual meet at Jackson, Mich., a single dual meet at Tecumseh, and the Novice tournament in Ann Arbor.

Chelsea suffered its first loss the season when they fell to a high Michigan Center team, 25-10.

Chelsea wrestlers did a good job but the meet was lost at the very end.

9-pounder Dale Schoenberg scored a fall victory in 3:40. Nick Klink, 105 pounds, lost in a fall. Mark Montagne, 112 pounds, gained a fall victory in 3:30. John Herman, 119 pounds, took a 10-5 decision. Dale Poertner, 126 pounds, scored a 6-4 decision win.

Proctor, 132 pounds, lost a decision. John Tandy, 138 pounds, lost a 7-2 decision, while in Lancaster, 145 pounds, won a decision.

Ken Keiser, 155 pounds, was defeated 14-3. Darryl West, 167 pounds, won a 4-3 decision. Don Hinger, 185 pounds, was defeated by a 1-11 decision.

Heavyweight Steve Worden took a decision, 3-0. Montagne scored a fall victory in 1:56. Tandy, 145, took a fall victory. Tim Lancaster scored a fall victory in 35 seconds, while Worden scored a fall victory in 2:40. Steve Worden pinned his man in 1:24. Doug Reed, 138 pounds, won a 10-3 decision.

Schoenberg, 98 pounds, lost a decision. Nick Keiser lost a decision. Beeman, 119 pounds, lost a 10-3 decision.

Chelsea lost a 10-9 decision. Steve Worden lost a 6-4 decision. Proctor, 132 pounds, lost a 10-3 decision. Don Boiling, 185 pounds, suffered a fall loss.

Coach Bareis, summing up the match, said that although Chelsea won, the wrestlers looked rusty and needed more work.

Chelsea then faced Tecumseh Dec. 21 and again Chelsea came from behind to win, 33-25.

Montagne scored a fall victory in 2:56, as did Proctor.

Lancaster, 145 pounds, won a forfeit. West, 155, took a 7-5 decision. Greg McClain scored a fall victory in 1:06, while Worden scored a fall victory in 1:14.

Steve Klink, 98 pounds, was pinned, as was Keiser, 105. Beeman, 119 pounds, was defeated, 11-2. Mike Agopian, 132 pounds, was defeated 7-4. Keiser, 167 pounds, was beaten 18-0.

Although Chelsea wrestlers did not look especially good in their victory, Coach Bareis was quick to point out that the heavier weights came through when they were needed.

Chelsea was represented by 15 entries in Ann Arbor's Novice Tournament Dec. 21 and 22. The tournament was split into freshmen and upper class divisions, with six Chelsea freshmen claiming medals.

Dale Schoenberg won the first novice championship ever taken by a Chelsea wrestler. Schoenberg walked away with the 98-pound crown after defeating an Ann Arbor Pioneer wrestler, 9-6, in the finals.

Kelly Webb, in his first time ever on the mat, fought his way

(Continued on page eight)



WHAT BETTER CHRISTMAS TREE than a 50-foot pine? That's what the James Lorenz family, 118 Wilkinson, thought, so they decorated the giant pine which stands in their side yard. The tree has candy canes, huge plaster Christmas balls and lights. That's Douglas Lorenz in the lower right, dwarfed by the tree.

Recreation Council Plans Winter Classes

A variety of sports activities will be offered by the Chelsea Recreation Council in spring, 1973.

Gymnastics classes for girls will be offered beginning Jan. 6. Two classes will meet on Saturdays. The first class will be for girls in grades three through six.

This class will meet from 10 a.m. to noon at Beach school. The second class will be for girls in grades 7 through 12 and will meet from 12:30 to 2:30 p.m. at Beach school.

Instructors this year are Bonnie Kissam and Susan Ross. Miss Kissam has three years of teaching experience in gymnastics and is presently a graduate student at the University of Michigan. Miss Ross has four years of teaching experience in dance and gymnastics. She is also a graduate student at the U. of M.

The Recreation Council feels that there is a need for a strong gymnastics program in Chelsea. Such a program would offer children the opportunities to develop strength, flexibility and body control through gymnastically-oriented exercises.

The activities emphasized will be tumbling (floor exercise), balance beam, uneven parallel bars, and vaulting. Group work and individual routines will also be encouraged since the ability to create is a recognized value in the sport of gymnastics.

Boys basketball will be offered every Saturday morning at the high school beginning Jan. 6. Students in grades three through six may play.

Martin Tobin, Oren Wireman and Pat Wade will introduce the boys to the fundamentals of basketball, including dribbling, passing, shooting, and team play. There will also be an opportunity for some of the boys to perform at half-time of a Chelsea varsity game.

Classes will be held from 10 a.m. to noon. Interested boys should report to the high school gym at 10 a.m. Jan. 6.

Golf lessons will be offered at Beach school every Monday beginning Jan. 8. Two classes will be offered, one from 6 to 7:30 p.m. and the second from 7:30 to 9 p.m. (Continued on page eight)

Four Area Churches Join in Key 73 Program

Evangelism is on the move. It has found a new integrity, a new enthusiasm, and a bold new thrust.

Four local churches are participating in what is to be the biggest co-operative evangelism project in the history of the Christian church—Key 73.

The churches, St. John Lutheran of Bridgewater, St. Thomas Lutheran on Ellsworth Rd., Zion Lutheran on S. Fletcher Rd., and Bethel United Church of Christ on Bethel Church Rd., have joined with most of the denominations and Christian groups in the United States and Canada on the project.

Key 73 is a voluntary movement of more than 140 denominations and Christian groups co-operating in a massive attempt to reach every person in North America with the Gospel of Jesus Christ during 1973.

In Key 73, Christians will be working together to share Christ with millions of persons. This effort will include concurrent Bible studies in a million Christian homes; continent-wide radio and TV events linking hundreds of thousands of participating small groups; massive lay witnessing programs; coast-to-coast mass media evangelism; creative re-

sources for implementing local church programs; and thousands of area-wide evangelistic endeavors.

Key 73 includes six phases, beginning in late 1972 and continuing through the entire year of 1973.

Phase 1 calls our continent to repentance and prayer at the beginning of the year-long evangelism thrust.

Phase 2 emphasizes the Holy Bible as the Word of God, and features a plan to put a Luke-Acts scripture portion in every home in North America.

Phase 3 focuses on intense periods of lay ministry primarily during Lent 1973.

Phase 4, during the summer months, calls for creative evangelism to bring our continent to new life.

Phase 5 offers plans to lift up the preached word in new ways and new places.

And, Phase 6 draws 1973 to a close and points to the future by emphasizing the commitment of all Christians to faithful discipleship.

The Noon Prayer Call is the first high-visibility event in Key 73. It has been planned to focus an entire continent's attention and (Continued on page eight)

1972 Events in Review

January . . .

1—Beach Junior High school was burglarized.

3—March of Dimes campaign for 1972 was underway.

6—Weinberg Dairy was bought by the Hickory Ridge Farm Dairy of Stockbridge. Owner Jay Weinberg retired after 50 years.

8—Frank and Myrtle Abdon marked their 70th wedding anniversary.

8—Chelsea High novice debaters won the State Championship Tournament.

10—Navy Lt. James D. Maynard, son of Mr. and Mrs. Devere C. Maynard of North Lake, received three awards for heroism and meritorious service in Vietnam.

15—Doug Van Gorder and Tom Hubert, members of the Chelsea High school band, won spots in the Lansing All-Star Band.

15—Chelsea varsity wrestlers won the South Lyon invitational tournament championship.

18—Mrs. Dorothy Miller, became the first woman in the history of the Chelsea Jaycees to receive the Distinguished Citizen Award.

21—Chelsea Bulldogs basketball team defeated Milan and Dexter.

25—Gen. Dwight Beach and Robert L. Daniels were elected directors of the Chelsea State Bank.

26—A group was formed to oppose the Metro Park proposal.

27—U. S. Air Force Major Robert L. Toney, son of Mrs. Mary Haselschwardt, Chelsea, received the Bronze Star for meritorious service in Vietnam.

28—Chelsea Fire Department reported the number of calls was up 50 percent over last year, but the damage was down.

13—Chelsea Girl Scouts celebrated the 60th year of scouting with a father-daughter banquet.

16—Phil Bareis, head football coach at Chelsea High, was named Coach of the Year by the Jackson Area Coaches Association.

16—Chelsea Fire Department reported the number of calls was up 50 percent over last year, but the damage was down.

17—Terry D. Eisemann was named Chelsea High's Betty Crocker Homemaking of Tomorrow for 1972.

17—Jeanne Haselschwardt, a student at Chelsea High, won the DAR Good Citizen award for 1972.

17—A master plan was being formed for the future development of the Waterloo Recreation Area.

19—Chelsea High debate team placed second in a state tournament.

29—Bulldog cagers lost to Pinckney in district play.

29—Bulldog cagers lost to Pinckney in district play.

29—Bulldog cagers lost to Pinckney in district play.

29—Bulldog cagers lost to Pinckney in district play.

29—Bulldog cagers lost to Pinckney in district play.

29—Bulldog cagers lost to Pinckney in district play.

29—Bulldog cagers lost to Pinckney in district play.

29—Bulldog cagers lost to Pinckney in district play.

29—Bulldog cagers lost to Pinckney in district play.

29—Bulldog cagers lost to Pinckney in district play.

29—Bulldog cagers lost to Pinckney in district play.

29—Bulldog cagers lost to Pinckney in district play.

29—Bulldog cagers lost to Pinckney in district play.

29—Bulldog cagers lost to Pinckney in district play.

13—Chelsea Girl Scouts celebrated the 60th year of scouting with a father-daughter banquet.

16—Phil Bareis, head football coach at Chelsea High, was named Coach of the Year by the Jackson Area Coaches Association.

16—Chelsea Fire Department reported the number of calls was up 50 percent over last year, but the damage was down.

17—Terry D. Eisemann was named Chelsea High's Betty Crocker Homemaking of Tomorrow for 1972.

17—Jeanne Haselschwardt, a student at Chelsea High, won the DAR Good Citizen award for 1972.

17—A master plan was being formed for the future development of the Waterloo Recreation Area.

19—Chelsea High debate team placed second in a state tournament.

29—Bulldog cagers lost to Pinckney in district play.

29—Bulldog cagers lost to Pinckney in district play.

29—Bulldog cagers lost to Pinckney in district play.

29—Bulldog cagers lost to Pinckney in district play.

29—Bulldog cagers lost to Pinckney in district play.

29—Bulldog cagers lost to Pinckney in district play.

29—Bulldog cagers lost to Pinckney in district play.

29—Bulldog cagers lost to Pinckney in district play.

29—Bulldog cagers lost to Pinckney in district play.

29—Bulldog cagers lost to Pinckney in district play.

29—Bulldog cagers lost to Pinckney in district play.

29—Bulldog cagers lost to Pinckney in district play.

13—Chelsea Girl Scouts celebrated the 60th year of scouting with a father-daughter banquet.

16—Phil Bareis, head football coach at Chelsea High, was named Coach of the Year by the Jackson Area Coaches Association.

16—Chelsea Fire Department reported the number of calls was up 50 percent over last year, but the damage was down.

17—Terry D. Eisemann was named Chelsea High's Betty Crocker Homemaking of Tomorrow for 1972.

17—Jeanne Haselschwardt, a student at Chelsea High, won the DAR Good Citizen award for 1972.

17—A master plan was being formed for the future development of the Waterloo Recreation Area.

19—Chelsea High debate team placed second in a state tournament.

29—Bulldog cagers lost to Pinckney in district play.

29—Bulldog cagers lost to Pinckney in district play.

29—Bulldog cagers lost to Pinckney in district play.

29—Bulldog cagers lost to Pinckney in district play.

29—Bulldog cagers lost to Pinckney in district play.

29—Bulldog cagers lost to Pinckney in district play.

29—Bulldog cagers lost to Pinckney in district play.

29—Bulldog cagers lost to Pinckney in district play.

29—Bulldog cagers lost to Pinckney in district play.

29—Bulldog cagers lost to Pinckney in district play.

29—Bulldog cagers lost to Pinckney in district play.

29—Bulldog cagers lost to Pinckney in district play.

13—Chelsea Girl Scouts celebrated the 60th year of scouting with a father-daughter banquet.

16—Phil Bareis, head football coach at Chelsea High, was named Coach of the Year by the Jackson Area Coaches Association.

16—Chelsea Fire Department reported the number of calls was up 50 percent over last year, but the damage was down.

17—Terry D. Eisemann was named Chelsea High's Betty Crocker Homemaking of Tomorrow for 1972.

17—Jeanne Haselschwardt, a student at Chelsea High, won the DAR Good Citizen award for 1972.

17—A master plan was being formed for the future development of the Waterloo Recreation Area.

19—Chelsea High debate team placed second in a state tournament.

29—Bulldog cagers lost to Pinckney in district play.

29—Bulldog cagers lost to Pinckney in district play.

29—Bulldog cagers lost to Pinckney in district play.

29—Bulldog cagers lost to Pinckney in district play.

29—Bulldog cagers lost to Pinckney in district play.

29—Bulldog cagers lost to Pinckney in district play.

29—Bulldog cagers lost to Pinckney in district play.

29—Bulldog cagers lost to Pinckney in district play.

29—Bulldog cagers lost to Pinckney in district play.

29—Bulldog cagers lost to Pinckney in district play.

29—Bulldog cagers lost to Pinckney in district play.

29—Bulldog cagers lost to Pinckney in district play.



TEE OFF ON BIRTH DEFECTS is the slogan of the 1973 March of Dimes campaign, which begins in January. Chelsea ladies helping to fight with

defects are Mrs. Charles Bongo, Chelsea community chairman; Mrs. Ray (Elnore) Canine, Mrs. Arthur (Ann) Steinaway, and Mrs. Ray (Pat) Turner.

Luck of the Irish Holds True for Pat Shoemaker

After failing to win anything in the state lottery for the past six weeks, Gene Shoemaker became discouraged. Last week he gave his wife, Pat, all of the tickets he had purchased and wished her luck.

Wouldn't you know it! Mrs. Shoemaker held three winning tickets, giving her \$25 each and three chances at the million dollar drawing coming up.



TRADITIONAL CHRISTMAS SIGHT in Chelsea is this manger scene displayed this year on the grounds of St. Mary Catholic church. The creche was purchased many years ago by the Altar Society of the church with donations from the community

Originally, it was displayed each year on the lawn of McKune Memorial Library. However, two years ago it was moved to St. Mary's when the Library property was converted to a parking lot.

Uncle Lew from Lima Says:

DEAR MISTER EDITOR:

The fellers has waited a month and a half for all the New Jerusalem promised by all the politicians. Saturday night at the country store they discussed the situation up one side and down the other, and they were full agreed the only thing you can be shore about politics is that the pie in the sky before the election is going to be egg on yore face the day after.

Clem Webster had saw this piece in the paper where this feller had divided Americans into three groups, the Low Grumbles, the High Grumbles, and the Meta Grumbles. Clem said you can group politicians low, hi and meta on the promise scale according to how high a office they want. The promisers run the show afore elections, and the grumblers after, was Clem's words.

General speaking, said Clem, they ain't no low or high spenders on the national level, jest meta spenders. He had saw a report on a book by Senator William Proxmire called "Uncle Sam, the Last of the Big Spenders," and he said some of the stuff is enuff to make a meta grumbler out of ever taxpayer.

For instant, the senator says the U.S. had 12 million in the military in World War II. We got two million now, but we got the same number of generals we had in the war. Urban renewal has spent \$12 billion to tear down 400,000 homes, and the program has built only 20,000 homes. The new Senate Office Building cost \$78 a square foot to build, and it has a \$27 million parking garage that puts the cost of ever parking space at \$5,000. We've got thousands of idle servicemen, allowed Proxmire, but we pay civilians \$60 million to do the KP after we double the military pay scale.

They ain't no way, agreed Clem, to make sense of a Government that looks at ever problem upside

down and inside out. The way to make folks good is liberalize laws, the solution to speeding on the roads is to raise the speed limits. That's the kind of thinking, said Clem, that causes folks to meta grumble when the federal Government talks about revenue sharing when all they got in Washington is a debt with interest nearly as big as the budget. And more than a third of the people is living complete or partly off Government "benefits" right now, said Clem.

It is hard, Mister Editor, to see New Jerusalem. Personal, I wasn't in favor of the Indians tearing up all that stuff in Washington, but I see their point. When you consider the way they were running this country and the shape it's got into in the last 200 years you can see it's going to be all Ralph Nader can do to get us straightened out.

Yours truly,
Uncle Lew.

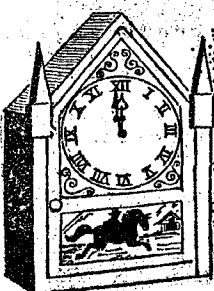
Social Security Office Moving To Plymouth Rd.

Robert A. Kehoe, district manager of the Social Security office in Ann Arbor, announced today that effective with the opening of business on Tuesday, Jan. 2, the office will be located in the Plymouth Building, 2929 Plymouth Rd., Room 210, Ann Arbor.

Kehoe explained that the local office services all of Washtenaw county with at least half of the area beneficiaries not living in Ann Arbor, and the move will make the office much more accessible to the entire county. The building is located on the north side of Plymouth Rd., at Prairie St., just east of Huron Parkway, and about 3/4 mile west of the Plymouth Rd. exit off US-23. There is ample free parking. Moreover, the Plymouth Rd. route on the Ann Arbor bus line also goes out to the new site with hourly service from downtown between 10:15 and 2:15, and every half hour earlier in the morning and later in the afternoon.

Business hours remain 8:45 a.m. to 4:45 p.m., Monday through Friday, except Federal holidays, and the telephone number remains 762-7100. Kehoe added that nearly any Social Security matter, including claims and requests for Social Security numbers, can be handled over the telephone, and he encouraged those not desiring an in-person visit to take advantage of this Teleservice.

REO
IS COMING



INVERNESS INN
MATT and MARGE

Established 1871 **The Chelsea Standard** Telephone GR 5-3581
Excellence Award By Michigan Press Association
1951-1952-1960-1964-1965-1966
Walter P. Leonard, Editor and Publisher

Published every Thursday morning at 800 North Main Street, Chelsea, Mich. 48118, and second class postage paid at Chelsea, Mich., under the Act of March 3, 1879.

Subscription Rates (Payable in Advance)
In Michigan: One Year \$4.00, Six Months \$2.25, Single Copies \$.15
Outside Michigan: One Year \$6.00, Six Months \$3.50, Single Copies \$.20
Service men or women, anywhere, 1 year \$4.00

MEMBER **NATIONAL NEWSPAPER** Association Founded 1886
National Advertising Representative: MICHIGAN NEWSPAPERS, INC., 257 Michigan Ave., East Lansing, Mich. 48828



★ MICHIGAN MIRROR ★

By Elmer B. White, Secretary, Michigan Press Association

Parochial Schools Survive

Back in 1970 when the great parochial battle was part of the state-wide political campaign, one of the strongest supporting arguments was this: without some form of state aid to parochial schools, most would fall and result in a flood of students in the public schools.

The argument continued: it would be better for the state to pay a little of the cost of parochial schools rather than the entire cost of parochial students in a public school. Voters, nonetheless, approved the proposal on the 1970 ballot. This completely abolished financial assistance by the state for the parochial schools.

Despite this the parochial schools have not all come crashing down. In fact, this year the Department of Education reports public school enrollments in Michigan dropped more than private schools.

There was a cutback in parochial schools enrollment in the fall of 1971 when the financially weaker schools folded and about 50,000 students transferred from parochial to public schools. But this fall, non-public school enrollments dropped by some 3,500 students while public school enrollments dropped by 20,000.

"Apparently non-public school enrollments are leveling off and we will not be having large numbers of these children transferring to public schools every year," says Superintendent of Public Instruction John Porter.

State officials originally had expected about 20,000 students to transfer from non-public to public schools.

Keep Those Plates

A warning to people who already have their license plates is issued by Secretary of State Richard Austin.

When you put those new plates on your car or truck, don't just give a heave to the old ones, he says. After all, they are still valid through April 1, and somebody else just might pick them up and use them.

"You should either store them somewhere until that date, or else cut them in half so they're no longer usable," he says. "They snip in half fairly easily with a pair of tin snips."

This is the second year in which motor vehicle owners have been

able to order their plates through the mail, and Austin reports many people are doing it that way, with sales "substantially up from last year at this time."

Rules Apply

This is the first winter in which the new, stiffer snowmobile control law approved by the Legislature has been in effect, and the Department of Natural Resources is trying to remind all snowmobilers about provisions of the new law.

For instance, the department points out, snowmobilers in the upper peninsula and northern lower peninsula should remember they can't run their machines on roadways or road shoulders, except to cross bridges or culverts, or to cross highways that are not limited access highways.

In the southern lower peninsula, they can't be operated anywhere within road right-of-way, or on roadways or shoulders.

That restriction is especially important, since of 30 who died in snowmobile accidents last winter in Michigan, 28 resulted from accidents on roadways.

Beginning Jan. 1, youngsters aged 12 through 15 have to hold snowmobile safety certificates before they can run snowmobiles without adult supervision.

The snowmobiler also is barred from operating his machine at a speed "greater than reasonable and proper for conditions."

It is illegal to drive a snowmobile while under the influence

of alcohol or drugs. If they are used from one-half hour after sunset to one-half hour before sunrise, they must have a lighted tail light and head light.

They also can't be operated within 100 feet of any person or within 100 feet of a fish shanty on a frozen lake at a speed any faster than the minimum required to maintain forward motion.

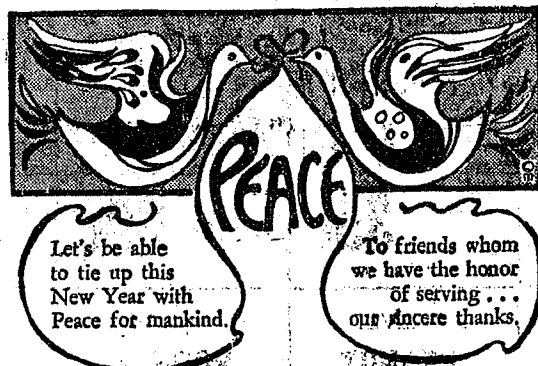
And they must have a muffler to keep the sound below 88 decibels. The rules are fairly specific, and there is a reason for everyone of them: Observance can make snowmobiling a more enjoyable sport for the participant and especially the non-participant.

Servicemen's Corner

Harold Nabb, Jr.,
Assists in Recovery of
Apollo 17 Space Ship

USS Camden—Navy Petty Officer Third Class Harold R. Nabb, Jr., son of Mr. and Mrs. Harold R. Nabb of 11033 McGregor Rd., Pinckney, Mich., is a crew member of the fast combat support ship USS Camden, a unit of the Pacific Recovery Force for moon mission Apollo 17.

The Long Beach, California-homeported ship stood by to assist the primary recovery ship USS Tianderoga in picking up the spacecraft at the splashdown site near American Samoa in the Pacific.



CELEBRATE NEW YEAR'S EVE
at the
WOLVERINE BAR-LOUNGE
Stop by and pick up your reservation tickets.
Sunday liquor license. Full menu for everyone, plus much more in store.
Party starts at 8:30, lasts until 4:30.

NORTH LAKE ORCHARD

Next to Golf Course on south side of North Lake.
13260 N. TERRITORIAL RD.

Many thanks for placing your fruit and other choices with me at this orchard.

GOOD VARIETIES OF APPLES
Excellent Ida Red Winter Apples
\$2.50 - \$5.00 bu.

Closed Mondays and Thursdays.
Open other Days, 10 a.m.-6 p.m.

Next to Highway, no trouble entering or leaving.

PHONE 475-2070
H. WEBB

JUST REMINISCING

Items Taken from the Files of The Chelsea Standard

4 Years Ago...

Thursday, Dec. 26, 1968—
Frank L. Gracey, of Jackson Rd., has finished approximately 20 toys for Chelsea Social Service distribution to the needy in Chelsea. A retired real estate agent from Birmingham, Gracey has made toys for the Salvation Army and other charitable organizations for many years. He called Mrs. Louis Ramp, director of the Social Service, when he heard of the need for toys this year, and offered his specialties, cradles, rocking horses, and hobby horses.

Chelsea Village Council members voted to allow the Chelsea branch of the new District Court system to use the Council Room of the Municipal Building as a court room until the former Chelsea State Bank building has been renovated.

The small percentage of Chelsea School District voters participating in the Dec. 18 county-wide vote favored rejecting a one mill proposal and \$5 million bonding proposition to finance a county vocational education center.

Chelsea High school juniors Heidi Sprague and Christine Alber have been selected as recipients of the French scholarship for summer foreign study as Chelsea students in the Youth for Understanding program. The two third-year French students were selected Friday morning by Vice-Principal Bruce Galbraith, guidance counselor Betty Ostrander, and French teachers Mrs. Robert McKnight and Mrs. Ed Lauson on the basis of applications, tests, and recommendations.

Ten first-year Chelsea wrestlers will participate in the Ann Arbor Novice Tournament Dec. 27 and 28. This will be the first year Chelsea has participated in the large annual tournament. Coach Burley Hendricks said that most Class A, B and C teams in southern Michigan will compete.

Chelsea parents were able to squeeze an additional two hours of Christmas shopping into schedules, minus the company of their children during the Recreation Commission's Christmas Cartoon Show Saturday afternoon.

14 Years Ago...

Thursday, Dec. 25, 1958—

Four generations of the Fleming family will be present for a Christmas gathering at the home of Mr. and Mrs. William Clark. Representing the four generations are Mrs. Clarence J. Fleming, 69; her daughter, Mrs. Alex Mshar, 43; her granddaughter, Mrs. William Clark, 23, and the great grand daughter, Catherine Jean Clark, four and one-half years old.

It was learned this week that James Mshar, a Chelsea High school senior was given honorable mention on an all-state high school football team picked by the Free Press, Detroit News, and the Associated Press.

The Christmas lighting display at the home of Mrs. Margaret Sorensen and family, at 159 Clarendale Court, was selected as the first prize winner in the Chamber of Commerce residential Christmas lighting contest.

There was some question whether the eight robins gathered in the yard of the Max Orembsky family at 715 Cavanaugh Lake were

the last robins of the 1958 season, or the first of the 1959 season.

Commissioned a Marine second lieutenant Dec. 8, was David G. Crocker, son of Mrs. Jean V. Mulard of 107 Adrian St., Tecumseh, and husband of the former Doris M. Halst of 1120 Halst Rd.

24 Years Ago...

Thursday, Dec. 24, 1948—

Christmas dinner guests at the home of Mr. and Mrs. Walter Eschbach were Mr. and Mrs. Herbert Schenk and daughter, Grace Mr. and Mrs. Emanuel Bollinger and daughter, Irma, Mr. and Mrs. Lee Bollinger and children, Mr. and Mrs. Julius Eisele and son, Eldean, Mr. and Mrs. John Pierson, and Mrs. Martha Bahnmiller of this vicinity, and Richard Carlson of Utica.

Chelsea opened the Albion College Invitational tournament at 5 p.m. Tuesday as they downed the Hudson Tigers in a hard-fought game, 37-31. Hudson was unbeaten in four previous starts while Chelsea entered the game with a five-one record.

1949 license plates went on sale Monday, Dec. 27, instead of Jan. 3, announced A. D. Mayer, manager of the Chelsea branch of the office of the Department of State. The Rev. O. W. Morrow, reporting at Monday night's Kiwanis meeting as chairman of the Christmas basket committee, stated that 16 baskets were delivered to needy families.

Election of officers of St. Paul's Sunday school for 1949 held during the regular session Sunday morning, resulted as follows: Mrs. John Oesterle, superintendent; Dorotha Pielemeier, assistant superintendent; Eleanor Schmidt, secretary; Nancy Eiseaman, assistant secretary; and Bruce Peabody, secretary.

Before a huge crowd (about 10 people) the girls' high school basketball team played its first home game with Dexter. The players as interested and enthusiastic as the student body that supported them.

34 Years Ago...

Thursday, Dec. 29, 1938—

Chelsea and vicinity had a white Christmas as the result of the snow storm during the past week. The pavement was clear on Christmas day, although the streets in town were slippery.

Mrs. William G. Luick, 76, died Monday night Dec. 26, of a heart attack at her home on Lincoln St.

Edward S. Spaulding, life-long resident of Sylvan township, died Monday afternoon, Dec. 26. He was the eldest son of Dennis A. and Elizabeth (Udpike) Spaulding, and was born May 2, 1862.

Dr. and Mrs. Charles Truesdell and family, and Miss Florence Hirsch of Detroit, Mr. and Mrs. Ottmar Berstler and family, Mr. and Mrs. John McMahon and family, and Mr. and Mrs. Dexter Daventport and family, and Mr. and Mrs. Edward Zeeb of Ann Arbor, and Mr. and Mrs. Emmett Sargent and daughters, of Jackson were guest at the home of Mr. and Mrs. O. D. Schneider on Monday.

— OFFICIAL NOTICE —

MEETING OF THE

DEXTER TOWNSHIP BOARD

will be held

TUESDAY, JANUARY 2, 1973 - 8 p.m.

at the Township Hall, 6800 Dexter-Pinckney Rd.

AGENDA:

Federal Revenue Sharing.

WILLIAM EISENBEISER
Dexter Township Clerk

Where Is Everyone Going on Jan. 7?

MANCHESTER, JAYCEE

SNOWMOBILE RACE

* Held at Manchester Speedway
* Class B - MISA Sanctioned
* High Banked Oval Racing
* Expected \$2,000 Purse

* General Admission \$2
* Entry \$10
* Reg. Starts at 9:30 to 11:30
* 1st Race at 12 noon

Proceeds for Community Betterment

WASHTENAW COMMUNITY COLLEGE EVENING COURSE OFFERINGS

at

CHELSEA EXTENSION - Chelsea High School

Winter Semester 1973

Classes Begin Monday, January 8, 1973

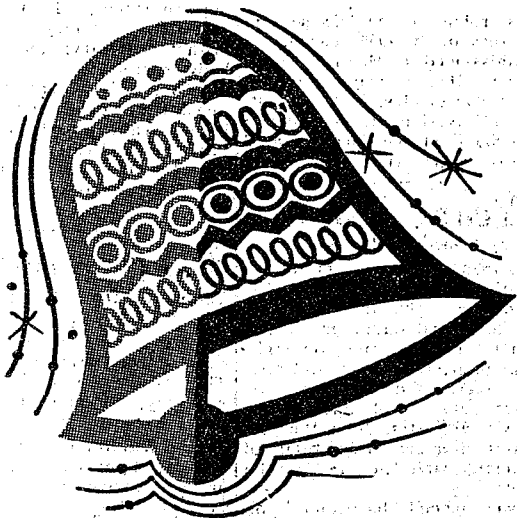
Course Name & Number	Credit	No.	Days	Hours
Intro. to Electricity 090	3	55	Wed.	6:00-10:00 p.m.
Prin. of Sociology 100	3	55	Mon.	7:00-10:00 p.m.
Intro. to Psychology 100	3	55	Thurs.	7:00-10:00 p.m.
Blueprint Reading 101	3	55	Mon.	7:00-10:00 p.m.
Drawing & Painting 101	3	55	Mon.	7:00-10:00 p.m.
Intermediate Algebra 109B	3	55	Wed.	7:00-10:00 p.m.
Adv. Conversational Spanish 121	2	55	Thurs.	7:00- 9:00 p.m.
Business Law 122	3	55	Mon.	7:00-10:00 p.m.
Labor Mgt. Relations 150	3	55	Wed.	7:00-10:00 p.m.
State & Local Govt. 150	3	55	Tues.	7:00-10:00 p.m.
Aviation Physiology 160	3	55	Tues.	7:00-10:00 p.m.
Children's Literature 210	3	55	Thurs.	7:00-10:00 p.m.
Prin. of Economics 211	3	55	Tues.	7:00-10:00 p.m.

REGISTRATION: Thursday, January 8

or

Registration also accepted at first class session.

For further information, call 971-6300, Ext. 453 or 421



Ring out, sing out happy
wishes for a bright New Year.
May the comfort and joy of the
holidays live in our
hearts through every season.
May peace and brotherly love
prevail — in families and
among all mankind.

HAPPY NEW YEAR

TOP VALUE STAMPS

WHEN YOU SHOP AT THE

Jiffy market

OPEN
7 DAYS
A
WEEK

COMPLETE
SUPER
MARKET
LIQUOR

Big Enough To

Serve You . . . Small Enough To Know You!

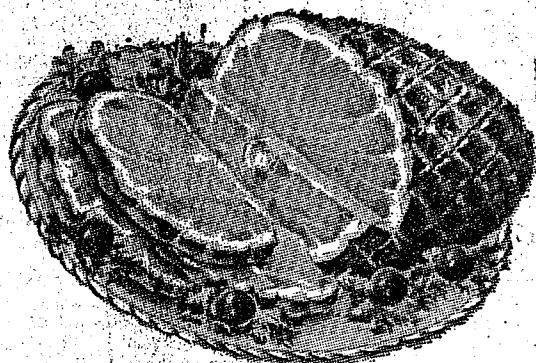
CORNER OF SIBLEY & WERKNER RDS. . . CHELSEA, MICHIGAN PHONE 475-1701

HOURS: 7 a.m. to 10 p.m. DAILY
7 DAYS A WEEK

WE ACCEPT
U.S.D.A. FOOD STAMPS

SALE PRICES EFFECTIVE
Thurs., Dec. 28 thru Sun., Dec. 31

Michigan
State
Lottery
Agent



FARMER PEET'S

HI-STYLE HAM

Semi-Boneless
De-Fatted
Smoked
Fully Cooked

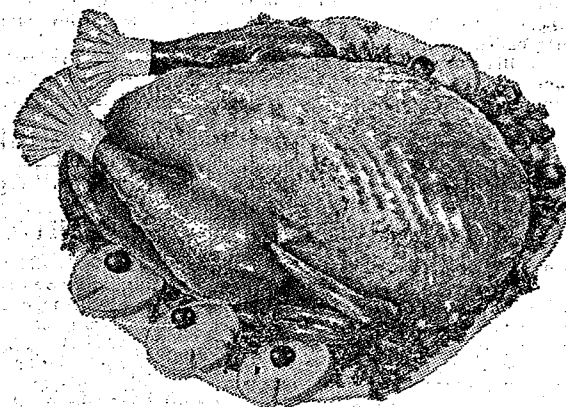
99¢ lb.
Whole or Half

U.S.D.A. GRADE A
YOUNG

TURKEYS

5-9 Lbs. 29¢ lb.
10-12 Lbs.
14-16 Lbs.
18-20 Lbs.
20-24 Lbs.

Selling Out Our
Holiday Supplies
LIMITED QUANTITY



PESCHKE THRIFTY BACON

1-Lb.
Sliced 69¢

FRESH OYSTERS

Full Pint
16 Oz. \$1.69

PINCONNING COLBY LONGHORN BULK CHEESE

79¢ lb.

HERRUD CHUNK BOLOGNA

59¢ lb.

CHECKERBOARD Mixed White & Dark Meat TURKEY ROAST

89¢ lb.

YOUNG, TENDER BEEF LIVER

59¢ lb.

AGAR CAN HAM

5-Lb.
Can \$5.49

CHECKERBOARD U.S.D.A. GRADE A ROCK CORNISH GAME HEN

1 1/2-Lb.
Avg. 79¢ ea.

MEADOWDALE SLICED BACON

79¢ lb.

SPECIAL for the HOLIDAYS



Your Choice
CANADA DRY MIXERS
The Ever-Popular
7-UP
The Famous Original
SQUIRT
Deliciously Different
VERNON'S GINGER ALE
COCA-COLA

Large 28-Oz. No-Return Bottles.
29¢ Bottle Case of 12 Bottles \$3.48



XMAS PARTIES - XMAS - NEW YEAR'S

SUNSHINE PRETZEL STIKS

10-Oz.
Pkg. 29¢
SAVE 10¢

SUNSHINE PRETZEL TWIST

12-Oz.
Pkg. 39¢

MEADOWDALE CORN CURLS

1-Lb.
Bag 39¢



CRISPY FLAKE POTATO CHIPS

13-Oz.
Bag

SUNSHINE CORN CHIPS

Reg. or Bar-B-Q
5-Oz.
Pkg. 19¢

SALTED PEANUTS IN THE SHELL

Bulk
Lb. 45¢

FISHER'S SALTED SPANISH PEANUTS

59¢ lb.



MEADOWDALE FRENCH FRIES

2-Lb.
Bag 29¢

NEW YORK GARLIC BREAD

1-Lb.
Loaf 49¢

RHODES SAMPLER LOAF WHITE BREAD

1-Lb.
Loaf 10¢

TREESWEET ORANGE JUICE

5 6-Oz.
Cans \$1

SALUTO PARTY PIZZA

2-Lb.,
1-Oz. \$1.99

COLD BEER — KEG BEER — WINES — COMPLETE LIQUOR SUPPLY

MAXWELL HOUSE

COFFEE

JIFFY MARKET
HOT PRICE!

1-Lb.
Can

79¢

ANY SIZE — ANY BRAND

CIGARETTES

JIFFY MARKET
HOT PRICE

Per
Crtn.

\$3.29



GERBER'S BABY FOODS

STRAINED
VEGETABLES
FRUITS 8¢
CEREALS 19¢
JUNIOR
FRUITS,
VEGETABLES 15¢

DAILEY'S
KOSHER
DILL CHIPS
1-Lb.,
10-Oz.
Jar 39¢

Yellow or White
BUNNY POP
POPCORN
2-Lb.
Pkg. 19¢

HANOVER
OLD FASHION
BEAN SALAD
1-Lb.,
1-Oz.
Jar 35¢

GLAD
TRASH BAGS
10 Bag
Box 59¢

CHEF BOY-AR-DEE
CHEESE
PIZZAS
15 3/8-Oz.
Box 49¢

DEL MONTE
CATSUP
14-Oz.
Bottle 19¢

NESTLE'S
HOT COCOA
MIX
1-Oz.
Pkg. 5¢

NESTLE'S
CANDY
BARS
10
PAK 79¢
LARGE 10c BAR

VELVET
PEANUT
BUTTER
1-Lb.,
2-Oz.
Jar 59¢

HUNT'S
PORK &
BEANS
12-Oz.
Can 19¢

JIFFY
CAKE or FROSTING
MIXES
9-Oz.
Boxes 10¢

DAILEY'S
POLISH DILL
ICICLES
1-Lb.,
10-Oz.
Jar 39¢

BREAD and MILK

KLEEN-MAID
WHITE

RISDON'S
HOMOGENIZED

BREAD MILK

1 1/4-Lb.
Loaf 19¢

Gal. 89¢

JIFFY
MARKET

Cold Weather Gas You Can Depend On

MARATHON GAS PUMPS

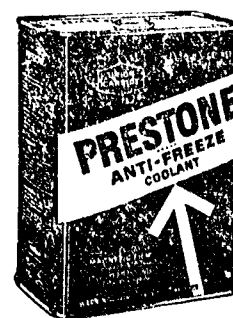
Finest Top Quality Gas at Low Prices!
PLUS TOP VALUE STAMPS

JIFFY
MARKET

MARATHON

REGULAR
GAS 35.9
Includes All Taxes

PREMIUM
GAS 37.9
Includes All Taxes



\$1.89
gal.

Windshield
WASHER
CLEANER

ONE
GALLON
49¢
Special!

Thank
You



We appreciate your business!

GAS PUMPS & STORE OPEN 7 a.m. to 10 p.m. 7 Days a Week | U.S. Authorized Food Stamp Store | Daily & Sunday Papers | AUTHORIZED MICHIGAN LOTTERY TICKET AGENT

Ads
Taken
Till 5 p.m.
Tuesday

USE ACTION-PACKED WANT ADS

Just
Phone
475-1371

WANT ADS

The Chelsea Standard WANT AD RATES

PAID IN ADVANCE—All regular advertisements, 10 cents for 25 words or less, each insertion. Count each figure as a word. For more than 25 words add 2 cents per word for each insertion. "Blind" ads or box number ads add 50 cents extra per insertion.

CHARGE RATES—Same as cash in advance, with 15 cents bookkeeping charge if not paid before 5 p.m. Tuesday preceding publication. Pay in advance, send cash or stamps and save 15 cents.

DISPLAY WANT ADS—Rate, \$1.10 per column inch, single column width only. 3-point and 14-point light type only. No borders or boldface type. Minimum 1 inch.

CARDS OF THANKS or MEMORIALS—Single paragraph style, \$1.00 per insertion for 50 words or less; 2 cents per word beyond 50 words.

COPY DEADLINE—5 p.m. Tuesday week of publication.

Signs Painted 475-7391

CLINTON CHAIN SAW, 20-in. bar, 6 h.p. engine. New chain and gear. Used very little. \$65. Ph. 475-8661. x24tf

GAR - NETT'S
Flower & Gift Shop
Your Friendly Florist
112 E. Middle St., Chelsea
PHONE 475-1400

Funeral Flowers
Wedding Flowers
Cut Flowers (arranged or boxed)
Potted Flowering Plants
Green Plants - Corsages
WE DELIVER x9tf

THORNTON 475-8628

MIGHTY SHARP—3-bedroom, 1½ baths, completely and beautifully remodeled with a great back yard adjacent to stream, all within the village limits.

MILL POND FRONTAGE—Sharp 2-bedroom home with one-bedroom walkout apartment in the basement. Beautiful setting.

NORTH LAKE—Brick ranch, lovely home with 3 bedrooms, 2 baths, 2 fireplaces, large deck off living room and a walkout basement. Good beach access to North Lake.

GRASS LAKE—3-bedroom ranch home in "like new" condition in the country. Just a short distance to schools.

QUAD LEVEL—Brand new brick and cedar siding, 3 bedrooms, family room with fireplace. A mighty sharp home at North Lake.

WISHING YOU A HAPPY NEW YEAR

John Pierson 475-2084
Bob Riemenschneider 475-1469
Helen Lancaster 475-1198
Bob Thornton 475-8857
Nancy Nix, Secretary

THORNTON
323 S. Main Realtor Chelsea 28

WANT ADS

PILOTS—Aviation physiology. Enrollment now. Washburn Community College, Chelsea branch. Three semester hours credit. 7 p.m. - 10 p.m. Tuesday evening, Jan. 9 - April 10, 1973. Call 475-2931 for information. x29

A-1 USED CARS

'72 LTD 2-dr.
'72 OLDS 2-dr., air
'72 PINTO Station Wagon
'72 MAVERICK 2-dr.
'71 TORINO 2-dr. hardtop
'70 FALCON 4-dr.
'71 GALAXIE 500 4-dr.
'69 GALAXIE 500 4-dr.
'69 FORD 4-dr.
'67 MERCURY 2-dr. hardtop
'66 GALAXIE 500 2-dr. hardtop
'65 FORD Station Wagon
'65 FAIRLANE Station Wagon
'68 FORD 4-dr.

Check Our New Triangle Truck Lot

'70 CHEV ¾-ton Pickup
'70 FORD ¾-ton Pickup
'69 CHEV 1½-ton Van
'69 DODGE ¾-ton Pickup
'68 FORD Utility
'65 FORD ¾-ton Pickup

We Have A New Phone Number 475-1301

PALMER FORD
Open Every Evening Till 9:00
All Day Saturday
Chelsea 475-1301 x27tf

The Playtex Bra and Girdle

Sale
Is Now On.
Save Now!
DANCER'S

BURGLAR ALARMS

Custom designed for your home, office or business. Many styles to meet any need. Let us show you an application to solve your problem.

Phone 475-7322

DEPENDABLE TREE SERVICE
trimming, cutting and removal.
Free estimates. 426-4110. x29

WANT ADS

KNAPP SHOES

For Cushion Comfort
Robert Robbins
475-7282 48tf

NEW YEAR'S EVE PARTY

at the

Knights of Columbus

Hall
Old US-12

Sunday, Dec. 31

from 9 p.m. on

Donation of \$15 per couple includes
mix, ice, light lunch and live
music.

1965 CHRYSLER Town Coupe 4-
dr. \$195.00 223 Lincoln. Ph.
475-8808. x29

New '72 Left-Overs Clearance Sale

'72 PLYMOUTH Fury III, 4-dr.
hardtop.
'72 PLYMOUTH Fury II, 2-dr.
hardtop.

Quality Used Cars

'71 DODGE Royal Sportsman wagon.
V-8, auto, p.s., p.b., air
cond. \$3195
'70 DUSTER 340 sport coupe, 3-
speed, p.s., vinyl roof, rallye
wheels, RWL tires, sharp \$1795
'69 DODGE D-200 pick-up, 318, 3-
speed, junior West Coast mirrors,
radio, new paint \$1895
'69 CHRYSLER Newport 2-dr.
hardtop, 383, automatic, p.s.,
air cond., sharp \$1695
'67 OLDS Cutlass 2-dr. hardtop,
V-8, auto, p.s., p.b., sharp \$995
'67 FORD Econoline Van 4-cyl., 3-
speed, radio, 40,000 miles.
Sharp. \$995
'67 FURY I 4-dr. sedan, 225, 2-
speed, good tires. \$595
'66 BARRACUDA 6-cyl., automatic,
bright red and sharp \$695
'66 IMPERIAL Full power, AM-
FM, air cond. Must be seen.
\$1195

Make Me An Offer I Can't Refuse!

'66 BUICK LeSabre 4-dr. hardtop,
V-8, auto, p.s., p.b.
'64 FORD 2-dr. sedan, 6-cyl., 3-
speed. Good transportation.
'62 CHEVY Van

**Village
Motor Sales, Inc.**
IMPERIAL - CHRYSLER
DODGE - PLYMOUTH
Phone 475-8881
1185 Manchester Rd., Chelsea
Hours: 8 a.m. to 6 p.m.
Tues. thru Fri. Until 9 Monday.
9 a.m. to 2 p.m. Saturday x28tf

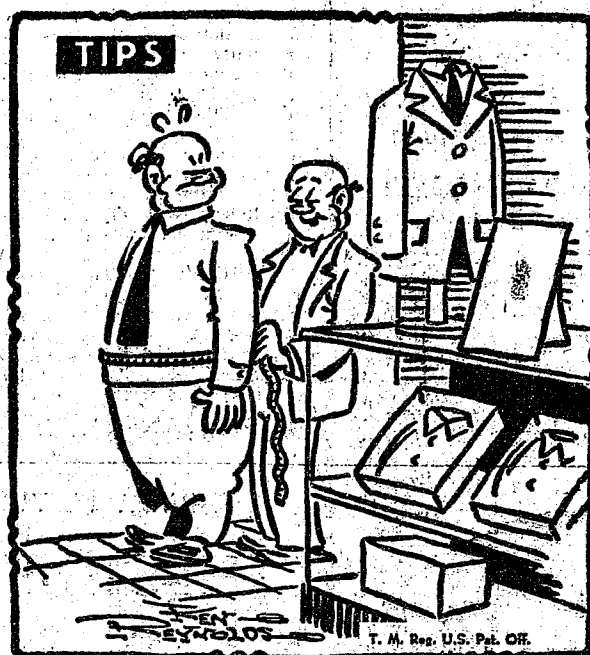
FOR RENT with option to buy.
\$175 per month. 3-bedroom, 6-
year-old home on ¼ acre. 2-car
garage, aluminum siding, cement
drive, trees. McGregor Rd., near
Portage. Call 426-8188 or 426-8160.
Mary Walter. x29

FOR SALE — Alaskan Malamute,
two-week-old male. Must sell for
lack of space. 475-7835. -29

ELECTROLUX VACUUM CLEANERS

SALES and SERVICE

JAMES COX
Ph. 428-2931 or 428-8221
Manchester



"Looks like the freezer you folks got in the Standard
Want Ads - isn't getting it's share!"

WANT ADS

DIAMOND ROOFING, reroofing
and repairing. Roof louvers in-
stalled. Gutters cleaned. Licensed
roofer. Call 475-1129. x48tf

Headquarters for
**RED WING
WORK SHOES**
Foster's Men's Wear 40tf

CUSTOM BUILDING

LICENSED & INSURED
FREE ESTIMATES

TOTAL CONSTRUCTION SERVICES

—Residential, commercial and
industrial
—Garages
—Remodeling - Additions
—Aluminum Siding
—Roofing
—Trenching

SLOCUM CONTRACTORS & BUILDERS

Serving Washtenaw County
For Over 20 years
20700 OLD US-12
CHELSEA
Phone 475-8321 or 475-7611 22tf

BEST WISHES for a HAPPY and PROSPEROUS NEW YEAR

**CLARENCE WOOD
Real Estate**

WANT ADS

FOR SALE — '69 Camaro and '40
Chevy. Ph. 475-7395. x25tf

The Playtex Bra and Girdle Sale

Is Now On.
Save Now!
DANCER'S

New from Fuller Brush IN DRYER FABRIC SOFTENER \$2.49 - 16 oz.

OTHER SPECIALS THIS WEEK

Ironing Board Cover
Spray Starch
Oven Spray and Cleaner
Hand Scrub Brush
Germicidal Cleaner
Food Seasoning - Foot Spray
Bath Brush - Body Lotion
Nylon Dust Mop
Ph. 426-3387 28

1972 ZIG-ZAG, \$48.50—Small paint
damage in shipment. In walnut
sew table. Sews stretch material.
No attachments needed as all con-
trollers are built-in. Makes button-
holes, sew on buttons and does
many fancy designs. Only \$48.50
cash or terms arranged. Trade-ins
accepted. Call Ypsilanti collect
483-4329 9 a.m. to 9 p.m. Electro
Grand. 28

FOR SALE—Sony AM/FM stereo
radio and cassette tape deck, in-
cludes 2 Sony speakers and micro-
phones. Perfect condition, \$250.
28 Call 475-2082. -28

WANT ADS

CALL NOW SAVE \$\$\$ Greenwood

for
Siding - Remodeling
FREE ESTIMATES
Call
Chelsea 475-2400 x7tf

Contractor Servicing Chelsea, Dexter and Manchester Areas

Complete Home Remodeling
Inside and Outside
Specializing in extra living space,
recreation rooms, kitchens and
paneling. Installing all aluminum
products, 5" eavestroughs, custom-
made awnings, windows and doors,
aluminum siding in many selected
colors and styles.

Please Call

DALE COOK
Chelsea 475-8868 20tf

Pine Haven Saddlery

4534 Dexter Townhall Rd.
Phone Dexter 426-4268
Complete line of English and
Western equipment. 10% discount
to all 4-H Club members.
Store Hours: Mon.-Sat., 9-9
Sunday, 10-9 x52tf

A fine selection of
New and Used Cars
for immediate delivery

Harper Pontiac Sales & Service

475-1306
Evenings, 475-1608 23tf

The Playtex Bra and Girdle Sale

Is Now On.
Save Now!
DANCER'S

POTATOES — Quality, seconds,
\$1.50 bushel. 7 a.m. to 8 p.m. No
Sunday sales. Carl Schoonover, 9
miles northwest of Chelsea on M-
52, right on Boyce Rd. left to
15557 Farnsworth Rd. Bring own
container. 9tf

FOR SALE—Dinette set, with six
chairs, \$40; table lamp, \$3; fold-
ing high chair, \$8; play pen, \$8.
Ph. 475-2498. x28

WANT ADS

SEE US for transit mixed con-
crete. Klumpp Bros. Gravel Co.
Phone Chelsea 475-2630, 4920 Love-
land Rd., Grass Lake, Mich. x40tf

Fireplace Builder

Field stone mason, block and brick
mason, tuck pointing.
FREE ESTIMATES
Call 475-8025 after 3 p.m.

Patrick Grammatico

STONE WORK—Fireplace and ma-
sonry. For estimates call 475-
1106. x51tf

Convenient Shopping at

Sprague Buick, Olds,
Opel, Inc.

YEAR END CLEARANCE SALE

1972 BUICK Riviera, real nice. Air
cond. \$4695
1972 OLDS Cutlass station wagon,
air cond. Real nice \$3495
1972 DODGE Swinger 2-dr. hard-
top, V-8, a.t., p.s., real nice.
\$2695
1971 OLDS 98 4-dr. hardtop, full
power, a.c. Nice car \$3895
1971 OLDS Delta 88 2-dr. hardtop,
air cond., real nice \$2395
1971 BUICK LeSabre 4-dr. sedan,
air cond., 11w mileage \$2895
1971 OLDS Delta 88 4-dr. sedan
\$2395
1970 PONTIAC Grand Prix, air
cond. \$2695
1970 SKYLARK Conv G.S., a.t.,
p.s., a black beauty \$2095
1970 SKYLARK 2-dr. sedan, a.t.
\$1695
1970 VOLKSWAGEN \$1395
1969 OLDS Vista Cruiser, air cond.
\$1995
1969 DELTA 88 4-dr. sedan, air
cond. \$1795
1969 PONTIAC Bonneville 4-dr.
hardtop, vinyl top \$1495
1968 BUICK ELECTRA, 4-dr. hard-
top, air cond. \$1095
1968 CHEV Caprice 2-dr. hardtop
\$1095
1967 OPEL station wagon \$795
1967 BUICK Wildcat 2-dr. hardtop,
air cond. \$995
1966 FORD Mustang \$495
1964 DODGE 4-dr. sedan \$195

Here Is a Real Holiday Special

1970 CUTLASS 4-dr. sedan, auto-
matic trans., p.s., air cond.,
and a real nice clean car.
\$2095

SPRAGUE
Buick-Olds-Opel, Inc.
Phone 475-8664
1500 S. Main St., Chelsea 27tf

Gem Travel Trailers and Campers

PICK UP COVERS

4" \$100.00
28" \$179.00 and up

Triangle Sales

Chelsea 475-4502 40tf

WANT ADS

VACUUM CLEANERS — Electro-
lux, authorized sales and service.
James Cox, Manchester. Ph. 428-
2931 or 428-8221. 42tf

TREE REMOVAL DONE — Also
buyers of standing timber and
walnut trees. Chelsea 475-7631. 34tf

THE LITTLE FLOWER SHOP

3451 Waltrous Rd., Chelsea

Phone GR 5-8608

Sponsoring Welcome Wagon
in Chelsea, Dexter areas.
Flowers, corsages, arrangements
and plants.
Weddings and funerals. x47tf

TRAVEL TRAILERS — 18-ft. and
up; 10x55 ft. trailers. John R.
Jones Trailer Sales, Gregory, Mich.
Phone 498-2655. x43tf

Custom Kitchen Cabinets

and

Formica Tops

Made to Order

475-2857 32tf

PIANO TUNING, Chelsea and area.
Facilities for reconditioning and
rebuilding. Used piano sales; re-
conditioned grand and upright.
B. Eklund, 426-4429. x50tf

Sylvan Township

16 acres, part wooded.
Excellent building location.
List your property with us for fast,
efficient service.

R. D. MILLER REAL ESTATE

Real Estate Broker
475-7311
15775 Cavanaugh Lake Rd.
Chelsea, Mich. 15tf

HORSES FOR SALE—Quarter and
Grade. Ph. 475-1149. 12tf

ROBERT A. ALDER, licensed
contractor. Residential building,
remodeling. No job too small.
18200 Boyce Rd., Gregory, Mich.
48137. Phone 498-2539. -47tf

CAR RENTAL by the day, week-
end, week or month. Full insur-
ance coverage, low rates. Call Lyle
Chriswell at Palmer Motor Sales,
475-1301. 25tf

ELECTROLUX, \$22.50 — Only 6
left. In A-1 condition with clean-
ing tools and paper toss-out bags.
Guaranteed. Only \$22.50 cash. Call
Ypsilanti collect 483-4329 9 a.m. to
9 p.m. Electro Grand. 28

GERMAN SHEPHERD PUPS,
AKC, for sale. 9 weeks. Black
beauties, bred for show, disposition,
brains. Shots and wormed. 428-
8613. x29

HOUSE FOR RENT—Duplex, For-
est Ave., in Dexter. Quiet loca-
tion for one or two people only.
Unfurnished. Ph. 426-3582. x29

New and Remodeling Residential

Carpenter Contractor

M. A. LAWRENCE

Ph. 475-1106 x20tf



May the
New Year bring
abiding Peace and
harmony. It is with sincere thanks
we extend our best wishes to everyone.

Staffan Funeral Home
"Funeral Directors for Four Generations"



CLOSED NEW YEAR'S DAY

Jim's Union 76 Service
Jim Kalishek

SCHNEIDER'S GROCERY

CHOICE MEATS - FINE FOODS

28-OZ. NO-RETURN BOTTLES

7-UP . . . 3 for 79c

28-OZ. NO-RETURN BOTTLES

Vernors . . 3 for 79c

15-OZ. BAG LAY'S

Potato Chips . . . 59c

10-OZ. PKG. ECKRICH

Smok-y-Links . . . 69c

24-CT.

Head Lettuce . . 29c

10-OZ.

Coke . . . 8 pac 85c

A Complete Line of Bulk and Cold Meats and Smoked Sausages.
Featuring Alexander & Horning and Eckrich Products

BEST WISHES FOR A

HAPPY NEW YEAR

Carl - Red - Al - Millie - Jeff

WANT ADS

CE — Chain link or redwood fence, all sizes. Material sold for installation or we will install. Call 475-8147 or (517) 522-4337 for free estimate. 52tf

SALE—Inlaid vinyl and linum. Also tile. Armstrong and oleum. Marlin. Installed by ad craftsmen. Estimates, terms. ad Bros. 475-8821. 82tf

G. G. HOPPER
Building Contractors
Phone GR 5-5581
Gregory 498-2148 40tf

Automotive
Rust Proofing
Cars and Trucks

Village
Motor Sales, Inc.
IMPERIAL - CHRYSLER
DODGE - PLYMOUTH
Phone 475-8861
135 Manchester Rd., Chelsea
Hours: 8 a.m. to 6 p.m.
Thru Fri. Until 9 Monday.
9 a.m. to 2 p.m. Saturday. x21tf

TYPIST

Accurate, 55-60 wpm.
Apply in Person

Chelsea Standard

100 N. Main St. Ph. GR 5-5581 2

Low Low
Down Payment
On New
GOLD KEY
MORTGAGES

For information ask your Realtor
or call 663-7555.

Ann Arbor Federal
Savings
Equal Housing Lender x87tf

FOR SALE OR TRADE—Wind-up phonograph, \$40; country store display case, \$40; Toledo set scales, \$15; antique sled, \$30; wrapping paper holder, \$3; small iron scales, with scoop, \$20; over 6 ft. Christmas tree, \$3; sturdy desk chairs, \$3 each; old steering wheel, \$8.50; 2 army field desks, \$50 each. Phone 426-8838. x24tf

LOUIS SCHOOL Record is for sale at the Chelsea Card and Gift Shop. 23tf

PLACEMENTS UNLIMITED has openings for secretaries, accountants, clerks, bookkeepers, and general office clerks. Call 973-0550. x22

TROIT FREE PRESS morning route, within the village. Must be at least 12 years old. Ph. 475-8147. 24tf

ANY TYPE of photo copying, now available at McKune Memorial Library at 10 cents per page. 24tf

DRSESHOEING by Ron Wheeler. Winter shoes, leather pads, winter trims. Phone 697-8749. x29

WANT ADS

PROFESSIONAL CARPET cleaning service expanding to Washenaw county. All sizes and types of carpets cleaned, day or night. Call 428-7269 or (517) 522-4337 for free estimate. 52tf

CAR & TRUCK LEASING. For details see Lyle Christwell at Palmer Motor Sales, 475-1301. 49tf

LEHMAN WAHL
Land Appraisal
Residential
and Farm
17037 West Austin Rd.
Manchester, Mich.
Area Code 313
423-8886. 2tf

FOR REAL DOLLAR SAVINGS be sure and see us before you buy any new or used car. Palmer Motor Sales, Inc. Your Ford Dealer for over 50 years. 2tf

PATCHING and PLASTERING. Call 475-7489. 83tf

REPAIR SERVICE for household refrigerators, freezers and garbage disposers. Call Bill, 426-8514. x7tf

CLOGGED SEWER

Reynolds Sewer
Service

We Clean Sewers Without Digging
Drains Cleaned Electrically

FREE ESTIMATES
2-YEAR GUARANTEE
Phone Ann Arbor NO 2-5277
"Sewer Cleaning Is Our Business—
Not a Side-Line" 85tf

EVINGER REAL ESTATE, Dexter, 426-3286, 426-8518. x18tf

FORMAL WEAR

RENTAL SERVICE
Proms - Weddings - Special Events
6 different colors.

Foster's Men's Wear 43tf

KITTENS FREE — 8 weeks old. Ph. 475-7992. x23tf

HAMMOND ORGAN teachers, wanted to teach in their own homes. Call Grinnell Brothers, Ann Arbor, 662-5667. 34tf

FOR RENT—Unfurnished, 3 bedroom duplex. All electric, fully carpeted. \$225 per month plus electricity. 426-8356. x24tf

FOR SALE—1 acre building sites, Chelsea area. Phone 475-2828. 16tf

FOR SALE — Indian cents, postcards, books, foreign coins, Australian opals, and other articles. Lawrence E. Guinan, 1571 Sugar Loaf Lake. Call 475-2317. x26tf

FIREPLACE WOOD FOR SALE. Seasoned oak and hickory, and other hard woods. Will deliver. 475-1471. 23tf

ATTRACTIVE \$65 per week part-time job for housewives, 7:30 p.m. to 10:30 p.m. 3 evenings weekly. Call 229-6788. x29

WANT ADS

KITCHEN HELP WANTED—Must be at least 18. Apply in person. Chelsea Restaurant. 10tf

Complete Body Repair Service

Bumping - Painting
Windshield and Side Glass
Replacement
Free Pick-up & Delivery
Open Monday Until 9
CONTACT DON KNOLL
FOR FREE ESTIMATE x14tf

Village
Motor Sales, Inc.
IMPERIAL - CHRYSLER
DODGE - PLYMOUTH
Phone 475-8861
1185 Manchester Rd., Chelsea
Hours: 8 a.m. to 6 p.m.
Tues. thru Fri. Until 9 Monday.
9 a.m. to 2 p.m. Saturday x14tf

WE BUY old stringed instruments. Especially interested in guitars, banjos, mandolins, and autoharps. Please call 663-8886. x35

BOWLING SNOW REMOVAL Service, residential and commercial, low rates. Prompt and dependable service. Call evenings on the week days and all day on the week-ends. 475-2129. x24tf

SNOW TIRE SALE

NYLON 4 PLY WIDE 70
AND 78 SERIES

Whitewalls, warranted for the life of tread, for road hazard and workmanship and materials.

B78-13 wide white	\$17.95
B70-14 wide white	\$20.95
F70-14 wide white	\$21.95
F70-14 wide white	\$23.95
G70-15 wide white	\$22.95
G70-15 wide white	\$24.95
H70-15 wide white	\$25.95

PREMIUM POLYESTER BELTED WHITE SIDEWALLS WIDE 78 SERIES

Warranted 100% for first 25% of treadwear for both road hazard and workmanship. Pro-rata for balance of tread life.

E78-15 wide white	\$25.95
F78-14 wide white	\$26.95
G78-14 wide white	\$27.95
H78-14 wide white	\$28.95
G78-15 wide white	\$28.95
H78-15 wide white	\$29.95
J78-15 wide white	\$30.95

FREE MOUNTING
STUDS AVAILABLE
Truck Tires Available
Charge Cards Accepted
Bank Americard
Master Charge
Standard Oil

PALMER FORD

Since April 1912
Chelsea 475-1301 x27

CALL FRANK for all your carpet cleaning jobs, morning or weekend. Needs only 3 hours to dry. Only 10c per square foot. Phone now for free estimate, 761-4828. All work guaranteed. 38tf

WANT ADS

FOR SALE—Bird feed and sunflower seed. 50-lb. bag, \$8.75. Cole's Elevator Co., Inc., Gregory, Phone 498-2735. x31

NOW Full Time Complete Body Shop Service

Stop in For An Estimate
PALMER FORD
222 S. Main St.
475-1301 27tf

FOR SALE—Aureomycin Crumblies, 50-lb. bag, \$6.75. Cole's Elevator Co., Inc., Gregory, Phone 498-2735. x31

WEDDING, Anniversary, Divorce. Traditional or contemporary. We can furnish the printing. John's Shop, 475-7500 after 5 p.m. week-ends. 1-878-3825. x19tf

1949 DE SOTO, 4-dr. black sedan. 48,000 original miles. Real good condition. Original tires. Another 49 DeSoto for parts. They both go together. 1-878-3825. x19tf

LADY WANTED to stay with a lady woman. Room and board and pay. Telephone Mrs. Alvin Wahr, (517) 522-8551, Grass Lake, or write Chelsea RR2. 28

FOR SALE—5-drawer chest of drawers, ladies cherry desk, antique Dutch pie safe (3 shelves, 2 drawers), 3/4 white iron bed with brass trim. Ph. 475-1873. x29

1949 DE SOTO, 4-dr. black sedan. 48,000 original miles. Real good condition. Original tires. Another 49 DeSoto for parts. They both go together. 1-878-3825. x19tf

PROFESSIONAL cabinet maker will make custom built bookcases, furniture or other quality items from select veneers or solid hard and soft woods, or your choice. Before you spend your money for a production line piece call me. It doesn't cost as much as you think. 426-8274 almost any time. x22tf

RESTAURANT MANAGEMENT CAREERS

BURGER CHEF FAMILY RESTAURANTS

a subsidiary of
General Foods Corporation
has openings in the Ann Arbor and Ypsilanti areas for qualified individuals in food management.

A leader in fast-food field, we offer an excellent starting salary, complete training, profit sharing, bonus plan, and hospitalization and life insurance package. Applicants must be high school graduates with at least 2 years of college or management experience. For further information,

Contact Tom Nappo
at 761-6387

An Equal Opportunity Employer
M-F x28

WIRE-HAIRED TERRIER, 1 1/2 years old. House broken and excellent with children. Call (517) 596-2502 after 7 p.m. 28

GIVE

A Year 'Round Gift
Appointment, Scheduling Books

Day at a Glance
Week at a Glance
Month at a Glance
Year at a Glance
Wall Memo Calendars

Chelsea Standard

FOR RENT—Fair Services Center for meetings, parties, wedding receptions, etc. Weekdays or week-ends. Contact John Wellnitz, phone 475-1518. 28



A Joyful
New Year
May joys, friendships
abound. We appreciate
your loyal patronage.

Waterloo Garage
Leonard Nagler & Family

County ASC Committee, Community Chairmen Named

The Washenaw County ASC Committee for 1973 is chairman, Raymond Girbach of Saline, vice-chairman, Earl Doletsky of Dexter, and member, Lawrence Stein of Ann Arbor.

Terms of office for county committeemen are on a three-year basis, with one new member normally being elected each year at a convention of newly elected ASC community committeemen. The situation varies, however, according to the number of actual vacancies on the committee. In addition, first and second alternates are elected for one year each. The newly elected alternates of the county committee are 1st alternate, Robert Mast of Dexter and 2nd alternate, Lloyd Grau of Chelsea.

The ASC, farmer-committee system is unique. No other group of citizens has so direct a voice in developing and running government programs. Farmers eligible to take part in programs administered by the committee first elect community committeemen, who in turn elect county committeemen. While the county committee is in actual charge of administering the programs locally, including expenditures of federal funds, the community committeemen lend operating assistance where needed and are particularly responsible for keeping their neighbors informed about the programs available.

The elected committeemen are not federal office holders. Congress holds the Department of Agriculture responsible, and the Department in turn relies on the judgment and leadership of the locally elected farmers and the county office employees. The county office serves as the headquarters for farmer business connected with program participation.

Major ASC activities in Washenaw county include the Feed Grain Program, the Wheat Program, the National Wool Program, Price Support Loans, Storage Facility Loans, the Cropland Adjustment Program and the Rural Environmental Assistance Program.

A list of the new community committeemen follows.

LYNDON DEXTER—L. Duane Noah.

WANT ADS

ELECTRICAL WIRING of all types New and rewiring. Ph. 426-4855. x20tf

FOR SALE—Horse feed and horse feed pellets. Cole's Elevator Co., Inc., Gregory, Phone 498-2735. x31

ROBERT PATRICK for home improvement, building and maintenance. Ph. 428-8601. 45tf

THANK YOU

We wish to say thanks to our wonderful friends of Chelsea Baptist Church for making our Christmas a merry one. Also for their prayers during our illness and stay in the hospital. God Bless their homes with peace, joy and love.

Sincerely,
Mr. and Mrs. Charles Risner

CARD OF THANKS

We wish to express our sincere thanks to our friends, neighbors, and all who brought us comfort through their many expressions of sympathy and understanding in our bereavement.

The family of
Thomas C. Smith.

CARD OF THANKS

Thank you to all our friends and relatives for the flower offerings, memorials and food brought in. To Chelsea Rebekah Lodge No. 130, Past Noble Grand Club, World-Wide Circle, to the Rev. Siebert for his comforting words and to the Burghardt Funeral Home. Mrs. Wilbert Breitenwischer. Mr. and Mrs. Robert Breitenwischer. Mr. and Mrs. Glenwood Britten.

chairman; Grover Coffey, Jr., vice-chairman; Malcolm J. Reinhardt, member; Dean Clark, 1st alternate; Orson A. Beeman, Jr., 2nd alternate.

Webster—Donald Baldus, chairman; Paul Kleinschmidt, vice-chairman; Robert Mast, member; John N. Heller, 2nd alternate.

Northfield—Kenneth Zeeb, chairman; LeRoy Braun, vice-chairman; Hollis Kapp, member; David Maier, 1st alternate; Robert Lealand, 2nd alternate.

Salem-Superior—Lauren Geiger, chairman; Stanley Gill, vice-chairman; Ronald Patrick, member; Drayton Cort, 1st alternate; Curtis Hamilton, 2nd alternate.

Sylvan—Lloyd Grau, chairman; John Brooks, vice-chairman; Loren Heller, member; Norman Hinderer, 1st alternate; Roy Broessamle, 2nd alternate.

Lima—Arthur Barth, chairman; Harold Trinkle, vice-chairman; Lloyd A. Boyce, member; Keith Bradbury, 1st alternate; Don Lauer, 2nd alternate.

Selo-Ann Arbor—Edwin Egeler, chairman; Harold Reiz, vice-chairman; Robert Braun, member; Ormond Kapp, 1st alternate.

Sharon—Donald Irwin, chairman; Lowell Spike, vice-chairman; Douglas Kennedy, member; Gerald Jacob, 1st alternate; Ellis Pratt, 2nd alternate.

Freedom—Luther Schaible, chairman; Stephen Bristle, vice-chairman; Dennis Engelbert, member; Simon Girbach, 1st alternate; LeRoy Heller, 2nd alternate.

Lodi—Wilbert Schaible, chairman; Otto Bredernitz, vice-chairman; John Marshall, member; Elmer Grob, 1st alternate; Arnold Haebach, 2nd alternate.

Pittsfield—Robert Morton, Jr., chairman; Wilbert Dible, vice-chairman; Warren Rentschler, member; Orrin Girbach, 1st alternate; William McCalla, 2nd alternate.

Ypsilanti-Augusta—Glenn H. Rowe, chairman; David Dejanovich, vice-chairman; Ernest Karnatz, member; Donald Mull, 1st alternate; Leonard Karnatz, 2nd alternate.

Manchester—Loren Trolz, chairman; Maynard Leach, vice-chairman; Frank Walkow, member; Emmett Noggle, 1st alternate; Edward Wisner, 2nd alternate.

Bridgewater—Leonard Dayss, chairman; Lloyd Hughes, vice-chairman; Stanley Poet, member; William Klager, 1st alternate; Maynard Kidd, 2nd alternate.

Saline—William Lutz, chairman; Owen Zahn, vice-chairman; Robert Girbach, member; Robert Hammond, 1st alternate; Herman Marion, 2nd alternate.

York—Russell Wanty, chairman; Raymond Jorgensen, vice-chairman; Fred Schottenhelm, member; Harold Holcomb, 1st alternate; Edwin Lathers, 2nd alternate.

Food specialists predict that nearly 80 percent of the foods you serve in 1980 will be partially or completely prepared outside your home. Mrs. Beckman says. More groceries will be pre-cooked, frozen or instantized, and you'll buy more baked goods and take-out foods such as pizzas, chicken and hamburgers than you do today.

Snacks, sweets and soft drinks will be fortified with essential nutrients. Other foods will contain protein and carbohydrate supplements as well as the usual added vitamins and minerals.

Your grocery cart and dinner table are destined for change during the coming decade, according to Michigan State University Consumer Marketing Specialist Maryann Beckman.

Food specialists predict that nearly 80 percent of the foods you serve in 1980 will be partially or completely prepared outside your home. Mrs. Beckman says. More groceries will be pre-cooked, frozen or instantized, and you'll buy more baked goods and take-out foods such as pizzas, chicken and hamburgers than you do today.

Snacks, sweets and soft drinks will be fortified with essential nutrients. Other foods will contain protein and carbohydrate supplements as well as the usual added vitamins and minerals.

Pre-Cooked Foods
Will Increase
In Popularity

Your grocery cart and dinner table are destined for change during the coming decade, according to Michigan State University Consumer Marketing Specialist Maryann Beckman.

Food specialists predict that nearly 80 percent of the foods you serve in 1980 will be partially or completely prepared outside your home. Mrs. Beckman says. More groceries will be pre-cooked, frozen or instantized, and you'll buy more baked goods and take-out foods such as pizzas, chicken and hamburgers than you do today.

Snacks, sweets and soft drinks will be fortified with essential nutrients. Other foods will contain protein and carbohydrate supplements as well as the usual added vitamins and minerals.

Pre-Cooked Foods
Will Increase
In Popularity

Your grocery cart and dinner table are destined for change during the coming decade, according to Michigan State University Consumer Marketing Specialist Maryann Beckman.

Food specialists predict that nearly 80 percent of the foods you serve in 1980 will be partially or completely prepared outside your home. Mrs. Beckman says. More groceries will be pre-cooked, frozen or instantized, and you'll buy more baked goods and take-out foods such as pizzas, chicken and hamburgers than you do today.

Snacks, sweets and soft drinks will be fortified with essential nutrients. Other foods will contain protein and carbohydrate supplements as well as the usual added vitamins and minerals.

Pre-Cooked Foods
Will Increase
In Popularity

Your grocery cart and dinner table are destined for change during the coming decade, according to Michigan State University Consumer Marketing Specialist Maryann Beckman.

Food specialists predict that nearly 80 percent of the foods you serve in 1980 will be partially or completely prepared outside your home. Mrs. Beckman says. More groceries will be pre-cooked, frozen or instantized, and you'll buy more baked goods and take-out foods such as pizzas, chicken and hamburgers than you do today.

Snacks, sweets and soft drinks will be fortified with essential nutrients. Other foods will contain protein and carbohydrate supplements as well as the usual added vitamins and minerals.

Pre-Cooked Foods
Will Increase
In Popularity

Your grocery cart and dinner table are destined for change during the coming decade, according to Michigan State University Consumer Marketing Specialist Maryann Beckman.

Food specialists predict that nearly 80 percent of the foods you serve in 1980 will be partially or completely prepared outside your home. Mrs. Beckman says. More groceries will be pre-cooked, frozen or instantized, and you'll buy more baked goods and take-out foods such as pizzas, chicken and hamburgers than you do today.

How To Re-Use Gift Boxes, Cans

Don't be too quick to throw out those good boxes or cartons that hold your family's Christmas gifts—you can make them into handsome containers for everything from hair rollers to sewing materials, not forgetting the canisters and cookie tins you can make out of those plastic-lidded coffee cans!

Cover your boxes and coffee cans with self-adhesive plastic, re decorate them with braid or tape, and label them with cut-out letters. It's easy to do with self-stick plastic — just make sure surface of box or tin is clean and dry. Then cut your plastic to fit, allowing for an overlap at seams or edges, and press it down smoothly. Or you can use fabric or gift

paper, which you'll have to glue on.

It's a great way to "recycle" your boxes and cans — and you'll have attractive containers for all sorts of things, in kitchen, bathroom, or at desk or phone.

You can make a pretty pencil jug out of a juice can, and never again have to say, "Wait till I find a pencil," while you're talking on the phone!

In Chile
Unique among Christmas customs in Chile is a grand fiesta that centers around horse racing.

Only one of every 100 Michigani citizens operates a farm.

TODAY'S THOUGHT

By LOUIS BURGHARDT

How often during the past year have you heard it said, "I'd like to do it, but I don't dare because . . . ?" Anticipation was ignited but accomplishment was blighted through uncertainty, fear or indecision.

Accomplishment requires a start, a beginning. And the beginning is in the mind. No other place. Thinking about doing something is one thing. Doing it is another thing. When you think of it, there is a lot of truth in what Samuel Johnson said, "Nothing will ever be accomplished if all possible objections must first be overcome." And in what Dag Hammarskjold said, "It is when we play safe that we create a world of utmost insecurity." Accomplishment can only occur when the effort is made. Success is only achieved by those who try; risks notwithstanding.

With a New Year facing all of us we sincerely say "Happy New Year" to you . . . We especially mean . . . Happy Anticipation, and above all, Happy Accomplishment" to you . . . BURGHARDT FUNERAL HOME, 214 East Middle St., Chelsea, Mich. Phone 475-1551.

SPECIALS

ECKRICH SMORGAS-PAC

Lunch Meat, 1-lb. pkg. 89c

U. S. NO. 1 MICHIGAN

Potatoes . . . 10-lb. bag 50c

15-OZ. BAG LAY'S

Potato Chips 57c

NABISCO

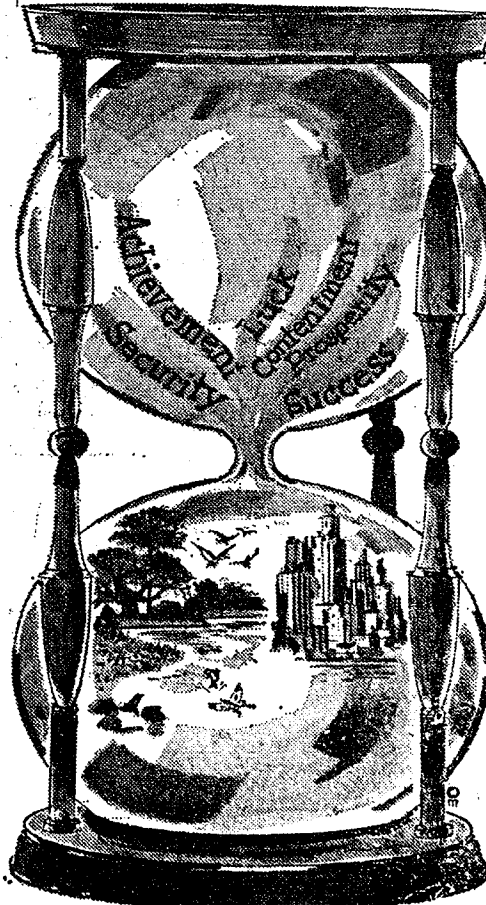
Snack Crackers, 2 pkgs. 77c

May 1973 Bring You
Peace, Health and Happiness

KUSTERER'S

FOOD MARKET

DIAL 475-2721 WE DELIVER



all the best for
the coming year

And never-ending happiness for
everyone. Thanks for your kindness.

DAIRY QUEEN BRAZIER

BOB and JOHN NIEHAUS
and Dairy Queen Employees

— FOR SALE — IMMEDIATE OCCUPANCY



ONLY \$35,500
(including the lot)

NEW 3-BEDROOM TRI-LEVEL

- ★ 2-Car Attached Garage
- ★ 1 1/2 Baths
- ★ Fully Carpeted
- ★ Range, Refrigerator, Dishwasher
- ★ Finish Graded
- ★ Complete with Storms & Screens
- ★ Well and Septic

Appointments
At Your Convenience
Office Hours: 9-5
12290 Jackson Rd., Chelsea

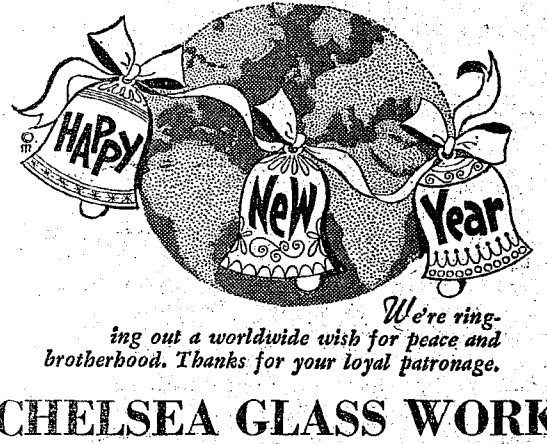
OFFICE PHONE 475-2828

OFFICES IN CHELSEA AND BRIGHTON



Time for a change
Hope this New Year weighs in with happiness for all. To all, thanks,
Fred's Standard Service

Tell People You Read It in The Standard!



HAPPY NEW YEAR
We're ringing out a worldwide wish for peace and brotherhood. Thanks for your loyal patronage.
CHELSEA GLASS WORKS



MAY ALL YOUR WISHES COME TRUE
Hope this coming year is a charmer. Our sincere thanks to all our patrons.
Murphy's Barber Shop
DAVE - WALT



Peace and Brotherhood
It's our fond pleasure to greet friends and neighbors at the start of the New Year. For your patronage we are grateful.
House of Orient Hair Stylists

Labor Relations Hold Key to U.S. Economic Progress During 1973

(Continued from page one)

place the one just expiring. Bargaining will be due thereafter in rubber, cement, construction, apparel, retail trade, services, electrical manufacturing, and foods.

Most important, however, are negotiations involving the Teamsters and United Auto Workers. The fact that both of these significant contract expirations will be quite close together is disturbing, since industrial production could plummet sharply for an indefinite period if either of both groups should strike.

Inflation—Grave or Tolerable?

Prospects for 1973 hinge so importantly upon the inflation threat that an early examination of this subject seems appropriate. There are two types of inflation, monetary and price. In trying to pull the economy out of its recent recession, the monetary authorities opened the spigot and increased the money supply. They accomplished their objective, and their recent actions have been more moderate. In 1973, therefore, we can look for the monetary officials to "lean against the wind" whenever it becomes necessary to quell any fresh threat from inflationary forces. But unless price (and wage) inflation commences to slip out of control, it is not likely that the severe tightening of money and credit which precipitated the 1968-69 credit crunch will be repeated.

This does not mean we have put inflation entirely at rest. Some price and wage inflation seems unavoidable in the year ahead; the primary question is just how severe it will be. Determining factors will be the behavior of labor, management, and the administration. If labor is aggressive and adamant in its demands and if management makes little or no attempt to hold costs to a reasonable rate of increase, the seeds will be sown for a potentially dangerous crop of inflation of the cost-push type.

What Will the Administration Do?

The Babson staff foresees some sharp jawboning by the Administration to convince labor and management that they must cooperate in keeping wage and price increases within tolerable range. Should such moral suasion fail, however, there is always the last resort: Price and wage controls far more restrictive and of greater scope than the partial curbs and guidelines we have been operating under for about a year and a half. With such stringent anti-inflation curbs, neither labor nor management or the consumer really benefits or is happy. Hence, we are hopeful that the pending labor negotiations in pattern-setting fields will be resolved with only moderate price inflation and without business stoppages.

If price inflation should be held to a walk in the early months of the new year, there is a good chance that controls will be modified and eased. Although it would be unrealistic to expect total cessation of anti-inflation controls in 1973, even some relaxation would have a positive impact on public confidence. Over-all, we are hopeful that price and wage hikes can be kept to around 6 percent in the coming year, leaving the normal productivity gain of 3 percent to 3.5 percent per annum as a partially counterbalancing influence.

The Administration itself will be in the forefront of the inflation battle. While it would be overly ambitious to look for a balanced

federal budget in either fiscal 1973 or fiscal 1974 (portions of both fall in the calendar year 1973), the Nixon Administration will aim for a moderate budget deficit by impounding funds allocated for certain purposes.

Industrial Production

Allowing for a reasonable labor climate with some disruptions of brief duration, the staff of Babson's Reports feels that industrial production can post a gain of 5 percent in 1973 over the 1972 average. This would be in terms of physical volume of output and not subject to inflationary factors. This rate of increase would amount to somewhat less than that registered during 1972.

On the other hand, the increase in industrial activity should be spread over a broader base in terms of industries participating. There should also be some shift in leadership. For example, the production of automobiles and trucks which did yeomen's work in pulling the economy upward these past two years may well level off, but the hitherto lagged capital-goods sector will come on strong. Other lines which are expected to contribute to the advance in industrial production include paper and pulp, containers, instruments and controls, machine tools, apparel, and both military and consumer electronics.

Gross National Product

It is the opinion of the Babson staff that through the combination of anticipated higher prices and increased output, the nation's 1973 Gross National Product in current dollars should post an advance approximating 9 percent over 1972, a gain of about the same magnitude as that seen in the year just ended. In constant dollars (deflated basis), with 1958 as the base period, we expect a year-to-year increase of about 4 percent compared with 5 percent for 1972. This smaller rate of progress points up the fact that general business in 1973 will lack on further gains but not with the same degree of vigor.

Two aspects of economic activity we think will be prominent in enabling 1973 to chalk up a climb in business, and hence in GNP, are in the private sector of the economy. These are personal consumption expenditures and private domestic investments. However, state and local demand for goods and services, betterment in the nation's foreign trade balance, and the unavoidable updating of the nation's defense capabilities will also lift the GNP.

World Peace and Trade

By the time this Annual Forecast is published, there could already be a cease-fire agreement for the Vietnam war. In any case such a truce should not be far off. How long such a cooling-off arrangement will last, however, is indeterminate. We are hopeful that this forward step can be followed by negotiations leading to a permanent peace treaty. Even if a ceasefire is achieved, but fails to hold, any resumption of fighting will presumably take place without American forces. Hopefully, settlement in Vietnam may be only part of a favorable peace package which will incorporate agreements to maintain the integrity of all other Southeast Asian nations.

It is the conviction of Babson's Reports that there will be no World War III in 1973. There may well be more internal strife

in the emerging nations of Africa and other underdeveloped countries of the world where the climate for leadership is still a partial vacuum and thus invites struggle for domination. Similar conditions also exist in portions of South and Central America. It is to be hoped, however, that the expected redirection of U. S. foreign policy and assistance will include a shift back to Latin America in time to stave off serious trouble there. In the Middle East no full-scale war is likely in 1973, but the area will unfortunately continue to teeter on the brink of outright conflict.

The commercial transactions achieved between this country and Russia and Red China barely scratch the surface of the trade potential which exists on an international scale. We forecast an increase in foreign commerce for the United States in the new year, involving more industry groups.

Stupendous though the potential may be, we can tap only a tiny fraction of the basic markets. Iron-curtain countries simply do not have enough dollar holdings or trade credits. Sales made on a credit basis require tedious negotiations to establish terms for such transactions. Eventually, however, the world-wide revamp of the international monetary system will result in some improvement in this situation. But the solution will not come in 1973. Nonetheless, there should be a better showing in our foreign trade balance and a less horrendous deficit in our annual international balance of payments.

Good Year for Farmers

The step-up in grain exports this past year has stiffened agricultural commodity prices materially, and 1972 is winding up as one of the best years in history for the nation's farmers. Realized net income could reach \$18.8 billion, a total which would strip the previous peak of \$17 billion reached back in 1967. Farm income next year should hold near this all-time record level. Domestic demand for agricultural products will remain strong, while exports are expected to rule on the upside. Farmers are already "champing at the bit" to start tilling and planting 1973's spring crops. The farm-equipment market is booming, and demand for fertilizer and seed will be brisk. Farm real estate prices have also strengthened.

Bright Consumer Psychology

All told, the nation's consumers can look forward to a good year in 1973. There will be some dissatisfaction over prices as well as occasional tremors among work-

ers unsettled by labor-management confrontations, but the over-all atmosphere will be heartening. Employment should move above the record rate already achieved during 1972. Already the "Help Wanted" newspaper sections are reflecting an increase in numbers of job openings.

On the other hand, unemployment will shrink only a trifle from the current 6 percent of the civilian labor force, possibly reaching the Administration's target of 5.5 percent. This is scarcely satisfactory to labor leaders, but it must be recognized that it is difficult to reduce jobless totals—even when employment is on the rise—if there is a massive influx into the labor force of young people and mothers seeking parttime or fulltime work. And this will be the case during 1973.

As we said earlier, wage rates will climb further in the year ahead. The pattern for raised and fringe benefits for the ensuing three years may well be determined by contracts inked in the key trucking, auto, and construction industries in the new year. With multi-year agreements usually calling for the lion's share of the over-all increase in the first year, average wage rates in American industry will show a significant rise in 1973, tempered somewhat by whatever controls are in effect. All of this will mean an upward push in both gross and disposable personal incomes.

Spending Will Rise

The combination of full employment, soaring wage rates, and new highs in personal income will, of course, put consumers in a spending mood. For that reason the staff of Babson's Reports looks for a substantial rise in consumer spending for 1973. The continuing advance in consumer expenditures will be spurred to some degree by a decline in the rate of savings. The trend toward putting away a smaller percentage of disposable income has been in evidence since the third quarter of 1971, after hitting a peak in the preceding quarter when consumers channeled 8.6 percent of their disposable income into savings. For the full year 1971 the savings rate was 8.2 percent but we estimate the 1972 figure will prove to have been reduced to 6.6 percent.

With little chance for much reduction in food prices and with consumption per capita still climbing, a fair portion of the increase in personal incomes will go for food and beverages. Consumers will also spend more for eating away from home. With new housing starts in 1972 holding up longer than was earlier expected, furniture and home furnishings are likely to remain strong areas of buyer interest.

Purchases of new autos were extremely heavy during the bulk of the past year, and there is no indication that this tendency will soon be reversed.

It should be noted, however, that we look for considerably less of an upward fillip in home furnishings and auto sales in 1973 than was seen in 1972. In both instances, it is getting late in the upward phase of the selling cycle. We do expect, however, quite positive gains in consumer spending for (Continued on page seven)



It's time for "Auld Lang Syne," and to wish good friends and neighbors a New Year so good it'll "ne'er be forgot." Our gratitude to all.

Cavanaugh Lake Store
BILL - HAZEL - JIM - BEV



Smith's Service Station
Brad - George - Tom - Ron - Ed

Tell People You Read It in The Standard!



New Year Greetings

THE AIR RINGS WITH EXCITEMENT AT THE DAWNING OF A NEW YEAR, MAY THE DAYS AHEAD HOLD PEACE AND HAPPINESS FOR ALL.

MEABON'S TV, FURNITURE & APPLIANCE
LEON and ESTHER



As we bid farewell to the old year and celebrate the arrival of the new, we pause to add a note of thanks to all.

WESTERN AUTO

CLARENCE - THELMA - EARLINE



Old-Fashioned New Year Greetings

Crank 'er up and steer into the year with a full tank of our high-test wishes, and gratitude.

FARMERS SUPPLY CO.
ANTON - DOROTHY - ALAN - EDDIE

Labor Relations Is Key

(Continued from page six)
time activities and prod-
and for apparel and acces-
sories.
Capital Expenditures
business capital expenditures

will help to stimulate the economy
during 1973, but not with the same
potency as in previous business
booms. It is probable, in fact,
that a good chunk of capital spend-
ing will be not for increased pro-

ductive capacity but for items of
high social priority.
Most firms will be laying out
more money to comply with anti-
pollution regulations, and compa-
nies in the oil and gas industry
will expend huge sums in the
search for new reserves. Major
gas distributors are so hard-
pressed for fresh supplies of nat-
ural gas that they are advancing
millions of dollars to help pay for
exploration and development costs
in exchange for the right to pur-
chase a major part or the entire
output of a given area. All in all,
business capital expenditures in
1973 could show a gain just about
matching the 10 percent marked
up during the past year.

Interest Rates—Bond Market
Since the consumer will be
spending more and business will be
building up inventories and pour-
ing out more funds for capital-
equipment programs, there will in-
evitably be some upward pressure
on interest rates. But we stress
once more that we do not antici-
pate another traumatic credit
crunch such as occurred during
the closing years of the 1960's.
The brunt of any interest-rate
rise is likely to come at the
short end of the money-rate scale,
with only a moderate firming of
long-term rates.

Keep in mind that the total of
new housing starts will probably
ease a bit in 1973. Moreover, cor-
porations are generally in good fi-
nancial condition after building up
their resources over the past two
years with the aid of the invest-
ment tax credit. The Babson staff
looks for corporate profits after
taxes to go up about 12 percent
in the new year compared with
16 percent in 1972. Even this
smaller gain, however, coupled
with the freeze on corporate divi-
dend disbursements—will enhance
business liquidity.

One area of danger in the mon-
ey-rate picture may be traced to
the government's doorstep. The U.
S. Treasury is slated for fairly ac-
tive refinancing in 1973, and the
unusual and unexpected tax re-
ceipts that have come in during
1972 through over-withholding will
not be seen in the new year. Whether
the Treasury's debt-manage-
ment efforts will pose a problem
depends on inflation prospects. If,
as now seems to be increas-
ingly accepted, the general public
feels that inflation is being re-
strained, the federal refinancing
projects are likely to occur with-
out undue pressure on interest
rates.

Hence, bond prices will probably
show sporadic signs of softness in
the short to intermediate sectors
of the maturity scale. But on the
long-term end, prices should be
generally well maintained. In gen-
eral, 1973 should offer ample op-
portunity to make selected pur-
chases of bonds and preferred
stocks of good quality for invest-
ors who need to nail down a fair
amount of fixed income from their
investments.

Wherever possible, however,
some inflation hedge should be
sought, even to the point of sacri-
ficing a little income on a portion
of investment capital. This part
of investment funds can be placed
in some attractively priced con-
vertible debentures and convertible
preferred stocks.

Bigger Tax Bite?
The outcry for tax reform, the
staggering projected federal bud-
get deficit, and the need for help
at state and local levels indicate
that somewhere along the line in
1973 there must be a heavy tax
wallop. The staff of Babson's Re-
ports does feel, however, that by
closing tax loopholes of the more
glaring sort and putting some re-
straints on public spending, the
federal government can avoid an
outright increase in both corporate
and personal income taxes in the

1972 Events in Review

(Continued from page one)

owned the Miller Funeral Home,
now Burghardt Funeral Home.
20—Kiwanis Club celebrated its
48th year in Chelsea.
24—Thieves took \$8,000 in art
objects from the home of George
Pluck, 8330 Waterloo Rd.
24—The first annual "Hockey
Awards Night" of the Chelsea
District Hockey Association was
held.
28—Cal Summers, chief engineer
at Federal Screw Works, retired
after 24 years. Alfred Weinmann,
also an employee at Federal Screw
Works, retired after 43 years.
30—Holy Week celebrations be-
gan in Chelsea-area churches.
31—The Chelsea High baseball
team travelled to Ft. Lauderdale,
Fla., to participate in a baseball
school and camp.

April...

1—Chester gas station on S.
Main St. was robbed.
1—Several hundred young-
sters turned out for an Easter Egg
Hunt sponsored by the Chelsea
Jaycees.
1—Lima, Sylvan, Dexter, and
Lyndon townships all approved
budget increases at their annual
meetings.

coming year, over and above the
social security tax hike that is al-
ready scheduled to take effect
Jan. 1, 1973.

Stock Market Outlook

The stock market during 1973
will have three powerful factors in
its corner: (1) The element of
peace; (2) the generally healthy
economic climate; and (3) the de-
cisive bulding of the 1,000 mark
by the Dow Jones Industrial Av-
erage which is whetting the in-
vestment appetite. These are con-
siderations that tend to stiffen in-
vestment confidence substantially.
On the assumptions that
corporate profits can post anoth-
er gain during the coming year
and that inflation can be prevent-
ed from running away, the Dow
Jones Industrial Average can be
expected to work into still higher
territory over the next 12 months.
The possibility of a move past the
1,100 mark, to even a challenge of
the 1,200 level, should not be ruled
out. However, there may not be a
"smooth jet flight" for the stock
market, if only because of the
overhanging danger of labor trou-
bles which will threaten for vir-
tually the entire year ahead.

Nevertheless, barring an unpre-
dictable major adverse develop-
ment, many of the stocks which
have been in the doldrums will
have an opportunity to catch up
with the parade. Among the
groups that can give a good ac-
count of themselves in 1973 are
those related to the energy crisis;
the reawakening laggards such as
steels, chemicals, and insurance
issues; and those which stand to
benefit most from the increase in
business capital spending and
stepped-up foreign trade. The in-
tense atmosphere along the labor
front in the new year could also
attract investors to the stocks of
concerns dealing in equipment
that would cut back excessive la-
bor costs.

Promising though the stock mar-
ket outlook may be at this tran-
sition period—1972 into 1973—the
staff of Babson's Reports is of
the opinion that investors should
employ a healthy measure of con-
servatism in their investment
moves. Resolve, for instance, not
to chase stocks which have already
gone whizzing upward; try to op-
erate on a sensible investment
game plan. Give due consideration
to the fundamental quality of in-
vestment selections and to secur-
ing at least a reasonable degree
of diversification for your por-
tfolio. In addition, keep on hand
some investment reserves at all
times.

4—Mike Eubanks was elected
president of the Chelsea Jaycees.
7—The school board approved
the use of school facilities for the
summer production of "The Sound
of Music."

12—Chelsea High track team
won the league dual meet against
Tecumseh.

13—Chelsea High School Choir
placed third in the International
Festival of the Americas held in
Nassau, the Bahamas.

15—David P. Kiemer, Chelsea
High school student, placed sec-
ond in the Senior Division of the
14th annual Southeastern Michi-
gan Science Fair in Ann Arbor.

His winning entry was a Laser
Holography display.

16—Chelsea Police Department
marksmen took fourth place in the
tri-state shooting competition.

18—Bulldog track team defeated
Milan.

21—Tag Day was sponsored by
the National Honor Society at
Chelsea High to raise money for
scholarships.

22—A country and western barn
dance was organized by a Chelsea
High school club, We Care. Money
raised was donated to the Michi-
gan School for the Blind in Lans-
ing.

24—Chelsea Kiwanis Club hon-
ored the Police Department and
the Auxiliary Police at a dinner.

May...

1—Walter Brown named Na-
tional Director for Region J. of the
Michigan Jaycees.

2—Chelsea Bulldogs baseball
team rolled over Stockbridge.

2—Chelsea High track team
breezed by Dundee, 16:47.

8—The school millage election
was held.

11—A report on land use was
offered in the Mill Creek Park pro-
ject controversy.

12—The 1972 Band-O-Rama was
held at Chelsea High.

14—Chelsea Village Apart-
ment Complex was dedicated at
the Methodist Home.

16—Bulldogs baseball team won
the Southeastern Conference
championship.

18—Mrs. Timothy (Pat) White-
sally, 224 Jefferson, was named
chairwoman of the 1972 Commu-
nity Chest campaign.

18—The Chelsea High track
team finished second in the con-
ference meet.

20—The Chelsea Jaycees and
Jaycee Auxiliary held annual in-
stallation of officers.

20—Michigan Week activities
began as Michigan Week was pro-
claimed by village President A. E.
Fulks.

21—Community Boy Scouts
took part in the Troquois District
Boy Scout Spring Camporee.

22—Outstanding students at
Chelsea High received Citizenship
Awards from the Chelsea Kiwanis
Club.

23—Don Turner began his fourth
trip to Alaska.

25—Heidi Sprague began a tour
with the American Wind Sym-
phony Orchestra.

25—Thomas Wortley closed
his gas station after 44 years.

29—Annual Memorial Day pa-
rade was held with Dr. Gorton
Reithmiller delivering the prin-
cipal address at Oak Grove Ceme-
tery.

June...

1—Lloyd Bridges took over the
ownership of Spaulding Chevrolet.
1—Baccalaureate service was
held for the 1972 graduating class
of Chelsea High.

5—Chelsea Board of Education
approved a drug program for Chelsea
schools.

8—Chelsea High baseball
team moved into regional play.

13—Historic Inverness Inn
was bought by Mr. and Mrs. Matt
Hintzen of Half Moon Lake.

15—John H. Reed was named
Plant Manager for Dana's Chelsea
operation.

15—Daniel Murphy became a
partner with Charles M. Lancaster
in the Chelsea Drug Store.

15—Dr. Joseph V. Fisher left
Chelsea after practicing medicine
for 27 years to accept a teaching
position in South Carolina.

18—The Youth Horse Show,
sponsored by the Chelsea Jaycees,
took place at the Chelsea Fair-
grounds.

23—The first armed robbery in
Chelsea occurred. Bandits took
\$218.05 at gunpoint from attend-
ant Douglas W. McDonald.

24—Mark Montague, 19640 Ivey
Rd., won the 115-pound class cham-
pionship at the AAU Junior Olympi-
c Freestyle Wrestling Tourna-
ment.

25—Gary Montague, 19640 Ivey
Rd., was shot in the leg by a bandit
at the Ypsi-Ann Drive-in
Theater.

29—Robert Daniel Brown, 8636
Plainwell Dr., Gregory, crashed his
car into Chelsea Medical Center
clinic on his way there to seek
treatment for glass cuts.

July...

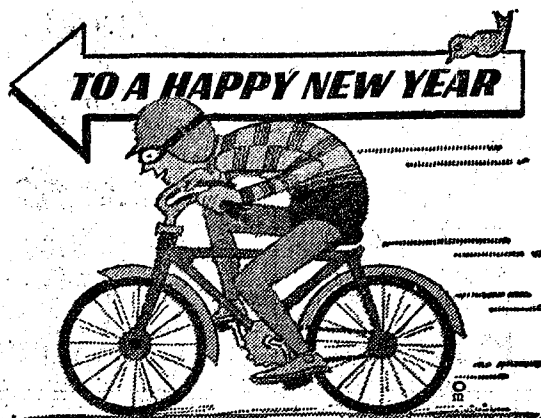
1—The official ambulance service
for Washtenaw county becomes
Fontana-Taylor Ambulance Service
of Platt Rd., Ann Arbor.

2—The First United Methodist
church on Park St. looks like new
as it welcomes its congregation
after undergoing a two-week face
lift.

4—Martin Straub of Madden Rd.,
a 1972 Chelsea High school gradu-
ate, is among the 15 Detroit area
citizens and organizations that re-
ceives national honors from Free-
dom Foundation at Valley Forge
during the annual July 4th Inde-
pendence Day Celebration at Green-
field Village, Dearborn.

6—A storm brews that threatens
to boil the water of Portage
and Base Line Lakes as the prop-

erty owners around those lakes
come up against the owners and
users of the Newport Beach Club.
6—Mrs. Emma J. Oesterle, wid-
ow of John M. Oesterle and a long-
time reporter for the Standard,
dies.
13—Determined women soft-
ball players and interested helpers
(Continued on page 14)



May all our loyal customers travel
happy roads. Thanks for your support.

Boyer Automotive Supply

Andy - Glenn - Dan - Pat



JOHN W. STEELE & SON

Heating and Air Co-nditioning - Sheet Metal

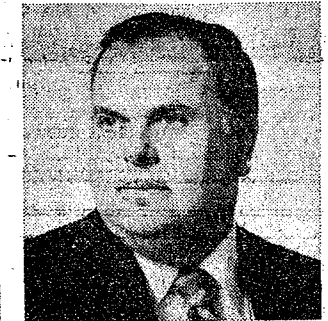
REAL ESTATE ADVICE

RESIDENTIAL PROPERTIES
COMMERCIAL - INDUSTRIAL
FARMS
VACANT LANDS

SPEAR & ASSOCIATES,

REALTORS

1935 Pauline Plaza 769-5750



ELLIS PRATT
428-8046



Welcome
the
New Year

Let the New
Year enter
your home
and fill
it with
Joy. Thanks.

State Farm Insurance Co.

Wallace Wood, C.L.U., Agent



Happy
new year...

There's just no masquerading about how
much we like having customers like you!
With pleasure, we wish you a happy year.

We Will Close Saturday, Dec. 30, at 2 p.m.
Open again Tuesday, Jan. 2, at 5:30 a.m.

CHELSEA RESTAURANT

ELLA McMILLAN



THE YEAR AHEAD...

Come on people, get together and bring
in the New Year with love
and brotherhood. Thanks to all, from us.

Hickory Ridge Farm Dairy



and thanks

We're building up to
wishes for hap-
piness and
prosperity in the
coming year
for all our friends.

Thompson's Pizzeria



May it hold the
beginnings of new friendships,
keep you in good health and heighten happi-
ness everyday of the year. Our pleasure is serving you

F & M FINE FOODS

BESSIE - KERMIT - LES - SANDRA
LANA - SUE - HATTIE - KAREN - DEBBIE

Community Calendar

Senior Citizens business meeting changed to Thursday, Dec. 28.

Starting Jan. 2, McKune Memorial Library will be open new hours. Hours: Monday and Tuesday, 10 a.m. to 5 p.m.; Wednesday, Friday and Saturday 12 to 5 p.m.; Monday, Wednesday and Friday evenings, 7 to 9 p.m.

Singles 25 and up: Join the Tuesday Night Singles Club at the UW-YMCA in Ann Arbor on Sunday night, Dec. 31, for our annual gala New Year's Eve party. Dancing from 8 p.m. to 1 a.m., with a buffet supper, to a fine five-piece band, all for only \$7 per person.

Chelsea Recreation Council winter sports program begins the first week in January. Monday nights: Golf lessons, Beach school, classes at 6:30 and 7 p.m.; Ladies conditioning, Chelsea High school, beginning at 8-10 p.m. Tuesday nights: Recreation night for men at Beach school, beginning at 6:30 p.m.; Thursdays: Tennis lessons, Beach school, 6 p.m.; Saturday mornings: Boys' basketball, at Chelsea High school, from 10 a.m. till noon; Girl's gymnastics, Beach school, from 10 a.m. until noon.

Hot meal service brought to home of elderly or disabled. Available seven days a week to people living in the Village of Chelsea. For more information call 475-2923 or 475-8014.

Parents Anonymous, a self-help group for parents who have child abuse problems and want to stop. For further information, call Sandy, 475-7519.

Inquiries regarding the Chelsea blood bank may be directed to Harold Jones in the event that Mrs. Dudley Holmes is unavailable, or to Mrs. Pauline McKenna, American Red Cross in Ann Arbor, 971-6300.

Pap tests are free for all area women, Tuesday mornings, at St. Joseph Mercy Hospital, Ann Arbor. Call American Cancer Society office, 668-8837, for appointment.

Humane Society of Huron Valley has dogs and cats for adoption and to be reclaimed by their owners. Phone 662-5585, or go there from 9 a.m. to 5 p.m. daily, Sundays, 1 p.m. to 5 p.m. 3100 Cherry Hill Rd., 1/2 mile south of Plymouth Rd. at Dixboro.

Regular Communication of Olive Lodge No. 156 F&AM, Tuesday, Jan. 2, 7:30 p.m.

American Legion and Auxiliary hospital equipment available by contacting Don O'Dell at 475-8249.

Churches Join in Key 73 Program

(Continued from page one)

efforts on praying at 60 each day for two weeks between Christmas 1972 and the first weekend in 1973.

At noon daily, Christians will be urged to stop whatever they're doing on their lunch break, during housework, eating in a restaurant, etc., and pause momentarily to pray that millions will be led to Christ through Key 73. Participants will be urged to ring church bells, sound sirens, toot horns, all to call attention to a continent-wide involvement in prayer. In addition, noon-time prayer groups will be established. Meeting places for prayer will be arranged in offices, factories, churches and schools.

Nearly \$700 Collected For Binet Hall Fund

The committee for the Binet Hall Fund at the Plymouth State Home and Training School has collected \$698.43.

Much of the money was brought in by a bake sale the committee held last week-end. The sale netted \$379.43.

The balance of \$319 was from cash donations or club and organizational contributions.

The canister drive is continuing. Proceeds will be reported in mid-January.

Judge Ross Campbell

Lectures New Judges

Circuit Judge Ross W. Campbell instructed newly-elected circuit and district judges on Pre-Trial Problems in Civil Cases at a three-day seminar ending Dec. 16, at Traverse City conducted by the Center for the Administration of Justice. Judge Campbell has previously lectured on evidentiary problems at a seminar for Upper Peninsula district judges which was also sponsored by the Center.

Telephone Your Club News To 475-1371.

DEATHS

Mrs. Benjamin Stapish

Lyndon Township Resident Dies at Area Rest Home

Mrs. Benjamin (Mary M.) Stapish, formerly of 21385 Waterloo Rd., died Dec. 22 at Cedar Knoll Rest Home, Grass Lake. She had been a patient at the home since June 17, 1970.

Mrs. Stapish was born Feb. 6, 1892 at Emmetsburg, Md. She married Benjamin Stapish June 15, 1909; he survives. The Stapishes lived in Detroit until Mr. Stapish retired from the Detroit Fire Department. They moved to Chelsea in 1929.

Surviving her, in addition, to her husband, are a son, Charles, of Chelsea; a daughter, Mrs. Nicholas (Mary) Koski of Royal Oak; seven grandchildren; 11 great-grandchildren; two sisters, Mrs. Ruth Long of Detroit, and Mrs. Lincoln (Ethel) Abram of Palmetto, Fla.; and one brother, Charles Stoner of Bradenton, Fla.

Mrs. Stapish was a member of St. Mary's Catholic church of Chelsea and the Altar Society of the church.

Funeral services were held Tuesday, Dec. 26, at 10 a.m. at St. Mary's Catholic church with the Rev. Fr. David Dupuis officiating. Burial followed at Mt. Olivet Cemetery. Funeral arrangements were made by the Staffan Funeral Home.

Mrs. Eva Schiller

Dies at Medical Center Following Brief Illness

Mrs. Eva M. Schiller, 11644 Jackson Rd., Dexter, died Dec. 24 at the Chelsea Medical Center after a brief illness.

Mrs. Schiller was born Sept. 30, 1902, in Washtenaw county.

Surviving her are two sons, Oramel, of Tipton; Marvin, of Chelsea; two daughters, Mrs. Kenneth (Pauline) Loud of Spring Arbor, Miss Donna Schiller of New York City; two brothers, Martin Steinbach of Chelsea, R. Leslie of Battle Creek; 11 grandchildren; and three great-grandchildren.

Funeral services were held at 1:30 Thursday, Dec. 28, at the Staffan Funeral Home with the Rev. Clive H. Dickinson officiating. Burial followed at Oak Grove Cemetery.

Personal Notes

Mrs. Floyd Gentner, 316 Jackson St., returned Dec. 27 after spending the Christmas holidays with her son and family, Mr. and Mrs. Duane Gentner and daughter, Lisa, of Hanover Park, Ill.

More than 29 million persons have visited Metropolitan Beach near Mr. Clemens since it was dedicated in June of 1951.



JULIUS REULE, a life-long resident of Chelsea, dates his career with Federal Screw Works back to 1928, when he was employed by M. J. Dunkle. He proudly shows a brush, inscribed with the name Chelsea Screw Works, to prove it. Federal Screw Works records his start as a screw machine operator in 1932. He has remained in that spot ever since, and is presently leader of the department. His leadership will come to an end as of Jan. 1, when he will retire. He is number one on the Screw Works' seniority list. Here he is pictured (middle) with Gene Hageman, left, vice-chairman of UAW Local 437, and Elwood Keezer, foreman.

Sen. Bursley Proposes New Formula for School State Aid

Michigan would no longer have "rich" and "poor" school districts, under a new state-aid proposal being promoted by Senator Gilbert E. Bursley (R-Ann Arbor). Addressing a Forum on Education in Michigan, jointly sponsored by Michigan State University and the State Department of Education, Bursley urged that State Aid be distributed in a manner guaranteeing local school districts "equal returns on equal effort."

Senator Bursley serves as chairman of the Senate Education Committee and Assistant Majority Leader of the Senate.

He has been the chief sponsor of a large portion of education reform legislation introduced in recent years.

"Contrary to what seems to be a widespread assumption, there is simply no way the Michigan legislature can guarantee meaningful and lasting property tax reduction," Bursley said.

"Such a guarantee requires constructive change, which can be accomplished only by a vote of the people."

"Without the means of assuring property tax reduction, it would hardly be reasonable for the legislature to impose a major income tax increase for the support of education."

"As an alternative, I suggest that we give the citizens of each school district a choice as to the type of taxes by which they wish to finance their schools."

"Each local school district should also be permitted to determine its own level of school spending, once essential minimums have been met."

He recently introduced a new State-Aid Bill, implementing the principles he was stressing.

His proposal would set 20 mills as the minimum local effort needed for adequate education, or its equivalent in a combination of millage and local income tax.

"There would be no legal pressure from the state demanding that this minimum effort be made," Bursley said.

"But each local school board would be authorized to levy, by its own vote, a rate of local income tax sufficient to bring the district up to the 20-mill level."

Wrestlers...

(Continued from page one)

back through consolation matches to take a fourth place medal in the 98-pound division. Kelly won three and lost two matches.

Chris Steele, 105 pounds, produced two pin victories before losing to the champion. Chris then pinned two more opponents to take a third-place medal. Tim Reed, 138 pounds, pinned two opponents and collected a third-place medal. Dennis Bauer, 155 pounds, lost his first match but came back through consolation matches to take a third.

Don Harmon, 185 pounds, was one of two entries in the freshman division. He won a second-place medal.

Other Chelsea wrestlers winning matches but not medals, were: Dave Clouse, 1-1; Doug Reed, 1-2; John Tandy, 2-2; and Don Bollinger, 2-2.

Other wrestlers from Chelsea in the tournament were: Steve Klink, Nick Keiser, James Boyer, Eric Prinzing and Kermit Sharp.

Chelsea finished 4-1 in dual meet action.

Winter Recreation Program...

(Continued from page one)

George McKeighan will be the instructor.

Men's recreation night will be held every Tuesday night at the Beach school gym. Classes will run from 6:30 to 8:30 p.m. starting Jan. 2.

A Women's conditioning class will be held from 8 to 10 p.m. on Monday evenings. Ladies, under the direction of Theresa Schreiner, will do exercises to records and then participate in an activity.

This class was extremely popular last year and the council hopes the interest will continue.

Tennis classes at three levels will meet Thursday evenings beginning Jan. 4. Beginners classes will be held from 6:30 to 7:30 p.m., intermediate classes from 7:30 to 8:30 p.m., and advanced classes from 8:30 to 10 p.m.

Persons interested in the tennis classes should contact June Winsans at 475-2654. Persons interest-

ed in other classes should contact Ken Larson at 475-2650.

Hidden Christmas Gift Disappears

Scrooge instead of Santa showed up at the home of Mrs. Robert Stauch, 101 S. Main St., Apt. 2, on Christmas eve.

Mrs. Stauch had hidden a Christmas present, a children's game called "Upset," in a niche in the hall leading to her apartment and one other on the floor. When Mrs. Stauch went out just after midnight to get the present to put under the tree, it was gone.

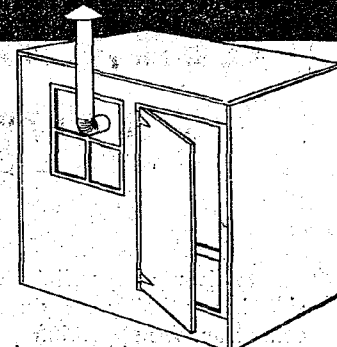
Ice skating and ice fishing are major winter attractions at Metropolitan Beach near Mt. Clemens, where fishermen catch perch along the canals, boat basins and on Lake St. Clair. For details phone 963-3022 or HO 3-4581.

How to Build a FISH HOUSE



FOR HOBBY and COMMERCIAL ICE FISHING

for fishing fun in the winter, keep snug in your own UPSON FISH HOUSE



FREE: Easy-to-follow building and assembly instructions. Practical and inexpensive to build with sturdy—lightweight—windproof and warm Upson All Weather Panels.

TOTAL MATERIALS \$23.65*

*Add for floor and window, if desired.

CHELSEA LUMBER



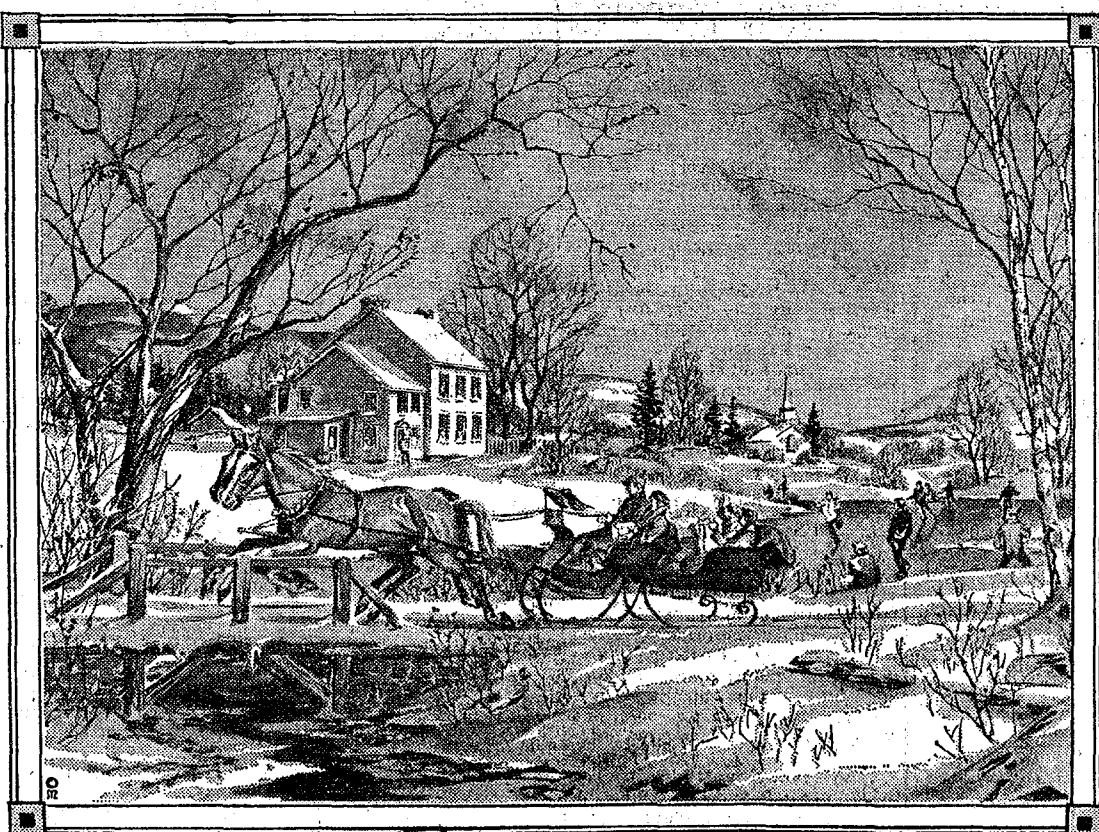
HAPPY NEW YEAR and BEST WISHES

Each New Year brings to us a renewed appreciation of old acquaintances and the value of close friendships. With a prayer of thanks for the good fortune bestowed upon us, we send our best wishes to all our patrons for the loyalty and trust they have tendered us. Thank you and Happy New Year!

We Will Close at Noon Saturday, Dec. 30

HEYDLAUFF'S

George, Mark, Matt, Steve Heydlauff - Lloyd Heydlauff
Norma Popovich - Vern Parks - Louis Foreman - Jerry Joseph
Dan Schnaidt - Dixie Wenk - Winston and Duane Boyer
Dave Buku - Debbie Shadoan



NEW YEAR Greetings

To our good friends and neighbors, we wish the very best in the coming New Year. May your days be replete with health, prosperity and the fulfillment of every endeavor. Let us vow to work together for the betterment of our community throughout the forthcoming year.

"The Friendly Store"



Sam and Joyce Johnson
George and Virginia Elkins
Georgia Collins

Ernie Hinderer
Carol Weir
Bart Wellnitz
Linda Carlson

Happy NEW YEARS Start Here

ELF
CANNED
POP
Assorted Flavors
12-Oz. Can **8c**



1101 M-52

CHELSEA

CLOSED NEW YEAR'S DAY

WE WILL CLOSE AT 5:30 P.M.
SUNDAY AND REOPEN ON
TUESDAY AT 7 A.M. AS USUAL

VALUABLE COUPON

SAVE \$1.00 WITH COUPON
SWIFT PREMIUM

CANNED HAM

9-Lb. Can **\$9.44**

With \$3.00 Purchase
LIMIT 1
EXPIRES DEC. 30, 1972

VALUABLE COUPON

SAVE \$1.00 WITH COUPON
SWIFT PREMIUM

CANNED HAM

5-Lb. Can **\$4.99**

With \$3.00 Purchase
LIMIT 1
EXPIRES DEC. 30, 1972

VALUABLE COUPON

SAVE 38c WITH COUPON

PEPSI-COLA

8 16-Oz. Btles. **99c**

With \$3.00 Purchase
LIMIT 1
EXPIRES DEC. 30, 1972

VALUABLE COUPON

SAVE 18c WITH COUPON

OXYDOL

49-Oz. **96c**

With \$3.00 Purchase
LIMIT 1
EXPIRES DEC. 30, 1972

VALUABLE COUPON

SAVE 36c WITH COUPON
HEINZ GREAT AMERICAN

SOUPS

5 Cans **89c**

With \$3.00 Purchase
Limit 5
Lesser Amounts Reg. Price
Expires Dec. 30, 1972

VALUABLE COUPON

SAVE 50c WITH COUPON
NESCAFE

INSTANT COFFEE

10-Oz. Jar **99c**

With \$3.00 Purchase
LIMIT 1
EXPIRES DEC. 30, 1972

VALUABLE COUPON

SAVE 48c WITH COUPON
GENERAL MILLS

SNACKS

3 Pkgs. **99c**

With \$3.00 Purchase
Expires Dec. 30, 1972

SWIFT PREMIUM
CANNED HAM 9-Lb. Can **\$9.44**

SWIFT PREMIUM
CANNED HAM 5-Lb. Can **\$4.99**

SAVE 38c WITH COUPON
PEPSI-COLA 8 16-Oz. Btles. **99c**

SAVE 18c WITH COUPON
OXYDOL 49-Oz. **69c**

HEINZ GREAT AMERICAN
SOUPS 5 Cans **89c**

NESCAFE INSTANT
COFFEE 10-Oz. Jar **99c**

ASSORTED GENERAL MILLS
SNACKS 3 Pkgs. **99c**

A MUST FOR SALADS

TOMATOES

Lb. **29c**

GOLDEN RIPE CHIQUITA
BANANAS 2 Lbs. **25c**

SWEET FLORIDA
GRAPEFRUIT Lrg. 36 Size 2 for **39c**

LOUISIANA
YAMS 3 Lbs. **59c**

SOLID CRISP
CABBAGE Lb. **10c**

GREEN ONIONS . 2 Bchs. **25c**

FRESH
Roasted Peanuts . . . 24-Oz. Bag **89c**

1/2 GAL. TROPICANA
Orange Juice . . 89c

1/2 GAL. OCEAN SPRAY
Cranberry Drink 89c

DEL MONTE
TOMATO JUICE . . . 46-Oz. Can **25c** SAVE 16c

ELF
PORK 'N BEANS . . . 15-Oz. Can **10c** SAVE 6c

JUICE
REALEMON . . . 32-Oz. **48c** SAVE 20c

JAYS
POTATO CHIPS . . . 11-Oz. Pkg. **39c** SAVE 16c

CHICKEN OF SEA
CHUNK TUNA . . . 6.5-Oz. Can **35c** SAVE 4c

ELF SALTINE
CRACKERS . . . **18c** SAVE 10c

U.S.D.A. CHOICE BEEF

Packed for Armour — Scotch Brand Fully Cooked

STANDING RIB ROAST

5 - 7 Rib Lb. **98c**

BONELESS HAM

Whole or Shank Half **99c**

14-16 Lbs. Lb.

USDA CHOICE BEEF
STANDING RIB ROAST . . 1-4 Rib Lb. **\$1.29**

USDA CHOICE OVEN READY FRESH
LEG 'O LAMB Lb. **\$1.09**

USDA CHOICE SHOULDER FRESH
LAMB ROAST Lb. **69c**

USDA CHOICE SHOULDER BLADE CUT
LAMB CHOPS Lb. **79c**

USDA CHOICE SHOULDER ROUND BONE
LAMB CHOPS Lb. **99c**

SWIFT ROYAL ROCK
TURKEYS 18-20 Lbs. Lb. **39c**

FRESH FROZEN FANCY GRADE A
GEESE Lb. **99c**

HYGRADE W. VIRGINIA THICK
SLICED BACON 1 1/2-Lb. Pkg. **\$1.59**

FARMER PEET'S BONELESS
BONANZA HAM Whole Lb. **\$1.29** Half Cut Lb. **\$1.39**

FARMER PEET'S BABY
BONANZA HAM 2-3 Lbs. Lb. **\$1.39**

HYGRADE W. VIRGINIA DELUXE
SEMI-BONELESS HAM Whole or Half Lb. **\$1.29**

HYGRADE SLICED
BOILED HAM 10-Oz. Pkg. **99c**

KNEIP LEAN
CORN BEEF ROUND Lb. **99c**

SWIFT PREMIUM BUTTERBALL
TURKEYS 20-26 Lbs. Lb. **49c**

LEAN MEATY SMALL SIZE
SPARE RIBS 1-3 Lbs. Lb. **79c**

WILLIE BULK STYLE
SAUERKRAUT Lb. **29c**

SWIFT'S PREMIUM SKINLESS

SWIFT PREMIUM SLICED

FRANKS

12-Oz. Pkg. **49c**

BACON

Lb. **89c**

ECKRICH
SMORGASPAK . lb. **99c**

FRESH GROUND ALL BEEF
HAMBURG . . . lb. **69c**

12-OZ. TIN FRESH
OYSTERS \$1.69

12-OZ. PKG. ECKRICH ALL BEEF
SMORGASPAK . . . **99c**

ASSORTED FARMER PEET
LUNCH MEATS . . lb. **89c**

LARGE SIZE
LOBSTER TAIL . . lb. **\$3.99**

ECKRICH REGULAR SLICED
BOLOGNA . . . lb. **\$1.09**

ECKRICH ALL MEAT FUN
FRANKS lb. **89c**

LARGE HEADLESS
SHRIMP lb. **\$1.99**

FARMER PEET'S FARMHOUSE
SLICED BACON . . . lb. **69c**

FRESH FROZEN
TURBOT FILLETS . . . lb. **69c**

BORDEN'S ELSIE
ICE CREAM 1/2 Gal. **59c** SAVE 34c

MICHIGAN
SOUR CREAM . . . Pint **29c** SAVE 20c

BORDEN'S
ELSIE STIX 12 Pak **39c**

BANQUET FROZEN FRIED
CHICKEN 2-Lb. Pkg. **\$1.19** SAVE 66c

POLLY QUALITY WHITE
BREAD 20-Oz. Loaf **16c** SAVE 6c

ALKA SELTZER . . . 36 Ct. Foil **88c**

Legal Notices

MORTGAGE SALE

Default has been made in the conditions of a mortgage made by HAROLD G. McFADDEN and SHERIAN R. McFADDEN, his wife, to CITIZENS MORTGAGE CORPORATION, a Michigan corporation, Mortgagee, dated January 7, 1971, and recorded on January 11, 1971, in Liber 1841, on Page 1, of the Washtenaw County Records, on which mortgage there is claimed to be due at the date hereof the sum of NINE THOUSAND SEVEN HUNDRED THIRTY-FOUR AND NO/100 DOLLARS (\$9,734.40), including interest at 7 1/2% per annum.

Under the power of sale contained in said mortgage and the statute in such case made and provided, notice is hereby given that said mortgage will be foreclosed by a sale of the mortgaged premises, or some part of them, to satisfy the debt, at the West entrance of the Washtenaw County Building, in the City of Ann Arbor, Washtenaw County, Michigan, at 10:00 o'clock, in the forenoon, on FRIDAY, the 26th day of JANUARY, 1973.

Said premises are situated in the Township of Ypsilanti, Washtenaw County, Michigan, and are described as: Lot 552, Subdivision of French Creek No. 1, a part of French Creek No. 1, Ypsilanti Township, Washtenaw County, Michigan, according to the plat thereof as recorded in the County Records, on Page 1, of the Washtenaw County Records. The length of the period of redemption from such sale will be six months.

Dated: November 27, 1972.

CITIZENS MORTGAGE CORPORATION, a Michigan corporation, Mortgagee.

Marion H. Crawford, Esq.,

Monaghan Campbell, Potts & McDonald,

1732 Buhl Building,

Detroit, Michigan 48226

901-0475. Dec. 21-28-Jan. 4-11-18

NOTICE OF MORTGAGE FORECLOSURE

Default having been made in the conditions of a certain mortgage executed by ROBERT E. BURG, deceased, and his wife, LORITA BURG, deceased, to FIRST FEDERAL SAVINGS AND LOAN ASSOCIATION OF DETROIT, a Michigan corporation, Mortgagee, dated October 1, 1971, and recorded on November 1, 1971, in Liber 1876, Page 1, of the Washtenaw County Records, on which mortgage there is claimed to be due at the date hereof the sum of \$20,776.93, including interest at 7 1/2% per annum.

For principal the sum of \$20,776.93, for interest the sum of \$69.91, and an attorney's fee as provided by law.

NOTICE IS HEREBY GIVEN that by virtue of the power of sale contained in said mortgage and the statute in such case made and provided, on THURSDAY, MARCH 22, 1973, at 10:00 o'clock in the forenoon, the undersigned, as trustee for the mortgagee, will sell at public auction, at the West entrance of the Washtenaw County Building, in the City of Ann Arbor, Washtenaw County, Michigan, (that being the building in which the Circuit Court for the County of Washtenaw is held), all of the premises described in said mortgage, and any interest therein, to the highest bidder for cash, at public auction, at the time of said sale, including interest at the rate of 7 1/2% per annum, as specified in said mortgage, with all legal costs and said attorney's fee. Said premises are situated in the City of Ann Arbor, Washtenaw County, Michigan, and are described as follows:

Lot 190, Arbor Oaks Subdivision, Number 3, City of Ann Arbor, Washtenaw County, Michigan, according to the plat thereof as recorded in Liber 19, of the Washtenaw County Records.

Washenaw County Records.

The period of redemption from said sale on foreclosure of said mortgage will expire six months from and after the date of said sale.

DATED: November 24, 1972.

FEDERAL HOME LOAN MORTGAGE CORPORATION, a Michigan corporation, Mortgagee.

Clark, Klein, Winter, Parsons & Prewitt,

Attorneys for Mortgagee,

1600 First Federal Building,

Detroit, Michigan 48226. Nov. 30-Feb. 22

MORTGAGE SALE

Default has been made in the conditions of a mortgage made by LARRY E. KIMBLE, a minor, by his guardian, LORITA KIMBLE, a minor, by her guardian, GRAHAM MORTGAGE CORPORATION, a Michigan corporation, Mortgagee, dated February 19, 1971, and recorded on April 9, 1971, in Liber 1853, on page 791, of the Washtenaw County Records, on which mortgage there is claimed to be due at the date hereof the sum of NINETEEN THOUSAND SEVEN HUNDRED EIGHTY-FOUR AND NO/100 DOLLARS (\$19,784.40), including interest at 7 1/2% per annum.

Under power of sale contained in said mortgage and the statute in such case made and provided, notice is hereby given that said mortgage will be foreclosed by a sale of the mortgaged premises, or some part of them, at public auction, at the West entrance of the Washtenaw County Building, in the City of Ann Arbor, Washtenaw County, Michigan, at 10:00 o'clock a.m., Local Time, on Friday, January 26, 1973.

Said premises are situated in the Township of Ypsilanti, Washtenaw County, Michigan, and are described as follows:

Lot 91, South Devonshire Subdivision, Ypsilanti Township, Washtenaw County, Michigan, according to the plat thereof as recorded in Liber 7, Page 48 of the Washtenaw County Records.

During the six (6) months immediately following the sale, the property may be redeemed.

Dated: December 14, 1972.

BLOOMFIELD SAVINGS BANK, a Michigan corporation, Mortgagee.

John A. Hird, Attorney

For Assignee of Mortgage.

Dec. 21-28-Jan. 4-11-18

NOTICE

Default having been made in the conditions of a certain mortgage made by HAROLD JOHNSON and MILDORA JOHNSON, his wife, to HANNAH REAL ESTATE EXCHANGE INCORPORATED, a corporation organized and existing under the laws of the State of Michigan, as mortgagee, dated July 31, 1961, and recorded August 2, 1961, in Liber 237, of the Washtenaw County Records, on which mortgage there is claimed to be due at the date hereof the sum of Ten Thousand and No/100 DOLLARS (\$10,000.00), including interest at 7 1/2% per annum, and no sum or sums of money or interest have been paid on said mortgage.

Under power of sale contained in said mortgage and the power of sale in said mortgage contained having become operative by reason of such default:

NOTICE IS HEREBY GIVEN, that on Tuesday, the first day of January, 1973, at 10:00 o'clock in the forenoon, at the South entrance of the County Building in the City of Ann Arbor, Washtenaw County, Michigan, that being the building where the Circuit Court for the County of Washtenaw is held, there will be offered for sale and sold to the highest bidder at public auction for the purpose of satisfying the amount due on said mortgage, together with the legal costs and charges of sale, including an attorney's fee allowed by law, the land and premises situated in the City of Ypsilanti, County of Washtenaw, State of Michigan, described as follows:

Lot one hundred fourteen (114), AINSWORTH PARK, City of Ypsilanti, Washtenaw County, Michigan, according to the plat thereof as recorded in Liber 4, Page 21 of the Washtenaw County Records.

During the twelve (12) months immediately following the sale, the property may be redeemed.

Dated: November 29, 1972.

PEOPLES FEDERAL SAVINGS AND LOAN ASSOCIATION OF DETROIT, a corporation organized and existing under the Home Owners' Loan Act of 1938 of the United States of America, by an instrument of assignment dated October 3, 1961, and recorded October 1, 1961, in Liber 984 of the Washtenaw County Register of Deeds Records, on Page 517, on which mortgage there is claimed to be due and unpaid at the date of this Notice, including principal and interest, the sum of Ten Thousand and No/100 DOLLARS (\$10,000.00), including interest at 7 1/2% per annum, and no sum or sums of money or interest have been paid on said mortgage.

Under power of sale contained in said mortgage and the power of sale in said mortgage contained having become operative by reason of such default:

NOTICE IS HEREBY GIVEN, that on Tuesday, the first day of January, 1973, at 10:00 o'clock in the forenoon, at the South entrance of the County Building in the City of Ann Arbor, Washtenaw County, Michigan, that being the building where the Circuit Court for the County of Washtenaw is held, there will be offered for sale and sold to the highest bidder at public auction for the purpose of satisfying the amount due on said mortgage, together with the legal costs and charges of sale, including an attorney's fee allowed by law, the land and premises situated in the City of Ypsilanti, County of Washtenaw, State of Michigan, described as follows:

Lot one hundred fourteen (114), AINSWORTH PARK, City of Ypsilanti, Washtenaw County, Michigan, according to the plat thereof as recorded in Liber 4, Page 21 of the Washtenaw County Records.

During the twelve (12) months immediately following the sale, the property may be redeemed.

Dated: November 29, 1972.

PEOPLES FEDERAL SAVINGS AND LOAN ASSOCIATION OF DETROIT, a corporation organized and existing under the Home Owners' Loan Act of 1938 of the United States of America, by an instrument of assignment dated October 3, 1961, and recorded October 1, 1961, in Liber 984 of the Washtenaw County Register of Deeds Records, on Page 517, on which mortgage there is claimed to be due and unpaid at the date of this Notice, including principal and interest, the sum of Ten Thousand and No/100 DOLLARS (\$10,000.00), including interest at 7 1/2% per annum, and no sum or sums of money or interest have been paid on said mortgage.

Under power of sale contained in said mortgage and the power of sale in said mortgage contained having become operative by reason of such default:

NOTICE IS HEREBY GIVEN, that on Tuesday, the first day of January, 1973, at 10:00 o'clock in the forenoon, at the South entrance of the County Building in the City of Ann Arbor, Washtenaw County, Michigan, that being the building where the Circuit Court for the County of Washtenaw is held, there will be offered for sale and sold to the highest bidder at public auction for the purpose of satisfying the amount due on said mortgage, together with the legal costs and charges of sale, including an attorney's fee allowed by law, the land and premises situated in the City of Ypsilanti, County of Washtenaw, State of Michigan, described as follows:

Lot one hundred fourteen (114), AINSWORTH PARK, City of Ypsilanti, Washtenaw County, Michigan, according to the plat thereof as recorded in Liber 4, Page 21 of the Washtenaw County Records.

During the twelve (12) months immediately following the sale, the property may be redeemed.

Dated: November 29, 1972.

PEOPLES FEDERAL SAVINGS AND LOAN ASSOCIATION OF DETROIT, a corporation organized and existing under the Home Owners' Loan Act of 1938 of the United States of America, by an instrument of assignment dated October 3, 1961, and recorded October 1, 1961, in Liber 984 of the Washtenaw County Register of Deeds Records, on Page 517, on which mortgage there is claimed to be due and unpaid at the date of this Notice, including principal and interest, the sum of Ten Thousand and No/100 DOLLARS (\$10,000.00), including interest at 7 1/2% per annum, and no sum or sums of money or interest have been paid on said mortgage.

Under power of sale contained in said mortgage and the power of sale in said mortgage contained having become operative by reason of such default:

NOTICE IS HEREBY GIVEN, that on Tuesday, the first day of January, 1973, at 10:00 o'clock in the forenoon, at the South entrance of the County Building in the City of Ann Arbor, Washtenaw County, Michigan, that being the building where the Circuit Court for the County of Washtenaw is held, there will be offered for sale and sold to the highest bidder at public auction for the purpose of satisfying the amount due on said mortgage, together with the legal costs and charges of sale, including an attorney's fee allowed by law, the land and premises situated in the City of Ypsilanti, County of Washtenaw, State of Michigan, described as follows:

Lot one hundred fourteen (114), AINSWORTH PARK, City of Ypsilanti, Washtenaw County, Michigan, according to the plat thereof as recorded in Liber 4, Page 21 of the Washtenaw County Records.

During the twelve (12) months immediately following the sale, the property may be redeemed.

Dated: November 29, 1972.

PEOPLES FEDERAL SAVINGS AND LOAN ASSOCIATION OF DETROIT, a corporation organized and existing under the Home Owners' Loan Act of 1938 of the United States of America, by an instrument of assignment dated October 3, 1961, and recorded October 1, 1961, in Liber 984 of the Washtenaw County Register of Deeds Records, on Page 517, on which mortgage there is claimed to be due and unpaid at the date of this Notice, including principal and interest, the sum of Ten Thousand and No/100 DOLLARS (\$10,000.00), including interest at 7 1/2% per annum, and no sum or sums of money or interest have been paid on said mortgage.

Under power of sale contained in said mortgage and the power of sale in said mortgage contained having become operative by reason of such default:

NOTICE IS HEREBY GIVEN, that on Tuesday, the first day of January, 1973, at 10:00 o'clock in the forenoon, at the South entrance of the County Building in the City of Ann Arbor, Washtenaw County, Michigan, that being the building where the Circuit Court for the County of Washtenaw is held, there will be offered for sale and sold to the highest bidder at public auction for the purpose of satisfying the amount due on said mortgage, together with the legal costs and charges of sale, including an attorney's fee allowed by law, the land and premises situated in the City of Ypsilanti, County of Washtenaw, State of Michigan, described as follows:

Lot one hundred fourteen (114), AINSWORTH PARK, City of Ypsilanti, Washtenaw County, Michigan, according to the plat thereof as recorded in Liber 4, Page 21 of the Washtenaw County Records.

During the twelve (12) months immediately following the sale, the property may be redeemed.

Dated: November 29, 1972.

PEOPLES FEDERAL SAVINGS AND LOAN ASSOCIATION OF DETROIT, a corporation organized and existing under the Home Owners' Loan Act of 1938 of the United States of America, by an instrument of assignment dated October 3, 1961, and recorded October 1, 1961, in Liber 984 of the Washtenaw County Register of Deeds Records, on Page 517, on which mortgage there is claimed to be due and unpaid at the date of this Notice, including principal and interest, the sum of Ten Thousand and No/100 DOLLARS (\$10,000.00), including interest at 7 1/2% per annum, and no sum or sums of money or interest have been paid on said mortgage.

Under power of sale contained in said mortgage and the power of sale in said mortgage contained having become operative by reason of such default:

NOTICE IS HEREBY GIVEN, that on Tuesday, the first day of January, 1973, at 10:00 o'clock in the forenoon, at the South entrance of the County Building in the City of Ann Arbor, Washtenaw County, Michigan, that being the building where the Circuit Court for the County of Washtenaw is held, there will be offered for sale and sold to the highest bidder at public auction for the purpose of satisfying the amount due on said mortgage, together with the legal costs and charges of sale, including an attorney's fee allowed by law, the land and premises situated in the City of Ypsilanti, County of Washtenaw, State of Michigan, described as follows:

Lot one hundred fourteen (114), AINSWORTH PARK, City of Ypsilanti, Washtenaw County, Michigan, according to the plat thereof as recorded in Liber 4, Page 21 of the Washtenaw County Records.

During the twelve (12) months immediately following the sale, the property may be redeemed.

Dated: November 29, 1972.

PEOPLES FEDERAL SAVINGS AND LOAN ASSOCIATION OF DETROIT, a corporation organized and existing under the Home Owners' Loan Act of 1938 of the United States of America, by an instrument of assignment dated October 3, 1961, and recorded October 1, 1961, in Liber 984 of the Washtenaw County Register of Deeds Records, on Page 517, on which mortgage there is claimed to be due and unpaid at the date of this Notice, including principal and interest, the sum of Ten Thousand and No/100 DOLLARS (\$10,000.00), including interest at 7 1/2% per annum, and no sum or sums of money or interest have been paid on said mortgage.

Under power of sale contained in said mortgage and the power of sale in said mortgage contained having become operative by reason of such default:

NOTICE IS HEREBY GIVEN, that on Tuesday, the first day of January, 1973, at 10:00 o'clock in the forenoon, at the South entrance of the County Building in the City of Ann Arbor, Washtenaw County, Michigan, that being the building where the Circuit Court for the County of Washtenaw is held, there will be offered for sale and sold to the highest bidder at public auction for the purpose of satisfying the amount due on said mortgage, together with the legal costs and charges of sale, including an attorney's fee allowed by law, the land and premises situated in the City of Ypsilanti, County of Washtenaw, State of Michigan, described as follows:

Lot one hundred fourteen (114), AINSWORTH PARK, City of Ypsilanti, Washtenaw County, Michigan, according to the plat thereof as recorded in Liber 4, Page 21 of the Washtenaw County Records.

During the twelve (12) months immediately following the sale, the property may be redeemed.

Dated: November 29, 1972.

PEOPLES FEDERAL SAVINGS AND LOAN ASSOCIATION OF DETROIT, a corporation organized and existing under the Home Owners' Loan Act of 1938 of the United States of America, by an instrument of assignment dated October 3, 1961, and recorded October 1, 1961, in Liber 984 of the Washtenaw County Register of Deeds Records, on Page 517, on which mortgage there is claimed to be due and unpaid at the date of this Notice, including principal and interest, the sum of Ten Thousand and No/100 DOLLARS (\$10,000.00), including interest at 7 1/2% per annum, and no sum or sums of money or interest have been paid on said mortgage.

Under power of sale contained in said mortgage and the power of sale in said mortgage contained having become operative by reason of such default:

NOTICE IS HEREBY GIVEN, that on Tuesday, the first day of January, 1973, at 10:00 o'clock in the forenoon, at the South entrance of the County Building in the City of Ann Arbor, Washtenaw County, Michigan, that being the building where the Circuit Court for the County of Washtenaw is held, there will be offered for sale and sold to the highest bidder at public auction for the purpose of satisfying the amount due on said mortgage, together with the legal costs and charges of sale, including an attorney's fee allowed by law, the land and premises situated in the City of Ypsilanti, County of Washtenaw, State of Michigan, described as follows:

Lot one hundred fourteen (114), AINSWORTH PARK, City of Ypsilanti, Washtenaw County, Michigan, according to the plat thereof as recorded in Liber 4, Page 21 of the Washtenaw County Records.

During the twelve (12) months immediately following the sale, the property may be redeemed.

Dated: November 29, 1972.

PEOPLES FEDERAL SAVINGS AND LOAN ASSOCIATION OF DETROIT, a corporation organized and existing under the Home Owners' Loan Act of 1938 of the United States of America, by an instrument of assignment dated October 3, 1961, and recorded October 1, 1961, in Liber 984 of the Washtenaw County Register of Deeds Records, on Page 517, on which mortgage there is claimed to be due and unpaid at the date of this Notice, including principal and interest, the sum of Ten Thousand and No/100 DOLLARS (\$10,000.00), including interest at 7 1/2% per annum, and no sum or sums of money or interest have been paid on said mortgage.

Under power of sale contained in said mortgage and the power of sale in said mortgage contained having become operative by reason of such default:

NOTICE IS HEREBY GIVEN, that on Tuesday, the first day of January, 1973, at 10:00 o'clock in the forenoon, at the South entrance of the County Building in the City of Ann Arbor, Washtenaw County, Michigan, that being the building where the Circuit Court for the County of Washtenaw is held, there will be offered for sale and sold to the highest bidder at public auction for the purpose of satisfying the amount due on said mortgage, together with the legal costs and charges of sale, including an attorney's fee allowed by law, the land and premises situated in the City of Ypsilanti, County of Washtenaw, State of Michigan, described as follows:

Lot one hundred fourteen (114), AINSWORTH PARK, City of Ypsilanti, Washtenaw County, Michigan, according to the plat thereof as recorded in Liber 4, Page 21 of the Washtenaw County Records.

During the twelve (12) months immediately following the sale, the property may be redeemed.

Dated: November 29, 1972.

PEOPLES FEDERAL SAVINGS AND LOAN ASSOCIATION OF DETROIT, a corporation organized and existing under the Home Owners' Loan Act of 1938 of the United States of America, by an instrument of assignment dated October 3, 1961, and recorded October 1, 1961, in Liber 984 of the Washtenaw County Register of Deeds Records, on Page 517, on which mortgage there is claimed to be due and unpaid at the date of this Notice, including principal and interest, the sum of Ten Thousand and No/100 DOLLARS (\$10,000.00), including interest at 7 1/2% per annum, and no sum or sums of money or interest have been paid on said mortgage.

Under power of sale contained in said mortgage and the power of sale in said mortgage contained having become operative by reason of such default:

NOTICE IS HEREBY GIVEN, that on Tuesday, the first day of January, 1973, at 10:00 o'clock in the forenoon, at the South entrance of the County Building in the City of Ann Arbor, Washtenaw County, Michigan, that being the building where the Circuit Court for the County of Washtenaw is held, there will be offered for sale and sold to the highest bidder at public auction for the purpose of satisfying the amount due on said mortgage, together with the legal costs and charges of sale, including an attorney's fee allowed by law, the land and premises situated in the City of Ypsilanti, County of Washtenaw, State of Michigan, described as follows:

Lot one hundred fourteen (114), AINSWORTH PARK, City of Ypsilanti, Washtenaw County, Michigan, according to the plat thereof as recorded in Liber 4, Page 21 of the Washtenaw County Records.

During the twelve (12) months immediately following the sale, the property may be redeemed.

Dated: November 29, 1972.

PEOPLES FEDERAL SAVINGS AND LOAN ASSOCIATION OF DETROIT, a corporation organized and existing under the Home Owners' Loan Act of 1938 of the United States of America, by an instrument of assignment dated October 3, 1961, and recorded October 1, 1961, in Liber 984 of the Washtenaw County Register of Deeds Records, on Page 517, on which mortgage there is claimed to be due and unpaid at the date of this Notice, including principal and interest, the sum of Ten Thousand and No/100 DOLLARS (\$10,000.00), including interest at 7 1/2% per annum, and no sum or sums of money or interest have been paid on said mortgage.

Under power of sale contained in said mortgage and the power of sale in said mortgage contained having become operative by reason of such default:

Sheep Information Meetings Slated With Specialists

Sheep raisers and others interested in sheep will have an opportunity to spend a little longer time studying the latest developments in their industry by attending a special shortcourse at the Alaledon Township Hall near Mason. The course will meet from 7:30 to 10 p.m. on five consecutive Thursday evenings beginning Jan. 4.

Graydon Blank, Extension Sheep Specialist at Michigan State University, who is heading up the course, says that the 12 hours of instruction which the course provides will allow time to cover men's in sheep management than the usual two-hour meeting for specialists. He will be assisted by specialists from the Animal Husbandry Department and Veterinary College staff at Michigan State University.

A nominal charge will be made to cover cost of a special sheep producers handbook and refreshments. Further details are available at the County Co-operative Extension Office.

ORDER OF PUBLICATION

General

State of Michigan, Probate Court for the County of Washtenaw.

Estate of MARY BURG, Deceased.

It is Ordered that on February 27, 1973, at 9:00 a.m., in the Probate Courtroom, Ann Arbor, Michigan, a hearing be held at which all creditors of said deceased are required to prove their claims and heirs will be determined. Creditors must file sworn claims with the court and serve a copy on Virginia Howe, 18530 - Bush Road, Chelsea, Michigan.

Publication and service shall be made as provided by Statute and Court Rule.

Dated: December 14, 1972.

Rodney E. Hutchinson, Judge of Probate.

Keusch & Flintoff, Attorneys for Estate, 121 South Main Street, Chelsea, Michigan. Dec. 21-28-Jan. 4

ORDER OF PUBLICATION

General

State of Michigan, Probate Court for the County of Washtenaw.

Estate of EDNA FAULKNER, Deceased.

It is Ordered that on February 27, 1973, at 9:00 a.m., in the Probate Courtroom, Ann Arbor, Michigan, a hearing be held at which all creditors of said deceased are required to prove their claims. Creditors must file sworn claims with the court and serve a copy on Reed City, R.F.D. No. 3, Box 282 A, Reed City, MI 49767, prior to said hearing.

Publication and service shall be made as provided by Statute and Court Rule.

Dated: December 15, 1972.

Rodney E. Hutchinson, Judge of Probate.

Keusch & Flintoff, Attorneys for Estate, 121 South Main Street, Chelsea, Michigan. Dec. 21-28-Jan. 4

MORTGAGE SALE

Default having been made in the conditions of a mortgage made by EARL E. THOMAS and SHERIAN THOMAS, his wife, to CAPITAL MORTGAGE CORPORATION, 26600 Telegraph Road, Southfield, Michigan, Mortgagee, dated the 30th day of August, A. D. 1971, and recorded in the office of the Registrar of Deeds, in the County of Washtenaw and State of Michigan, on the 28th day of September, A. D. 1971, in Liber 1872, of the Washtenaw County Records, on which mortgage there is claimed to be due at the date of this notice, for principal and interest, the sum of Twenty Thousand Nine Hundred Forty-One and 78/100 (\$20,941.78) Dollars, including interest at 7 1/2% per annum.

And no sum or sums of money or interest have been paid on said mortgage.

Under power of sale contained in said mortgage and the power of sale in said mortgage contained having become operative by reason of such default:

NOTICE IS HEREBY GIVEN that said mortgage will be foreclosed by a sale of the mortgaged premises, or some part of them, at public auction, at the West entrance of the Washtenaw County Building, in the City of Ann Arbor, Washtenaw County, Michigan, at 10:00 o'clock a.m., Local Time, on Friday, January 26, 1973.

Said premises are situated in the Township of Ypsilanti, Washtenaw County, Michigan, and are described as follows:

Lot 48, GROVE PARK HOMES SUBDIVISION, according to the plat thereof as recorded in Liber 19, Page 72 and 73 of the Washtenaw County Records.

Commonly known as 2148 Nancy.

The length of the period of redemption from such sale will be six months.

Dated: December 14, 1972.

CAPITAL MORTGAGE CORPORATION, Mortgagee.

SALEMAN & LEE, Attorneys for Mortgagee, 2200 Davidson Building, Detroit, Michigan 48226.

Dec. 14-21-28-Jan. 4-11-18

ORDER OF PUBLICATION

General

State of Michigan, Probate Court for the County of Washtenaw.

Estate of VIOLA T. CZAPLA, Deceased.

It is Ordered that on January 30, 1973, at 9:00 a.m., in the Probate Courtroom, Ann Arbor, Michigan, a hearing be held on the petition of Agnes Mullen, executrix, for allowance of her final account, and for assignment of residue.

Publication and service shall be made as provided by Statute and Court Rule.

Dated: December 26, 1972.

Rodney E. Hutchinson, Judge of Probate.



BOWLING NEWS



Junior House League

Standings as of Dec. 21

	W	L
Sales & Service	75	30
Building Supply	69	36
sten Engineering	69	36
blus	64	41
sea Lanes	58	47
ness Inn	55	50
verine No. 1	55	50
er Automotive	53	52
verine No. 2	51	54
igan Bell	50	55
ix	45	60
American Rockwell	44	61
anah Lake Store	44	61
a No. 3	30	75
inger Realty	23	82
0 games: J. Harok, 210, 224;		
alver, 222; E. Harok, 222; E.		
shall, 215; T. Stepp, 214; R.		
kine, 215; G. White, 213; A.		
cher, 210.		
0 series: A. Fletcher, 604.		
25 series: W. Kruse, 542; R. V.		
den, 566; J. Harok, 592; L.		
er, 588; G. Weir, 583; E. Har-		
ok, 588; H. Burnett, 543; J. Toma-		
D. Buku, 557; T. Stepp, 593;		
ingerfelt, 532; R. Erskine, 575;		
Walton, 528; T. Steele, 534; D.		
ate, 549; F. Northrup, 548; G.		
ite, 596; T. Dittmar, 544; W.		
man, 562.		

Charlie Brown & Snoopy's Friends Prep Division

Standings as of Dec. 23

	W	L
bulldogs	25	5
od Guys	24	6
een Hornets	17	13
ok Panthers	17	13
gers	15	15
ver Rats	15	15
itz	15	15
LA-UC Girls	10	20
ad Runners	9	21
ad Barons	3	27
Boys, over 140: M. Sweeney, 168;		
L. Lovely, 157; D. Stock, 156;		
Girls, over 100: B. Collins, 121;		
E. Tobin, 116; M. Northrop,		
41.		

Subscribe today to The Standard!



CHELSEA FINANCE CORP.

Old Timers

Standings as of Dec. 22

	W	L
Sanford Security Serv.	44	20
Sprentall's Marathon	39 1/2	24 1/2
Nelson Realtors	35	29
Cloverleaf Lanes	35	29
Bob & Otto Standard	34	30
Hartman Ins.	34	30
Merkel Furniture	33	31
Dino's Pin Room	33	31
Has Beens	32	32
Hotzel Service	32	32
Milan Screw Products	30	34
Ehnes & Son	29	35
Team No. 18	29	35
Team No. 16	27	37
Stein & Goetz	27	37
Team No. 14	26	38
Colonial Lanes	22 1/2	41 1/2
High team game: Hotzel Service, 855.		
High team series: Sportsman's Tavern, 2,387.		
High ind. game: E. Stanfier, 232.		
High ind. series: G. Lawrence, 611.		
Other 200 games, 500 series and over: G. Lawrence, 206, 211; R. Schnieder, 209; E. Armbruster, 201, 203; E. Niethammer, 203; E. Armbruster, 585; R. Schnieder, 548; A. Robinson, 537; E. Stanfier, 536; W. Butzin, 524; W. Fishlock, 520; E. Niethammer, 519; G. Riethmiller, 531; F. Menerey, 517; P. Bock, 511; L. Dell, 507; R. McCleery, 506; R. Raab, 517; C. Burmeister, 513.		

Junior Swingers

Standings as of Dec. 23

	W	L
Hot Shots	49	11
Return of Bully Bros.	47	13
74" Strikers	40	20
The Rods	34	26
Team No. 8	30 1/2	29 1/2
Spectacles	27	33
The Fancy Five	23	37
Revolutions	22	38
YBA Scorers	14	46
The B.B.A.'s	13 1/2	46 1/2
Girls, games over 120: D. Alexander, 140; D. Craft, 122; M. Fahrner, 125; K. Tobin, 174; B. McGuire, 128, 147; T. Abdon, 140, 120, 147; L. Hafner, 161, 141, 155; C. Miller, 123.		
Girls, series over 350: K. Tobin, 358; B. McGuire, 378; T. Abdon, 407; L. Hafner, 457.		
Boys, games over 150: J. Collins, 153; C. Sannes, 160, 155; J. Sweet, 172; D. Craft, 175; D. Messner, 169, 210; D. Alber, 158.		
Boys, series over 440: C. Sannes, 448; D. Messner, 501; D. Alber, 443.		
Dec. 16—D. Craft, 251, 148, 219—618 series.		

Hi-Point Mixed League

Standings as of Dec. 19

	W	L
Weber Construction	315	225
Guess Who	308	230
ZAP	299	241
Alley Katz	293	247
River Rats	292	248
Ding Bats	288	252
Flat Tires	280	260
Ding A Lings	275	265
Moving Violations	246	294
Hi Steppers	215	325
Cheetah Weetahs	215	325
Holy Terrors	212	328
Men, series over 450: P. Fletcher, 557; O. Inbody, 508; D. Carpenter, 603; F. Steers, 465.		
Men, games over 160: P. Fletcher, 202, 185, 175; D. Carpenter, 190, 164; O. Inbody, 161, 176, 171; M. Gehring, 199; M. Purdy, 168; F. Steers, 168; M. Fox, 168; G. Willis, 169; C. Curtis, 170; H. Templeman, 169.		
Women, series over 425: S. Walton, 523; B. Hoyt, 497.		
Women, games over 150: S. Walton, 203, 171; P. Guenther, 207; G. DeSmith, 155; B. Barth, 152; J. Fletcher, 150.		

Guys & Gals Mixed League

Standings as of Dec. 21

	W	L
Elliott's Milk Hauling	47	13
Half Mooners	40	20
Village Motor Sales	38	22
Halfmoon Lakers	38	24
W.O.W.	33	27
Grass Lake	27	33
Team No. 90	25	35
The Joneses	24 1/2	35 1/2
Team No. 11	24	36
Team No. 10	23	37
Team No. 9	22	38
The Downers	20 1/2	39 1/2
Team, high game: Team No. 90, 864.		
Team, high series: Team No. 90, 2,444.		
Women, high game: P. Elliott, 201.		
Women, high series: P. Elliott, 513.		
Women, 150 or over games: P. Elliott, 201, 170; S. Steele, 157, 179; V. Schmidt, 158; E. Close, 150, 171; D. Feliks, 153; M. L. Westcott, 167, 168, 167.		
Women, 450 or over series: P. Elliott, 513; S. Steele, 474; M. L. Westcott, 502.		
Men, high game: T. Stepp, 206.		
Men, high series: T. Stepp, 571.		
Men, 175 or over games: R. Miller, 179; T. Stepp, 171, 206, 194; G. Gauthier, 181, 174; W. Geller, 188; D. Feliks, 176; D. Adams, 179; T. Steele, 191; R. Kelly, 178; J. Elliott, 201, 194.		
Men, 500 or over series T. Stepp, 571; W. Geller, 534; T. Steele, 528; J. Elliott, 564.		

Chelsea Women's Bowling Club

Standings as of Dec. 20

	W	L
Parish's Cleaners	49	15
Jiffy Mixes	48	16
Chelsea Lanes	43	21
Chelsea Grinding	38	28
Washtenaw Engr. Co.	36	28
Norris Electric	32	32
Schneider's Grocery	32	32
Chelsea Milling	31	33
Mark IV	30	34
Bridges Chevrolet	28 1/2	35 1/2
Jiffy Market	28	36
Wolverine Bar	27 1/2	36 1/2
Alley Cats	27	37
Ben's Arco	23	41
N. American Rockwell	22	42
Heydlauff's	19	45

150 series and over: P. Shoemaker, 197, 193, 176; B. Fritz, 156, 174, 213; T. Steinaway, 189, 170, 186; D. Judson, 154, 210; N. Kern, 158, 157, 169; D. Alber, 153, 195; A. Alexander, 151, 170, 155; D. Verwey, 200; M. Eder, 169; J. Schleede, 169; R. Hummel, 187; M. Sutter, 180; S. Klink, 168; D. Frisbie, 151, 150; L. Orlowski, 178; N. Popovich, 174, 150; J. Hafner, 165; P. Poertner, 175; H. Morgan, 158, 161; M. Kozminski, 163; A. Judson, 194, 162; B. Bush, 174; J. Rowe, 157; A. Eisele, 161; J. Norris, 162; B. Larson, 150; M. Kruse, 155; L. Bradbury, 157; R. Paul, 176; J. Seidort, 167, 160; G. Penhallow, 152.

CHS Wrestling Schedule

Dec. 14—Lincoln	there
Dec. 16—Mason Tournament.	
Dec. 19—Double Dual	
	at Jackson Northwest
Dec. 21—Tecumseh	home
Jan. 4—Dundee	there
Jan. 6—Parma Western Tourney.	
Jan. 9—Jackson Northwest	home
Jan. 11—South Lyon	home
Jan. 16—Stockbridge	there
Jan. 18—Milan	home
Jan. 20—South Lyon Tournament.	
Jan. 25—Novi	there
Jan. 30—Pinckney	there
Feb. 1—Dexter	home
Feb. 8—Brighton	there
Feb. 20—Jackson Northwest	home



ADOPTABLE! Many beautiful puppies and full-grown dogs are needing homes. They can only be kept temporarily at the Huron Valley Humane Society Animal Shelter, 3100 Cherry Hill Rd., at Dixboro. The telephone number for the Shelter is 662-5585. Hours are Monday through Saturday, 9 a.m. to 5 p.m., Sunday, 1 to 5 p.m.

Manchester Snowmobile Race Is Jan. 7

Want to participate in, or be a spectator at one of the most exciting snowmobile races in Michigan? The event is little Manchester's big annual Jaycee Snowmobile Race on Jan. 7. The big feature is the high banked oval race track. Race drivers get lots of speed and spectators get lots of excitement. This yearly event is MISA sanctioned and this year will be featured as a Class B race, one day only. Entry fee is \$10 per driver with 90 percent of the entry money going for prizes. (Expected to reach \$2,000 this year). Registration starts at 9 a.m. and ends at 11:30. The first race of the day starts at 12 noon. An extra attraction this year is the addition of a junior race, ages are 12-16 with a 300cc machine as the maximum. Boys and girls may enter the races.

Everyone is welcome to enter the races, novices or pros. Other features include free parking, bleachers and a concession stand plus a ramp for cars from which fans can watch the races from their cars. The race is sponsored by the Manchester Jaycees and all 100 men are needed to make the race go smoothly. The proceeds from the race are then used by the Jaycees for community betterment. Examples are scholarships for students, sponsoring boy and girl scout troops, Halloween party, etc.

Telephone Your Club News To 475-1371.

WILDLIFE TAXIDERMY STUDIO, INC.

Big and Small Game Mountings and African Trophies Deer Horns & Hides

Phone (313) 498-2518
14800 Van Syckle Rd.
Gregory, Mich. 48137

Woodford Is New Head of Highway Dept.

Lansing—John P. Woodford is Michigan's new State Highway Director and will serve as the chief executive officer of the 4,300-employee Department of State Highways.

Woodford, the Department's Deputy Director-Chief Engineer since 1967, was named by the State Commission to succeed Henrik E. Stafseth, who became executive director of the American Association of State Highway Officials, Nov. 1.

Woodford, 49, becomes the 12th man to serve as the Department's Chief administrator.

Woodford was born in the Dominican Republic where his father managed an American-owned sugar plantation. He graduated from high school in West Springfield, Mass., and served for three years in the Army Air Force in World War II.

After graduation from Cornell University in 1947 with a degree in civil engineering, he worked for Detroit for two years before joining the State Highway Department in 1949.

More than 2,500 showings of TV programs and series filmed at the University of Michigan Television Center were aired by 12 Michigan stations during 1971.

ASPEN — The Generous Provider

ASPEN — The Generous Provider

ASPEN OR "POPPLE" CONSISTS OF TWO KINDS: TREMBLING AND LARGE TOOTH.

THE LARGER MALE PLANTING SPECIES ARE PREFERRED BY DEER.

ASPEN STANDS PROVIDE YEAR-ROUND NEEDS OF RUPTURED GROUNDS: FOOD IN WINTER AND SUMMER; SHEDDING AND NESTING SITES IN THE SPRING.

ASPEN AND ASSOCIATED PLANTS ARE A STAPLE FOOD FOR DEER—LEAVES IN SUMMER, TWIGS AND BUDS IN WINTER. NUTRITIONALLY, ASPEN IS ONLY MEDIUM IN QUALITY.

WHEN AN ASPEN STAND IS CUT OR BURNED, THE RADIATING SHALLOOY ROOTS GIVE RISE TO HUNDREDS OF SUCKERS WHICH PROVIDE ALMOST INSTANT FOOD FOR DEER AND SNOWSHOE HARES.

Wheel! A jumping New Year is about to begin, but before we push ahead we want to express to you, our deep gratitude for your patronage.

VERY HAPPY NEW YEAR

Honegger's & Company, Inc.
11800 DEXTER-CHELSEA ROAD

ON to the New Year

As the New Year arrives, we join each and every one of you in the resolve to increase our efforts to make our community a healthier, happier and more prosperous one.

With deep pride in the continued support you have extended to us, we say, "Thank You!"

CHELSEA LANES and MARK IV LOUNGE

HAPPY NEW YEAR

Hats off to a brand New Year! May it be a merry-go-round of happy times for all our valued patrons.

PARISH'S CHELSEA CLEANERS

HAPPY NEW YEAR

Step up to the excitement of a New Year. May a full measure of good luck and happiness be yours in the coming year.

THE PUB
JACK LeSAGE and FAMILY and EMPLOYEES

+ Services in Our Churches +

FIRST UNITED METHODIST CHURCH
The Rev. Clive Dickens, Pastor
Thursday, Dec. 28—
8:00 p.m.—Administrative Board will meet in the Educational Unit.
Friday, Dec. 29—
6:30 p.m.—Christian Home Group will meet at the home of Mr. and Mrs. Art Stoll.
Sunday, Dec. 31—
9:00 a.m.—Church School, nursery through adult.
10:00 a.m.—Worship service.
8:00 p.m.—Junior High UMYF "Crazy Dinner" in the Social Center.
8:00 p.m.—No Intermediate Choir.
Wednesday, Jan. 3—
3:30 p.m.—Primary Choir.
4:00 p.m.—Junior Choir.
8:00 p.m.—Chapel Choir.

IMMANUEL BIBLE CHURCH
145 E. Summit St.
The Rev. LaRoy Johnson, Pastor
Every Sunday—
9:45 a.m.—Sunday school, nursery provided.
11:00 a.m.—Morning worship, nursery provided.
Every Wednesday—
7:30 p.m.—Family hour, prayer meeting and Bible study.
First Sunday of Month—
7:00 p.m.—Communion service.

ST. THOMAS EVANGELICAL LUTHERAN
Ellsworth and Haas Rds.
The Rev. Daniel L. Mattson, Pastor
Sunday, Dec. 31—
10:00 a.m.—Worship service.
11:00 a.m.—Sunday school and Bible classes.
7:30 p.m.—New Year's Eve service at Zion Lutheran church.

NORTH SHARON COMMUNITY BIBLE CHURCH
Sylvan and Washburn Rds.
The Rev. William Emslen, Pastor
Every Sunday—
10:00 a.m.—Sunday school.
11:00 a.m.—Worship service.
(Nursery will be available.) Junior church classes.
6:00 p.m.—Senior High Youth meeting, Youth Choir.
7:00 p.m.—Evening worship services. (Nursery available.)
Every Wednesday—
7:00 p.m.—Bible study and prayer meeting. (Nursery available.)
Bus transportation available: 428-7222.

BAHA' FIRESIDE
Every Thursday—
8:00 p.m.—At the home of Toby Peterson, 705 S. Main St. Anyone wishing to learn about the Baha' faith is welcome.

ST. MARY CATHOLIC CHURCH
The Rev. Fr. David Philip Dupuis, Pastor
Every Saturday—
7:30 p.m.—Mass.
Every Sunday—
6:30, 8:00, 10:00, 11:30 a.m.—Mass.

CONGREGATIONAL CHURCH (United Church of Christ)
The Rev. Paul Gerhart, Pastor
Every Sunday—
9:45 a.m.—Sunday school.
11:00 a.m.—Worship service.
7:00 p.m.—Evangelistic service.
Every Saturday—
9:30-9:00 a.m.—Men's Breakfast.
Every Sunday—
8:00 a.m.—Senior High Sunday school.
9:45 a.m.—Sunday school.
10:00 a.m.—Morning worship.

ZION LUTHERAN CHURCH
Corner of Fletcher, Waters Rds. (Rogers Corners)
The Rev. John R. Morris, Pastor
Sunday, Dec. 31—
8:00 a.m.—Sunday school.
10:15 a.m.—Worship.
7:30 p.m.—New Year's Eve joint service. St. Thomas congregation as guests.
Monday, Jan. 1—
No choir rehearsal. Rehearsal resumes Jan. 8.
1:30 p.m.—Lydia Circle.
7:45 p.m.—Martha Circle.
Saturday, Jan. 6—
9:00 a.m.—Youth classes.
Sunday, Jan. 7—
9:00 a.m.—Sunday school.
10:15 a.m.—Worship with Holy Communion.

NORTH LAKE UNITED METHODIST CHURCH
The Rev. Harry Weeks, Pastor
Every Sunday—
9:30 a.m.—Worship service.
10:30 a.m.—Sunday school.
Every Tuesday—
7:00 p.m.—Choir rehearsal.
Every Thursday—
4:00 p.m.—Children's Choir rehearsal.
First Wednesday—
9:30 a.m.—Jane Circle.
Second Tuesday—
UMWSCS.

OUR SAVIOUR LUTHERAN CHURCH
The Rev. William H. Keller, Pastor
1515 S. Main, Chelsea
Each Sunday—
9:00 a.m.—Sunday school.
10:30 a.m.—Worship service.

CHELSEA BAPTIST CHURCH
337 Wilkinson
The Rev. James Stacey, Pastor
Every Sunday—
9:45 a.m.—Sunday school.
11:00 a.m.—Worship service.
Nursery care available during all services.
8:00 p.m.—Junior and Senior Baptist Youth Fellowship.
7:00 p.m.—Evening service.
Every Wednesday—
7:00 p.m.—Bible study and prayer meeting.

FIRST ASSEMBLY OF GOD
The Rev. Thode B. Thodeson, Pastor
Every Sunday—
9:45 a.m.—Sunday school.
11:00 a.m.—Worship service.
7:00 p.m.—Evangelistic service.
Every Wednesday—
7:00 p.m.—Midweek services.

SALEM GROVE UNITED METHODIST CHURCH
The Rev. Harry Weeks, Pastor
Every Saturday—
2:30 p.m.—Choir rehearsal.
Every Sunday—
10:00 a.m.—Sunday school.
11:00 a.m.—Worship service.
Every Thursday—
4:00 p.m.—Children's Choir rehearsal.
First Wednesday—
8:00 p.m.—Church Women meeting.

ST. PAUL UNITED CHURCH OF CHRIST
The Rev. Warner Siebert, Pastor
Sunday, Dec. 31—
9:15 a.m.—Church school.
10:30 a.m.—Worship service.
Memorial service. Sermon entitled: "Who's in First Place?"
Courier articles due.

ST. BARNABAS EPISCOPAL CHURCH
20550 Old US-12
The Rev. C. Walton Fitch, Vicar
Telephone 424-8815
Every Sunday—
9:15 a.m.—Holy Communion, first, third and fifth Sundays.
9:15 a.m.—Morning Prayer, second and fourth Sundays.

VILLAGE UNITED METHODIST CHURCH OF WATERLOO
8118 Washington St.
The Rev. Altha Barnes, Pastor
Every Sunday—
10:00 a.m.—Sunday school.
11:15 a.m.—Morning worship.

FIRST UNITED PRESBYTERIAN CHURCH
Unadilla
The Rev. T. H. Liang
Every Sunday—
9:45 a.m.—Sunday school.
11:00 a.m.—Worship service.
Every Tuesday—
8:00 p.m.—Choir practice.

CHURCH OF CHRIST
13861 Old US-12, East
David A. Rushlow, Pastor
Every Sunday—
10:00 a.m.—Church school.
11:00 a.m.—Worship service.
Nursery will be available.
6:00 p.m.—Worship service.
Every Wednesday—
7:30 p.m.—Bible study.

ST. JACOB EVANGELICAL LUTHERAN CHURCH
12501 Rietmiller Rd., Grass Lake
The Rev. Andrew Bloom, Pastor
Every Sunday—
9:00 a.m.—Worship service.
10:15 a.m.—Livine services.

WATERLOO FIRST UNITED METHODIST
Parks and Territorial Rds.
The Rev. Altha Barnes, Pastor
Every Sunday—
9:15 a.m.—Morning worship.

ST. JOHN'S EVANGELICAL AND REFORMED CHURCH
(United Church of Christ)
Rogers Corners
The Rev. Richard Campbell, Pastor
Every Sunday—
9:30 a.m.—Sunday school.
10:30 a.m.—Morning worship.

GREGORY BAPTIST CHURCH
The Rev. Grant Lapham, Pastor
Every Sunday—
10:00 a.m.—Worship.
10:00 a.m.—Sunday school.
7:30 p.m.—Evening worship service.

METHODIST HOME CHAPEL
The Rev. R. L. Clemans, Chaplain
Every Sunday—
8:45 a.m.—Worship service.
Every Sunday—
10:00 a.m.—Worship service.
11:15 a.m.—Church school.
6:30 p.m.—Baptist Youth Fellowship.

BETHEL EVANGELICAL AND REFORMED CHURCH
(United Church of Christ)
Freedom Township
The Rev. Roman A. Reineck
Every Sunday—
10:00 a.m.—Worship.
10:00 a.m.—Sunday school.

ST. JOHN'S EVANGELICAL AND REFORMED CHURCH
(United Church of Christ)
Francisco
The Rev. Robert Towale, Pastor
Every Sunday—
10:00 a.m.—Worship service.
10:20 a.m.—Sunday school.

Crop Insurance Offices Swamped With Claims

The 22 Federal Crop Insurance Offices administering the USDA Crop Insurance program are literally swamped by farmers reporting damage or loss on their corn and soybeans.

Jess Bishop, Springfield, Ill., sales director for the Government "All-Risk" Insurance Corp., announced that more than 6,000 farmers have reported probable loss on their crops. Two good weeks of harvest weather would salvage much of the corn but many acres of soybeans will never be harvested.

All policyholders who gave notice of loss should report to their county office as soon as each unit is harvested.

The 1973 Crop Insurance Premium Rates and Coverages are on file. In the interest of fiscal responsibility, there will be limits of expansion in 1973. Applications are being taken on a first come basis.

Federal Crop Insurance is making a big step forward by individual underwriting of all farmers in eight counties based on actual production records. This equalizes the premium to risk on each farming operation. The producer may be benefitted by a lower premium rate or higher yield guarantee.

The Federal Crop Insurance Corp., an agency of the United States Department of Agriculture, offers All-Risk protection on farm crops. Coverage is provided against all unavoidable causes of loss resulting from adverse weather, insects, and disease during the growing season.

All people desiring information about this USDA program should contact their office at Federal Crop Insurance Corporation, U.S.D.A., R. 5, W. Chicago Rd., Coldwater, 49036, telephone: (517)-278-2088.

CHELSEA MEDICAL CENTER
Every Other Wednesday—
1:30 p.m.—Worship service.

FIRST CHURCH OF CHRIST, SCIENTIST
1833 Washtenaw Ave., Ann Arbor
Every Sunday—
10:30 a.m.—Sunday school; morning service.

VILLAGE BEAUTY SALON

LORETTA - CINDY - EULA
CHERYL - JANICE - CAROL
107 N. MAIN PHONE 475-1671
We Will Be Closed Dec. 26-27, Closed Jan. 2-3
OPEN MONDAY THRU SATURDAY
Evenings By Appointment

Want to sell a car? Try a Standard Want Ad!



We're putting these wishes for good health and good times into orbit for our thoughtful patrons.

KISS BULLDOZING



Planning for a better tomorrow

Let's aim high and accomplish worthwhile goals this year to benefit everyone! To our patrons, thanks.

FRISINGER REALTY CO.

Realtors

George Frisinger - Paul Frisinger - Herman Koenn
Hope Bushnell - Mary Ann Staebler - Toby Peterson

Going... Going...



These won't wait for long. They're 1972 Evinrude left from last season, and we're going to move them now! You can bet we've cut prices to the bone and there are big bargains to be had.

They're just as tough and as new as they were last season. But get 'em quick, they won't last at these prices.

EVINRUDE

ready to go the distance

MILL CREEK SPORTING GOODS

8180 MAIN ST., DEXTER, MICH. PHONE HA 6-8135

SCHOOL LUNCH MENU

Week of Jan. 1-5

Monday, Jan. 1—New Year's Day.

Tuesday, Jan. 2—Italian spaghetti, grated cheese, buttered green beans, bread and butter, dish of fruit, bar cookie, milk.

Wednesday, Jan. 3—Hamburger on bun, relishes, potato tots, tossed salad, Jell-O with fruit, milk.

Thursday, Jan. 4—Hot beef sandwich, rich brown gravy, mashed potatoes, buttered vegetables, cherry dessert, milk.

Friday, Jan. 5—Submarine sandwich, tartar sauce, soup of the day, crackers, celery and carrots, fruit and milk.

Celebrities from the entertainment and sports worlds shared top billing with President Nixon and Administrator of Veterans Affairs built adapted homes. The VA annual Christmas program for roadside network to thousands of patients in VA's 168 hospitals across the nation. Traditional holiday music was performed by the Hollywood Bowl Symphony orchestra. The VA hospitals also made the record available to any radio station in the area who requested it.

New GI Bill Includes Women

The new bill of rights, a part of the legislation increasing and expanding veterans benefits signed by the President in October, makes equal benefits available to women veterans for the first time. Of the 537,000 women veterans, 9,000 have joined the veteran's ranks in the past fiscal year. Women veterans may now receive additional GI Bill payment for their husbands.

VA dependents' educational assistance, death pension and GI home loans are now available to widows of women veterans on the same basis as for widows of men who served in the armed forces. Husbands of women veterans, who are totally and permanently disabled by service-connected conditions, are eligible for educational assistance.

In the Midwest, in Ohio there are 8,000 women veterans who have served in the Post-Korean period; 8,000 in Illinois; 2,000 in Kentucky; 4,000 in Indiana and 7,000 in Michigan. Nationwide there are 140,000 women veterans who have served since the end of the Korean Conflict.

Subscribe today to The Standard!

FOSTER-DAVIES

OF MICHIGAN

fine furniture
since 1883

quality carpets
since 1945

FEATURING: Thomasville, Hammary, Serta, Berne, Beryan & J. P. Stevens

GRASS LAKE, MICHIGAN

STORE HOURS: Mon. thru Sat. 9:00 a.m. to 5:30 p.m. — Wed. evenings until 8:30

The Members and Friends of the FIRST ASSEMBLY OF GOD OF CHELSEA

Wish you a
Happy and Prosperous New Year

SERVICES THIS SUNDAY, DEC. 31:

Sunday School 9:45 a.m.

Morning Worship 11:00 a.m.

"Hitherto God Has Helped Us"

Watchnight 9:00 p.m.

Singing and Testimonials

Key '73 Projections

Outdoor Frolic at Fa-Ho-Lo Park

Fireside Rap Session

4 a.m. Breakfast



Let every month become an exciting beginning! Warm thanks for your support.

CLOSED ALL NEW YEAR'S DAY

RALPH FLETCHER'S FOOR MOBIL SERVICE

Ralph Fletcher - Dennis Sibley - Mike Hess
Mark Baize - James Salver

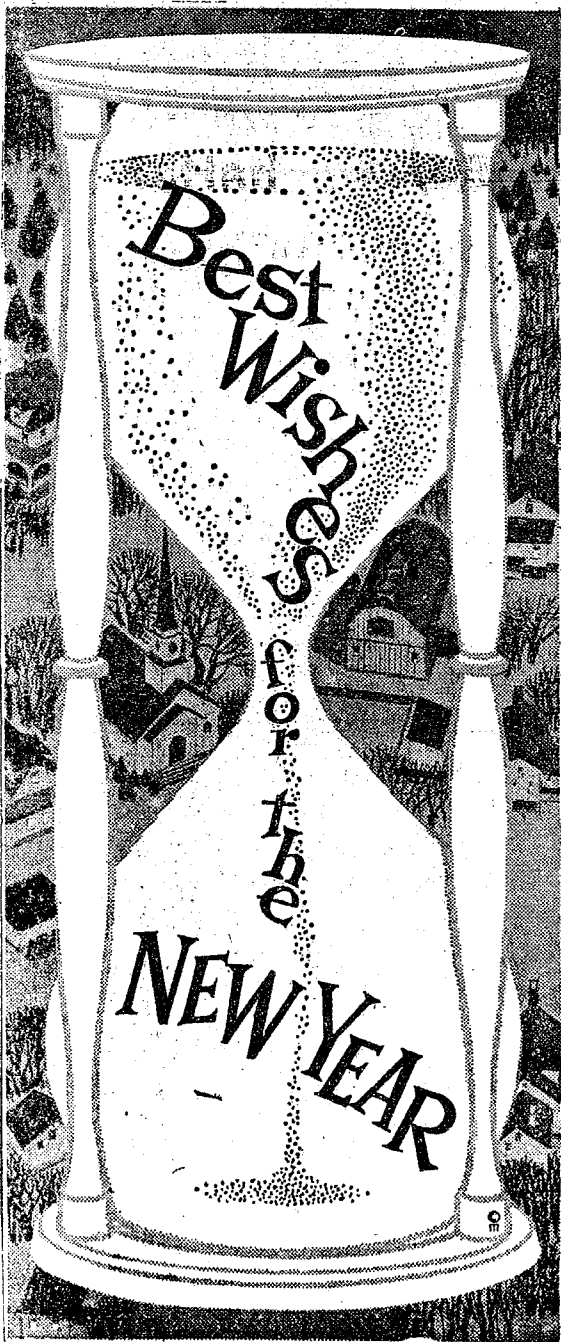
EFFECTIVE IMMEDIATELY

We cannot shell ear corn with moisture in excess of 25% until further notice.

Honegger's & Co., Inc.
11800 Dexter-Chelsea Rd. Phone 475-1386



F. C. BELSER
Builder



As the old year slips away, we turn to greet the New Year with happy expectations. Hope it's prosperous, peaceful to all in the community. Warm gratitude for the patronage shown us.

**KLUMPP BROS.
GRAVEL CO.**



NEIL STROESENREUTHER, Soil Scientist with the U. S. Soil Conservation Service in Ann Arbor, has been promoted to Assistant State Soil Scientist at SCS headquarters in East Lansing. In his new assignment, Stroesenreuther will be responsible for soil correlation work on a state-wide basis.

County Soil Scientist Named To Position in East Lansing

Neil Stroesenreuther, of Dexter, Soil Scientist with the U. S. Soil Conservation Service in Ann Arbor, has been promoted to Assistant State Soil Scientist at the SCS State Office in East Lansing.

Stroesenreuther was assigned to Ann Arbor in 1968 and since that time he has served as Soil Survey Party Leader for the Washtenaw county soil survey program. In his new assignment, he will have state-wide responsibility for soil correlation.

Stroesenreuther is from New London, Wis., and received his BS degree in soils from the University of Wisconsin at Madison. He recently received his MS from the University of Michigan in Conservation.

Stroesenreuther joined the Soil Conservation Service in 1961, and prior to coming to Ann Arbor, he held assignments at Cheboygan, Mt. Clemens and Clare. During his work with the SCS he has received two performance awards; one for Sustained Above Average Performance and one for Outstanding Performance.

In addition to his SCS duties, Stroesenreuther is a Chief Warrant Officer in the Naval Reserves. He has served as Engineering Officer and more recently as Training Officer in Ann Arbor. His professional memberships include the Soil Science Society of America and the Soil Conservation Society of America.

Stroesenreuther is married, and he and his wife, Jan, have three children: Jean, Patricia and Jim. Since coming to the Ann Arbor area they have resided at 7621 W. Huron River Dr.

Washtenaw Labor Market Sluggish

The sluggish labor market experienced by Washtenaw county during 1970 and 1971 shows signs of continuing through the end of 1972, according to statistics compiled by the Michigan Employment Securities Commission (M-ESC).

Based upon the M-ESC's definition, the labor force of any given area includes the number of persons presently employed within that area, plus those unemployed, and those temporarily out of work due to labor-management disputes. The labor force in Washtenaw county was 119,900 persons in 1971, an increase of 148 percent over the 1969 figure of 104,300. The annual unemployment rate average for 1971 was 6.7 percent, reaching a peak of 8.3 percent in June.

The unemployment rate for August, 1972, was 6.6 percent, with the preliminary rate for September showing a drop of 4.6 percent.

Monthly employment data shows that Washtenaw county experiences regular seasonal variations, with a "higher" rate occurring during the summer months when students enter the job market. The lowest unemployment for the county occurs in the fall, with the beginning of the new school year, and the new car model year.

In 1971, women experienced a lower unemployment rate than men with 6.2 percent and 7 percent, respectively. On the state level, the unemployment rate for females was 8.9 percent, compared with 7.7 percent for males.

With an unemployment rate of 11 percent, the non-white population experiences a much higher rate than the 6.7 percent for the county as a whole. Although only 7.6 percent of the labor force is non-white, 12.5 percent of the unemployed are non-white.

The characteristics of the applicants at the Ann Arbor and Ypsilanti branch offices of the Michigan Employment Security Commission show that the majority of the applicants were in the 22-39 age group.

Of the total applicants, 65.5 percent were high school graduates; 63.5 percent were male; and 82.3 percent were white. The occupational category of clerical and sales represented the largest number of applicants, with half of its 2,103 applicants women.

Of the three employment sectors, manufacturing, non-manufacturing, and government, only the latter showed a net increase in the employment in 1971 over the 1969 level.

The total non-farm employment has declined 2.2 percent since 1969. Durable goods accounted for most of the employment drop, with a decrease in employment of 8.8 percent.

All in all, the figures suggest, if you've got a job, keep it, at least until the trend changes. You're lucky to be where you are.

The Faculty Women's Club at the University of Michigan marked its 50th year of service to the University community.

District Court Proceedings

Week of Dec. 20-27

Norman Portice of Manchester, pled not guilty to improper parking, creating a traffic hazard. The trial will be held Jan. 29.

Kenneth Cady of Detroit, pled guilty to a charge that he failed to yield the right of way. He paid \$21 in fines and costs.

Thomas Morse of Ann Arbor, pled guilty to a charge of drunk and disorderly behavior. He was sentenced to \$50 in fines and costs or 10 days in jail. Morse also pled guilty to driving without valid registration plates. He was fined \$35.

Peter Tryand of Ann Arbor, was tried on charges of driving 55 mph in a 35 mph zone and careless driving. Both charges were dismissed.

Richard Allen of Whitmore Lake, was sentenced on his second offense of impaired driving to \$300 in fines, and costs and one year on probation without drinking. He must also attend the Alcoholics Anonymous Alcohol Education Series and spend five days on the Whitmore Lake Work Program.

Harry Daniels, of Ann Arbor, failed to appear for sentencing on charges of assault and battery and impaired driving. A bench warrant was issued.

Ronald Gilles of Jackson, appeared for trial on a charge that he failed to stop within a safe distance from another car. The case was dismissed.

Dorothy Webb Fuller of Ypsilanti, pled nolo contendere to a charge of passing bad checks. She was sentenced to \$200 in fines and costs and two years probation with the first five days in the county jail. Restitution of \$20 to Peters Grocery and \$30 to Dexter Pharmacy must also be made.

Betty Podesta of Ann Arbor, was tried for failure to stop for school bus loading and unloading. She was found guilty as charged and sentenced to \$100 in fines and costs and six months probation.

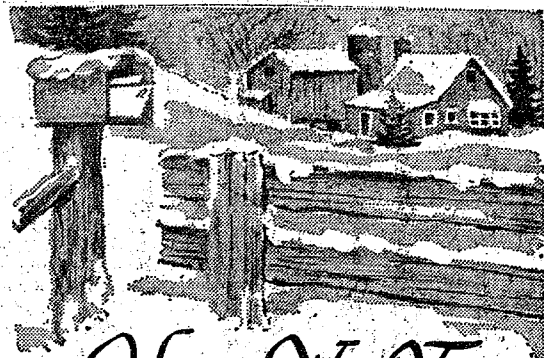
The 1.1 million veterans, widows and parents who received income questionnaires with their Nov. 1 pension checks should complete and return them promptly. The deadline is Jan. 15, and since the person's monthly check depends on replying to the questionnaire, no one should delay in returning it. A delay can cause late checks, smaller checks, or no checks at all. There are certain veterans drawing compensation payments whose dependents draw pensions who must also complete the forms.



We look forward to serving you again as we have in the past. Many thanks.

LEONARD REITH CO.

PLUMBING and HEATING
LEONARD - BOB



Happy New Year

May all your days be filled with peace and prosperity. We thank you for your continued loyal patronage.

GROVE 5c to \$1 Store

JOHN and DORIS PERRY
Mary Kay
Sue - Mary - Phyllis - Shirley



HAPPY NEW YEAR

May the coming year be filled with all the good things in life for you, your family and your friends. We're grateful for your patronage.

MERKEL HOME FURNISHINGS

Ferd Merkel - Norb Merkel - Jack Merkel - Bob Merkel
Helen Hoffman - Leola Brennan - Les Kelemen - Lynn Kendall
Pat Hudson - Carl Koch - Bob Kelemen - Bill Collins - Duwana Bertke
Mary Ann Merkel - Florence Gentner - Alicia Pierson - Dennis McConneghy
John Merkel - Tim Merkel - Dan Merkel - Matt Merkel - Harold Eiseman



We will close New Year's Eve at 6 p.m. and be closed all New Year's Day.

**STIVERS
Restaurant
& Bar**



**Sprague Buick - Olds - Opel
INC.**

Graham - Ted - Red - George - Larry - Don - Dave
John - Kevin - Geraldine - Doug - Tom

1972 Events in Review

(Continued from page seven)
convert a vacant lot off McKinley St. into a home diamond for the women's softball team.

14—Gar-Nett's Flower and Gift Shop, E. Middle St., opens its bright yellow doors for business.
19—Mark Montange, senior at Chelsea High school, leaves for the National AAU Freestyle Wrestling Tournament in Birmingham, Ala., where he will compete in the 115-pound category, facing approximately 30 other wrestlers from across the country.

22—Despite the heat, a crowd of dogs, children, and adults gather at Don Irwin's farm to participate in the second annual old fashioned wheat harvest.

24—Mrs. Sidney (Ruth) Schenk, Washington St., is victimized by three self-proclaimed antique dealers who stole \$600 worth of antiques from her home.

24—Chelsea C Babe Ruth baseball team defeats Dexter B' for their 10th win.

25—Polly's following a trend in the supermarket business, establishes 24 hour service.

August . . .

1—Hal Pennington, former village president, takes over the expired term of village clerk Richard Harvey. Lima Township Board approves an open letter to residents of Lima township and Washtenaw county, supporting the conclusions of the Johnson, Johnson, & Roy study.

3—Chelsea Area Regional Planning Committee, (CARPC) holds its first public meeting, and adopts by-laws.

7—Chelsea Board of Education decides to lease St. Mary's school for the kindergarten.

8—Harold Owings scores decisive victory in the primary election, winning the Republican nomination for sheriff in Washtenaw county.

14—Nominations place Ann Merkel, Judi Blass, Martha Blanch-

ard, Susan Shaw and Margaret Lancaster in contention for the Fair Queen title.

15—For the first time ever in Little League history, the league champs defeated the All Stars, as Murphy's Barber Shop edges the All-Stars, 9-6.

22—1972 Chelsea Community Fair opens with Judi Blass reigning as Queen.

25—Michael Herman L. Renar shoots and kills 18-year-old Michael Rossbach of N. Main St., who was seeking help for his stranded car.

26—Chelsea Fair attendance hits all-time record at 18,000.

31—The Walter Cordin family is caught on a hijacked plane.

September . . .

1—Chelsea Village president A. E. Fulk and his wife are victims of a five-car Labor Day week end pile up near Rochester.

4—Chelsea men, Dr. James Shadoan, Dr. Michael Papo, Tom Eisdele, and A. W. Vandervoot spend day in Olympic village with the Israeli team.

5—There is no major breakthrough in negotiations between the Chelsea Board of Education and the Chelsea Education Association despite meetings held by both associations.

7—Western Auto observes grand opening of its new store at 1178 S. Main.

10—Mark A. Waters, three-year-old son of Mr. and Mrs. Robert Waters of Pinckney, is found shot to death in the home of an off-duty trooper from Brighton State Police Post.

15—Unfair Labor Practice charges, filed by the Chelsea Education Association with the Michigan Employment Relations Commission against the Board of Education.

22—Chelsea Bulldogs open their

season with a 30-0 defeat of Dexter's Dreadnaughts.

24—St. Thomas Lutheran church celebrates the 130th anniversary of its founding.

24—The new Faith Evangelical Lutheran church dedicates its sanctuary.

29—Case of drug abuse surfaces at Beach school, involving five youngsters.

29—Bulldogs suffer loss to Saline's Hornets, 14-3.

30—Grover McFadden retires after 18 years with Schneider's Grocery, ending his career as a butcher.

October . . .

1—Chelsea Community Chest United Fund drive opens, aiming at a goal of \$27,000.

5—Chelsea schools register an enrollment of 2,612.

5—Art Sias and several other area residents receive recognition at the county Awards and Recognition night in Ann Arbor.

8—Chelsea Jaycees battle stiff, brisk winds, as they prepare 1,250 chickens for their annual barbecue.

12—Chelsea merchants catch three juveniles in the act of shoplifting.

13—Chelsea High school Homecoming is capped with the crowning of Queen Connie Salyer, and a defeat at the hands of Novi's powerhouse.

14—Chelsea's debaters participate in their first meet of the season.

16—A three-member commission, appointed by the Probate Court, reverses its earlier decision, thus condemning a parcel of General Dwight Beach's land to Detroit Edison's right of eminent domain. The general has been fighting the passage of a powerline through his land since May 1970.

17—Chelsea Board of Education faces unfair labor charges at a public hearing.

20—Chelsea Bloodmobile visit, sponsored annually by the Com-

munity Chest, occasions a meager turnout which yields less than the amount of blood used by Chelsea already this year.

21—Betsy Belser brings home a first place trophy in the JV division, and accumulates the highest number of individual speaker points at a state wide debating tournament.

23—Chelsea High school hosts College and Career Night, gathering representatives from approximately 30 institutions.

26—Sessions with an impartial fact finder, appointed by the Michigan Employment Relations Commission, commence in hopes of resolving the differences between the Chelsea Education Association and the Chelsea School District.

29—North Lake United Methodist church realizes a 15-year-old dream with a consecration ceremony of their new education and fellowship building.

November . . .

1—Elaine Hartmann disappears.

3—Chelsea Bulldogs secure their third place position in the Southeastern Conference by inching by Milan, 19-13.

3—Near tragedy is averted at Beach school when Mrs. Marilyn Lopez barely misses being hit by a speeding car. Her estranged husband is arraigned on charges of felonious assault.

3—Jeffrey Flintoft loses his car to three juvenile car thieves.

7—Election results come in slowly, clearly pointing to a landslide for President Richard Nixon, but leaving many doubts as to the fate of local contestants.

10—A 14-year-old steals two cars, and 25 of her mother's checks, which she forges and tries to cash.

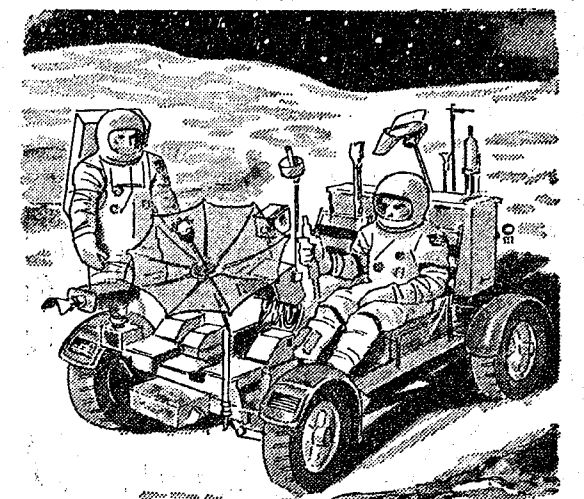
11—Gamble opens new addition

13—High school heroes are honored at the annual sports banquet, as the first snowfall of the season covers the streets.

13—Michigan State Lottery tickets go on sale.



JOHN W. LOTHROP, who will retire Jan. 1, came to Federal Screw Works Jan. 22, 1945, as a machine maintenance man, and slide scraper. He has held those positions ever since. Although he was born in Wapakoneta, O., he has resided in Grass Lake area these many years. Upon retirement, he plans a trip to Texas and California to escape the Michigan winter. He will then return to his Grass Lake home. He appears here (center) with his supervisor, Russell Bernath, (right) and Gene Hageman, left, vice-chairman of UAW Local 437.



GREATER GOALS in the NEW YEAR

May the coming quests be even more astounding! To one and all, many thanks.

A. D. Mayer Agency, Inc.
"Your Protection Is Our Business"

A Standard Want Ad will get you quick results!

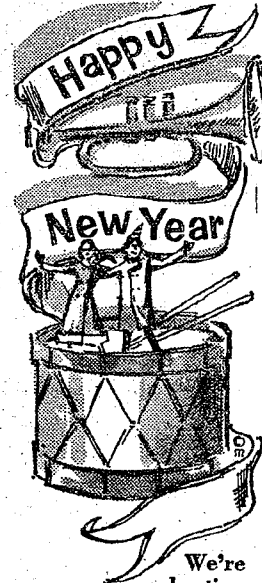


As people from all walks of life celebrate the New Year's happenings in our community . . . we extend gratitude to all our patrons.

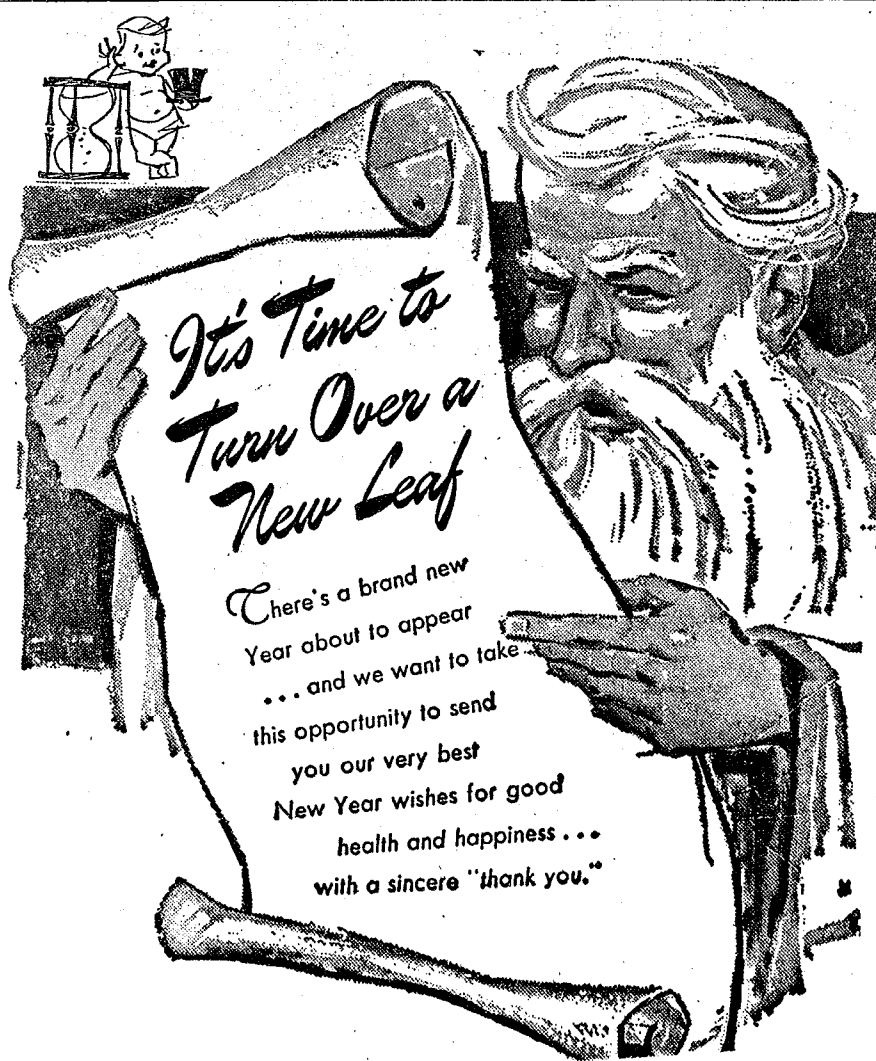
J & M OIL CO.
JERRY and MARKEITA



**BOLLINGER
SANITATION SERVICE**



We're beating our drums and calling out our thanks to everyone.
Heller Electric & Insulating



We Will Open Again Tuesday, Jan. 19

Schmum's Restaurant

BETTY and FRITZ & EMPLOYEES



Join the people you like so much and say hello to a sparkling New Year! To all our good patrons our fondest gratitude.

FLOYD D. ROWE & SON

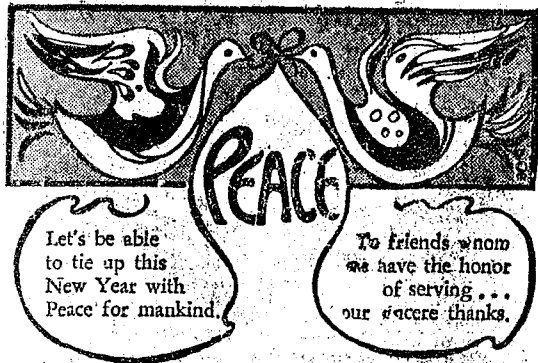
PLUMBING and HEATING
DUANE - DOUG - LES - JEFF - ROLAND



Good cheer, good health
good fortune to
all of our
friends in this fine
community. We
are proud to have
the opportunity
to serve you. Thanks!

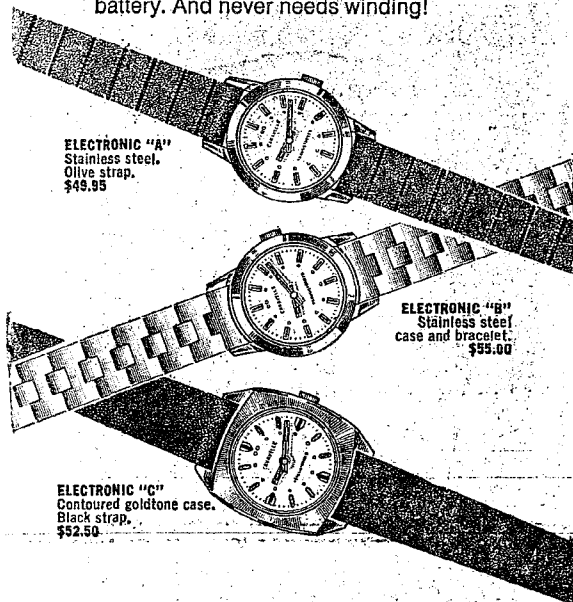
To All of You from All of Us at
LLOYD BRIDGES CHEVROLET
Have a Safe and Joyous Holiday!

John Gordon Heim of Grass was charged with possession of marijuana in addition to being held on a warrant issued in Washtenaw county. In the court of the arrest, police discovered that he had proved to be marijuana.



the new
CARAVELLE
Electronic
for Women
BY **BULOVA**

It takes a fully electronic watch to keep pace with her new life style. A watch that goes wherever she goes, good looking and trouble free. She can depend on her Caravelle Electronic by Bulova because it depends on a reliable little transistor, an ingenious bit of electronic circuitry and a tiny long-life battery. And never needs winding!



WINANS JEWELRY



MR. AND MRS. STANLEY MONTANGE, 19640 Ivey Rd., celebrated their 30th anniversary with a party Dec. 16 at the K. of C. Hall in Chelsea. The party was hosted by the couple's children, Mr. and Mrs. Ronald Montange of East Lansing, Gary, Kathy, and Mark Montange. Mr. Montange and the former Mary Elizabeth Nicholson were married Dec. 25, 1942, in St. Mary's church, Pinckney.

**Old Country Schools May
Have Been Best for Learning**

East Lansing—The old country school is back. It has been dressed up and given a fancy name, but underneath the trappings it's still the same.

More and more educators are beginning to think that maybe children learn better when they are not separated into classes only on the basis of age. Like the country school, children of different ages are sharing the same classrooms in more and more schools.

Individually Guided Education—that's what they're calling it now. The professionals have other fancy names for it, like differentiated staffing, open classrooms and multi-unit schools.

In laymen's language, teachers have begun grouping students according to their ability, not their ages. A child may be in one group for reading and another for arithmetic, for example. When he masters the skills of one group, he moves on to the next higher one. Through experience, teachers have found that an age spread of two or three years is best. That means that the traditional fourth, fifth and sixth grades now may be grouped into one class.

At a recent workshop at Michigan State University, Prof. Louis Romano explained to teachers and principals what Individually Guided Education is all about. Dr. Romano is a professor of administration and higher education at MSU.

According to Dr. Romano, it is now considered the fastest growing new form of education in the country. Some 500 schools adopted the approach this fall, bringing the total to 1,050.

Dr. Romano criticized the traditional school which fails a student, then puts him through exactly the same program again. It's no surprise, Dr. Romano says, that the student eventually drops out of school.

Under the new approach, the student progresses at his own speed, knows what his goal is for each step and can see his success.

**Christmas Seal
Receipts Drop
From Last Year**

Contributions in Washtenaw county to the Christmas Seal campaign of the Michigan Tuberculosis and Respiratory Disease Association totaled \$23,650 through mid-December compared with \$43,182 at the same time in 1971. The campaign goal for Michigan, excluding the Detroit area, is \$100,000. The Detroit area goal is \$1,000,000. The Michigan TB and Respiratory Disease Association, of Dec. 15, 72 percent of this goal had been reached.

"Traditionally, nearly 20 percent of our Christmas Seal income is received after Christmas," Dr. Meier said.

In addition to the work of the association on tuberculosis and other respiratory diseases, activities on antismoking and air conservation programs have increased the need for funds and led to the theme of the current campaign, "Give More to Christmas Seals... Christmas Seals Do More."

The association's antismoking emphasis this year has been placed on elementary school grades 4, 5 and 6, according to Dr. Meier. This age level was chosen because they identified it as the most critical in the decision-making process regarding smoking.

In addition, the association has sponsored a study of health education curriculum incorporating antismoking material in the K-12 activities of schools.

Air conservation efforts of the association have focused on passage of clean air laws in the state and on education of citizens to assume greater personal responsibility in achieving a goal of conserving quality air.



CLEMONS-SHORT: The engagement of Tonya Clemons to John F. Short has been announced by her parents, Mr. and Mrs. Roy Clemons, 12085 Jackson Rd., Dexter. Mr. Short is the son of Mr. and Mrs. Charles Short, 3594 Portage Lake Blvd., Pinckney. The bride-elect was graduated from Chelsea High school in 1971 and is employed by Ann Arbor Federal Savings. Her fiancé is a 1966 graduate of Dexter High school. He served for years in the Navy and is currently employed by Weber Auction Hall, Ypsilanti. No wedding date has been set.



TRAVIS-HUTCHISON: The engagement of Miss Ann Lander Travis to William F. Hutchison has been announced by the future bride's parents, Mr. and Mrs. William B. Travis of 16 Sycamore Dr. Miss Travis and her fiancé, the son of Mrs. Dorothy A. Hutchison of Elkhart, Ind., and Mr. Robert A. Hutchison of Portland, Ore., plan an Aug. 18 wedding. The bride-elect is a 1970 graduate of Chelsea High school. She is presently a senior at Olivet College, Olivet, where she is affiliated with Sorority Sorority. Miss Travis is employed by the college in their Residence Hall program. Mr. Hutchison was graduated from Elkhart High school, Elkhart, Ind., and Olivet College. He is currently employed by Kaiser Aluminum and Chemical Corporation in Elkhart, Ind.

**Club and Social
Activities**

The Senior Citizens Christmas and December birthday party pot-luck party at the Korner House was attended by 28 members Thursday, Dec. 21.

The table was centered with a birthday cake made by Mrs. Thelma Elsemann. Birthdays celebrated were those of Emma Seitz, Margaret Dietle, Mrs. Florence Merkel and Bernice Schneider.

A program of Christmas readings was prepared by Katharine Kusterer and was concluded with the exchanging of Christmas gifts.

The committee for the party included Mr. and Mrs. Norman Elsemann and Herman Eisele.

**Ten Persons Die in
School Bus Related
Accidents Last Year**

Ten persons, six of them under 20 years of age, were killed and 726 others were injured in 1,566 school bus and related type accidents in the Michigan 1971-72 school year, according to the State Police traffic division summary.

Compared with the record totals of the previous year, there were seven fewer deaths and three less injured but an increase of 251 in accidents for a new high.

Of the total accidents, deaths occurred in nine of them while 460 were classed as injury mishaps and 1,097 were catalogued as property damage only.

There were 927,707 students transported daily in 10,317 buses which traveled a total 89 million miles in 1971-72.

In the school year State Police officers inspected 11,091 buses, with centage of 89.

**Magic Mirror
Beauty Salon**

Open Tuesday thru Friday
9 a.m. to 9 p.m.
Saturday, 8 a.m. to 3 p.m.

PHONE 665-0816



**A
Prayer
for the New Year**

Let's make our New Year goal universal peace. To all our good patrons sincere words of thanks.

VILLAGE BEAUTY SALON

LORETTA and JERRY PANONE
Cindy - Eula - Janice - Cheryl - Carol



a bountiful New Year

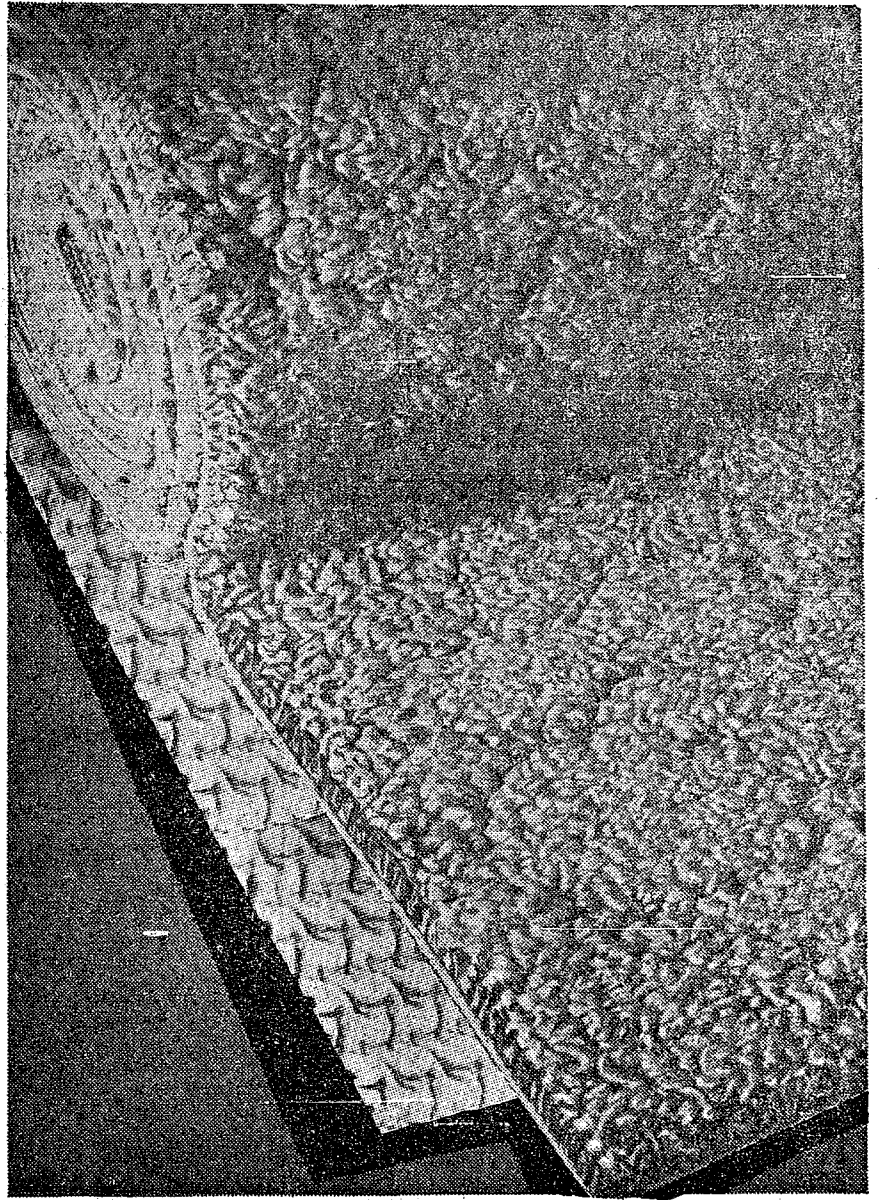
The year's taking its first run — hope it holds health, wealth, happiness. Bountiful thanks for your patronage.

Patty Ann Shoppe

Georgia - Cindy - Rena - Thelma

Want to sell a car? Try a Standard Want Ad!

CARPET SALE



LEES - DREAM ALONG - NYLON SPLUSH		Reg.	SALE
1 ROLL SLEEPY MOSS - 4812-1		\$9.95	\$5.95
1 ROLL TRANQUIL GOLD - 4812-19		\$9.95	\$5.95
1/2 ROLL LELADON MIST - 4812-24		\$9.95	\$5.95

LAURELCREST - IMPRESSIVE - HEAVY NYLON SPLUSH		Reg.	SALE
1 ROLL MAJESTIC RED		\$10.95	\$6.95
1 ROLL CHARTREUSE FLAIR		\$10.95	\$6.95
1 ROLL BRONZE LUSTRE		\$10.95	\$6.95

LAUREL CREST - SHAGALONG - NYLON SHAG		Reg.	SALE
1 ROLL CHATEAU GOLD		\$7.95	\$4.95
1 ROLL BRONZE LUSTRE		\$7.95	\$4.95

COMMERCIAL AGRILAN WITH RUBBER BACK (Good Quality)		Reg.	SALE
1 ROLL BEIGE TWEED		\$8.95	\$4.95

(SALE ENDS SATURDAY, JAN. 3)

MERKEL BROS.



HAPPY NEW YEAR

Celebrate...a New Year dawn! Gather with friends to welcome it. We're thankful for all you've done.

CHELSEA DRUG

and

CARD & GIFT SHOP

Dexter Township Zoning Ordinance Checked By County

The Washtenaw County Planning Commission is currently reviewing the proposed Dexter township zoning ordinance and will make its recommendations public at a meeting Jan. 3, says Washtenaw County Senior Planner Donald Pennington.

The meeting, which is open to the public, is scheduled for 7:30 p.m. in the third floor conference room of the CityCounty Building, Ann Arbor.

Pennington points out that the Planning Commission's recommendations are purely advisory.

Final decision in the adoption of the ordinance rests with the Dexter Township Board, which may or may not decide to adopt the recommendations of the Commission.

The Dexter township zoning or-

dinance came under some criticism during public hearings before the Dexter Zoning Board Nov. 27 and Dec. 4. Residents of the township requested clarification of portions of the ordinance and protested proposed changes in the zoning map which accompanies the ordinance.

"Winter is a wonderful season to take 'self-guided' nature hikes along the trails at Stony Creek Metropark near Utica. The nature study area is closed on Mondays (and Christmas Day), but trails and the Nature Center are open daily Tuesday through Sunday year-round.

The Nature Center at Kensington Metropark near Milford will be closed on Christmas Day.

Taxpayers Offered Help With Returns

Taxpayers in the Ann Arbor area may obtain assistance with their 1972 Federal income tax returns Monday through Friday each week at the IRS office here starting Jan. 2, LeRoy Willis local District Director's Representative, said today.

Internal Revenue Service personnel will be available to provide Federal income tax information from 8 a.m. to 4 p.m. The Ann Arbor office is located at 3434 Washtenaw Ave.

Willis suggested that many taxpayers will be able to obtain answers to their questions by phone. The assistance phone number in Ann Arbor is 971-0370.

In announcing taxpayer service days, Willis noted that many taxpayers will be able to use the new "short form" 1040A, which the IRS reintroduced this year. The IRS estimated that about 30 million taxpayers will be able to use the half-page form.

Taxpayers using the Form 1040 should also find their returns easier to prepare due to the more simplified language used in the instructions this year, Willis said. He also reminded taxpayers that the IRS may be able to compute the tax for individuals if they make less than \$20,000, take the standard deduction, and fill in certain portions of the return. The information required is explained in the Form 1040 and 1040A instruction booklets.

Willis reminded taxpayers who plan to pay someone to prepare their return that the law requires the person to sign the form as a preparer, Willis said.

Taxpayers who pay to have their returns prepared should be careful to select a qualified preparer, Willis said.

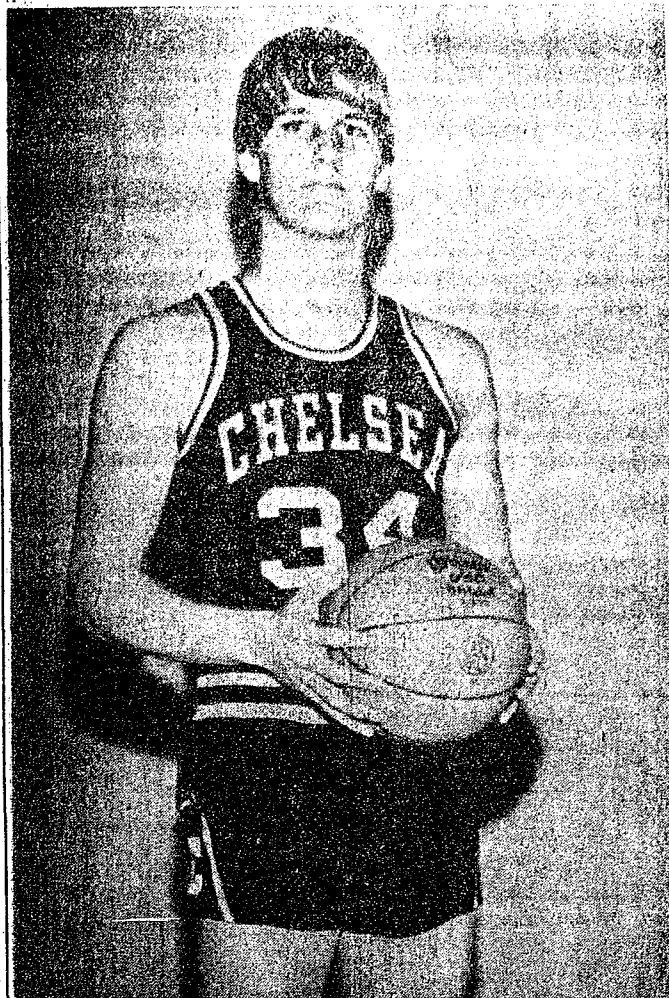
Servicemen's Corner

Pfc. Robert Salyer In Communications At Camp in Germany

Darmstadt, Germany — Army Private First Class Robert A. Salyer, 19, son of Mrs. Roma V. Salyer, 227 Jefferson St., Chelsea, Mich., is serving with the 54th Engineer Battalion at Darmstadt, Germany.

Pfc. Salyer is a communications specialist in the battalion's Company C. He entered the army in January, received basic training at Ft. Knox, Ky., and was last stationed at Ft. Gordon, Ga. The private is a 1971 graduate of Chelsea High school.

Cager of the Week



JEFF DANIELS (34) is back in action, which must mean perpetual motion 24 hours a day to do all he does. He was sidelined for football season with a recurring injury, but now he is one of the consistent starters on the basketball team, and soon will be one of the leads in "Oliver!" If Jeff were struck down with an injury again, it would be the stay in the hospital, rather than the pain, he would most dislike. As Fagin, leader of cockney thieves in the school musical, Jeff will be continuing his career on the stage. He was Big Bill in "Guys and Dolls" a year ago, and a sailor in South Pacific. Jeff obviously has a soft spot in his athletic heart for musicals. "Fiddler on the Roof" is ranked as one of his favorite movies, along with "What's Up Doc," and "Clockwork Orange." Jeff's singing ability makes him a member of the Madrigals and allows him to enjoy chorus more than any other class. Yet, it is another of the arts, literature, that will claim Jeff's concentration at Central Michigan University. He plans to major in English and become a teacher. There are other doors open to this versatile lad, including cartooning, which he does as a hobby, and cookie-making. Jeff claims to have a secret, self-discovered butternut cookie recipe that can't be topped. Food, glorious food!

Tip Over Sour Cream

Refrigerate sour cream upside-down, advises Michigan State University Marketing Specialist Maryann Beckman.

Storing the product in an inverted, tightly-closed container insures fresh flavor and smooth texture by keeping air out.

Sour cream keeps well for about two weeks. Never freeze sour cream because it separates when thawed.



Joy to All
in the
New Year

This little tune is to
say hope the year is
best in every way.
Many thanks to you,

AL NALLI
MUSIC

AL - VIRGINIA

Paralegic Veterans Receive Better Care, Prolonging Lives

Improvements in the care of paralyzed persons have given paraplegic veterans from the Korean Conflict era a much longer life span than those from World War II. A study made at the VA hospital in Richmond, Va., shows that 75 percent of the 100 Korea paraplegics studied are alive 19 years later. In the World War II group, only half survived that long. Only 10 percent of the original 170 in the World War II study, begun in 1949, are still living. Kidney disease is the most frequent cause of death, although during the past five years death from heart attack has been as frequent as from kidney disease.

Wives, widows and children of veterans who are eligible for VA educational assistance may now take on-the-job training or apprenticeships in lieu of going to college. Allowances for this type of training have been increased by nearly 48 percent in the broadened GI Bill provisions signed into law in October. Correspondence course training has also become available to these dependents.



Glad
New Year
Greetings

It's time to ring out our wishes
for health, wealth and happiness for
specially nice friends and customers.

FOSTER'S MEN'S WEAR

BOB - DAVE

PRE-INVENTORY CLEARANCE SALE

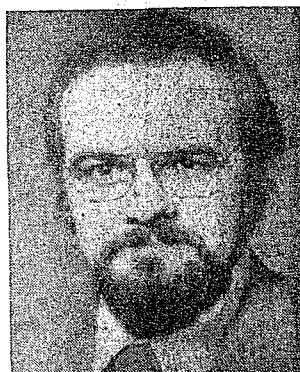
Buy Now and Save on What's Left!

SLEDS - TOBOGGANS - CHRISTMAS TREE LIGHTS
PYREXWARE - DISH SETS - TABLE APPLIANCES
HAIR DRYERS and CULERS

CHELSEA HARDWARE



Farm Bureau Insurance Group has all kinds of insurance — for everyone. But most people don't know that. • We can insure your car, home, business and your family's future — just about everything you need. All with the savings and convenience of one agent, one company. • Would you help spread the word?



DAVE ROWE
475-8065



DOUG ROBESON
475-7389

FARM BUREAU
INSURANCE
GROUP TM

Farm Bureau Mutual • Farm Bureau Life
Community Service Insurance • Community Service Acceptance



LOOK
TO THE
FUTURE

Ring out the old; ring in the new!
And may the New Year be happy, peace-
ful and prosperous for all of our loyal
customers. We appreciate your patronage.

Village Motor Sales, Inc.

TOM and JEANNE STOCK

Mary - Bob - Harold - Bill - Al - Don - Ed - Tom B. - Jim - George
Mark - Chief - Tom S. - Don - John



To you, friends and patrons, we extend our best
wishes for a New Year filled with
happiness, health and prosperity. We
also wish to express our
sincere appreciation for
the pleasure of serving you.

CHELSEA STATE BANK